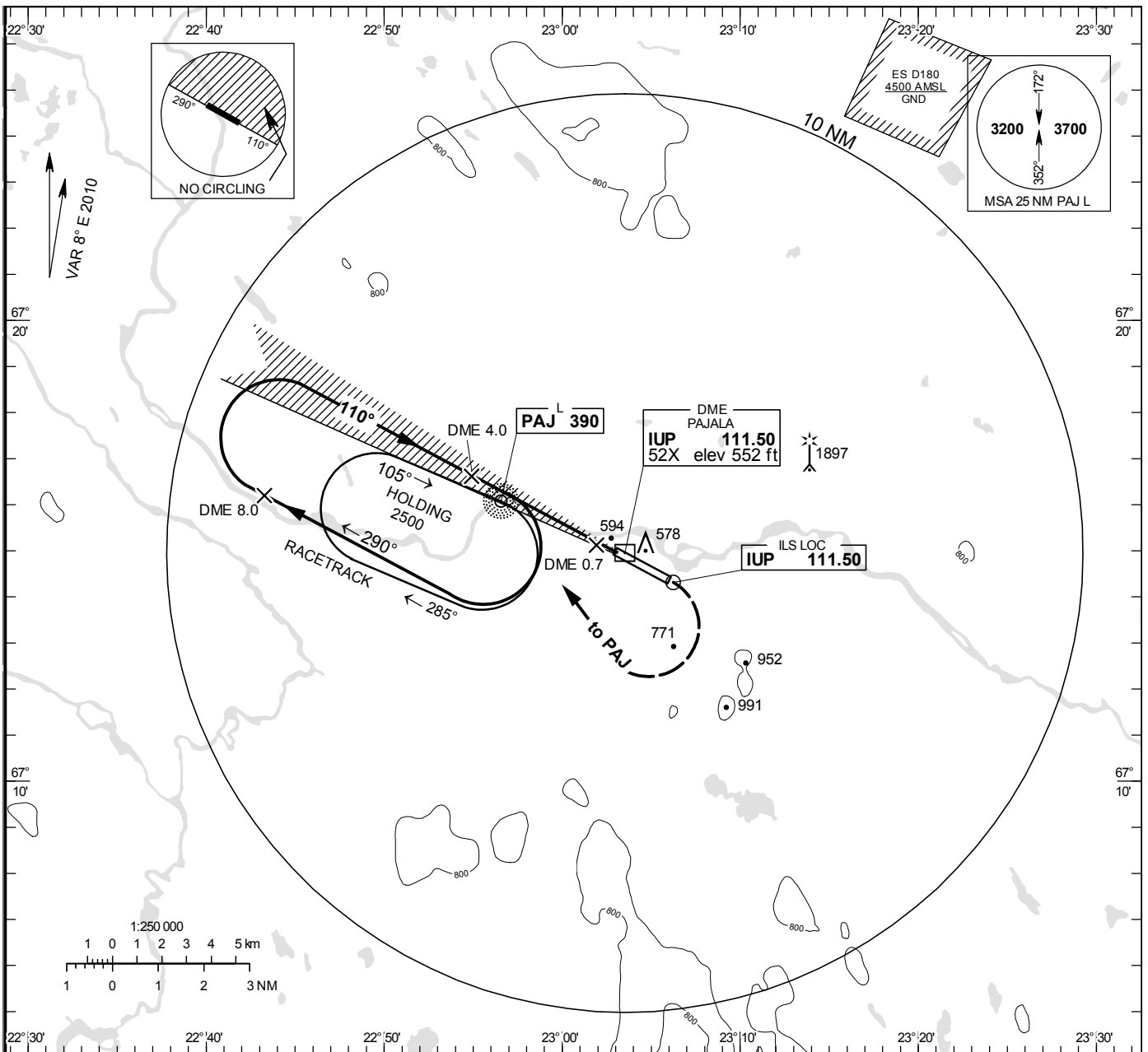


**INSTRUMENT APPROACH CHART – ICAO**

**THR ELEV 540.5 ft, AD ELEV 542 ft**  
 OCH are related to THR.  
 Circling OCH are related to AD ELEV.  
 BRG are MAG  
 ALT. HGT and ELEV in ft.

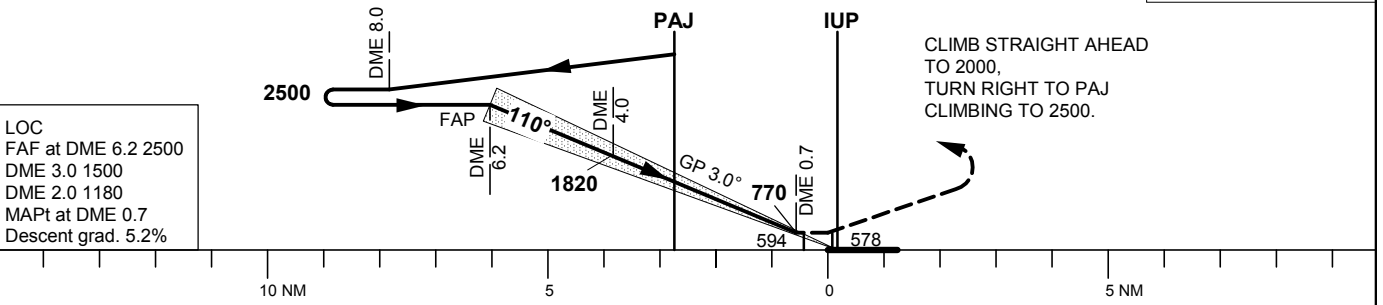
PAJALA INFORMATION 118.380

**NDB + DME + ILS RWY 11 PAJALA**



TA 5000 ft AMSL RDH 50.9 ft \*Timing not authorized for defining the MAPt

OM replaced by DME 4.0  
 MM replaced by DME 0.7



LOC  
 FAF at DME 6.2 2500  
 DME 3.0 1500  
 DME 2.0 1180  
 MAPt at DME 0.7  
 Descent grad. 5.2%

OCA (H)					Final approach	LOC Distance FAF-MAPt 5.5 NM*							
Cat of ACFT	A	B	C	D	DME NM	6	5	4	3	2			
Straight-in Approach	CAT I	691(151)	701(161)	711(171)	724(184)	ALT	2460	2140	1820	1500	1180		
	LOC	840(300)				GS	kt	80	100	120	140	160	180
Circling SW RWY		1070(530)	1250(710)	1390(850)	1390(850)	Rate of descent	ft/min	425	535	640	745	850	960