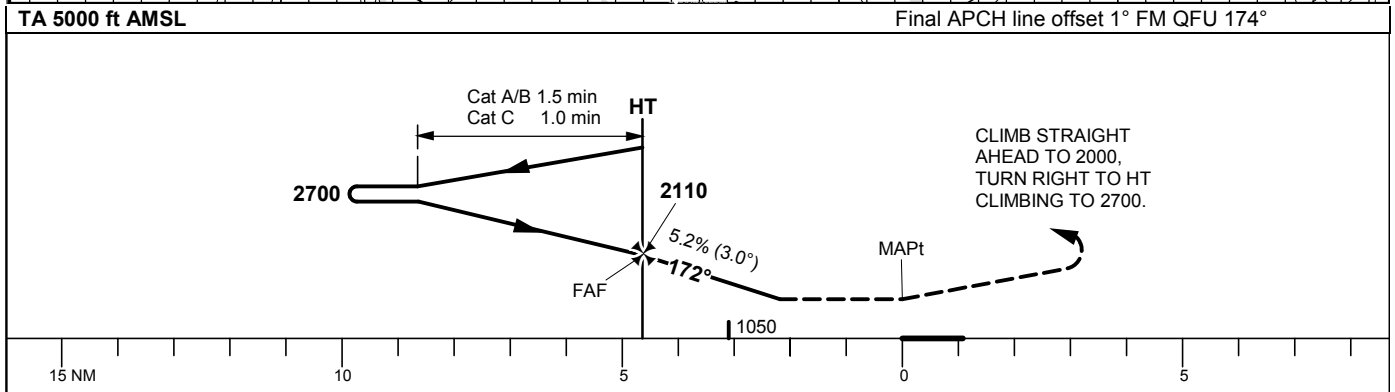
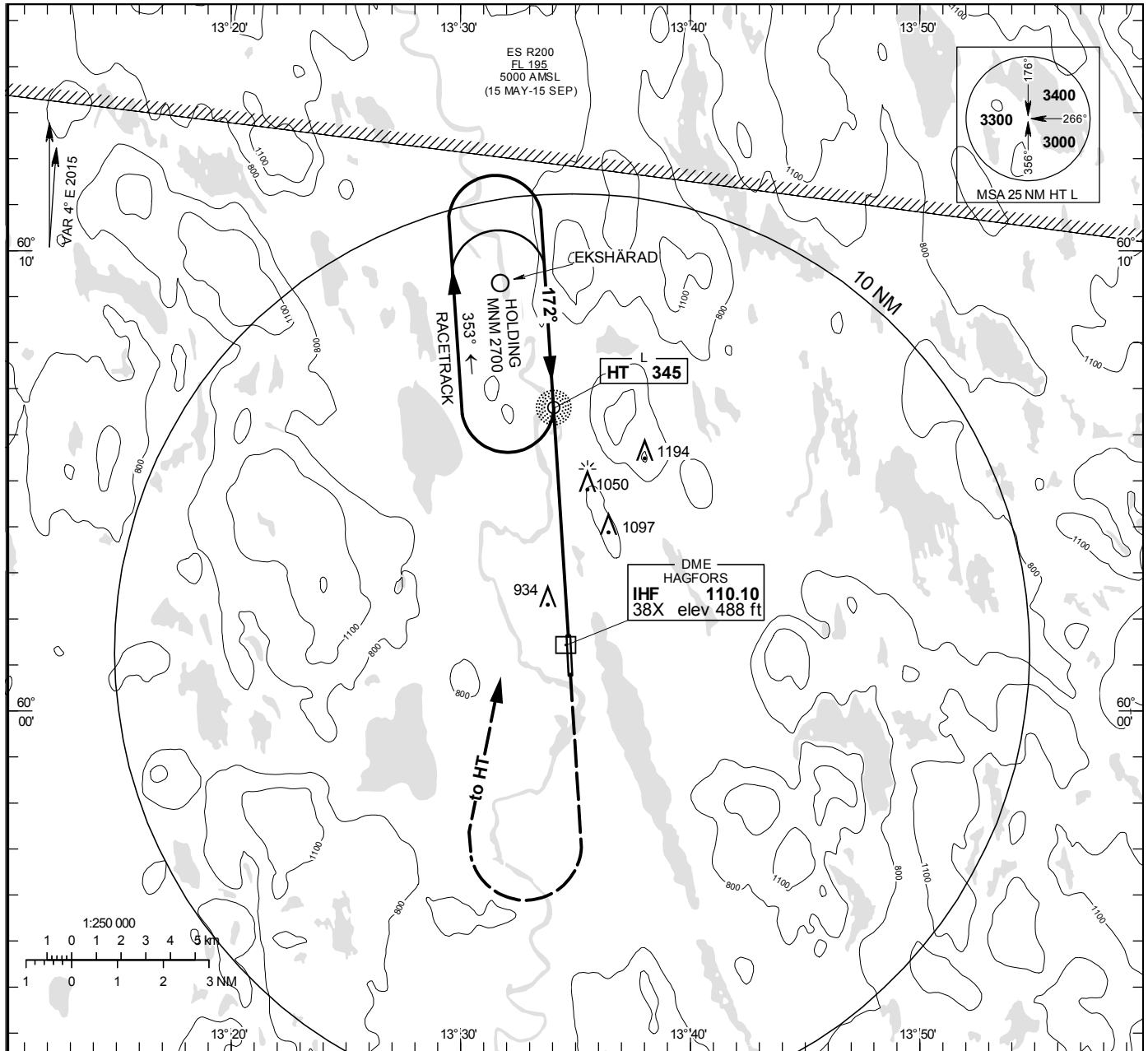


**NDB RWY 18**  
**HAGFORS**

HAGFORS  
INFORMATION 122.230

**THR ELEV 474.3 ft, AD ELEV 474 ft**  
OCH are related to THR.  
Circling OCH are related to AD ELEV.  
BRG are MAG  
ALT. HGT and ELEV in ft.

**INSTRUMENT  
APPROACH  
CHART – ICAO**



OCA (H)			Final approach							
Cat of ACFT	A	B	C	DME IHF NM	Distance FAF-MAPt 5.0 NM					
Straight-in Approach	1300(830)			5	4	3				
Circling	1230 (760)	1400 (930)	1590(1120)	2060	1750	1430				
				GS	80	100	120	140	160	
				Time	min:s	3:45	3:00	2:30	2:08	1:52
				Rate of descent	ft/min	425	535	640	745	850