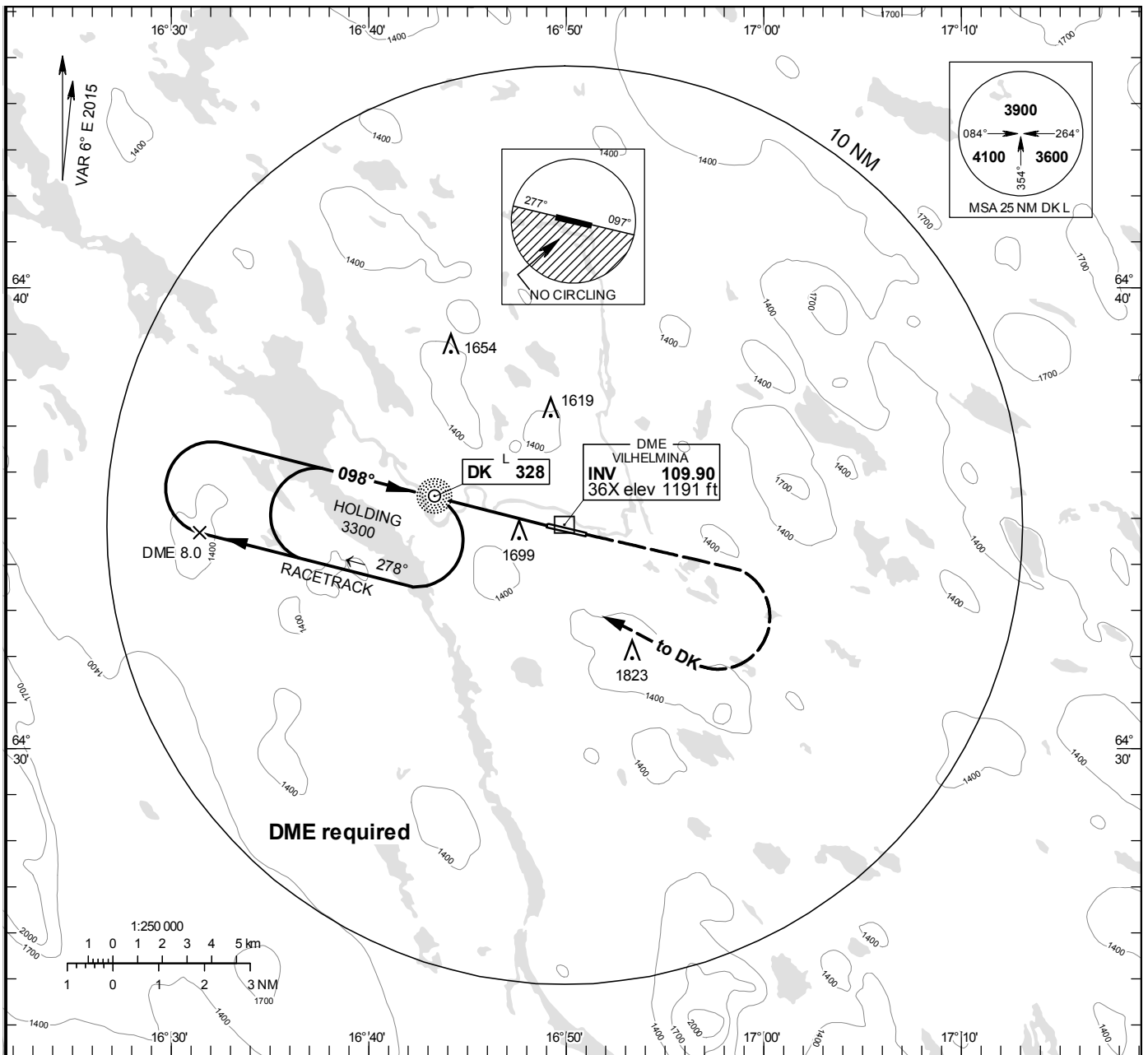


**INSTRUMENT APPROACH CHART – ICAO**

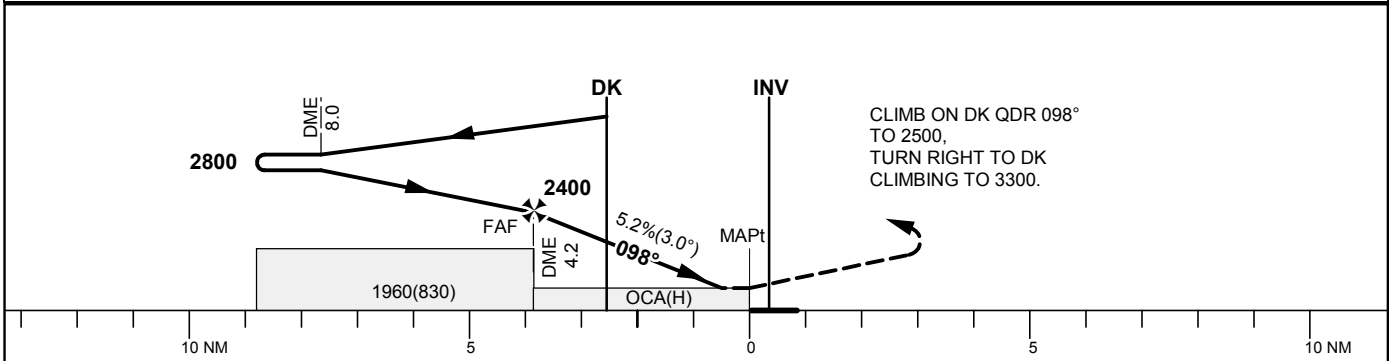
**THR ELEV 1138 ft, AD ELEV 1140 ft**  
 OCH are related to THR.  
 Circling OCH are related to AD ELEV.  
 BRG are MAG  
 ALT, HGT and ELEV in ft.

VILHELMINA INFORMATION 122.555

**NDB RWY 10 VILHELMINA**



TA 5000 ft AMSL Max speed within Racetrack 200 kt IAS Procedure 1° offset



OCA (H)			Final approach	Distance FAF-MAPt 3.9 NM							
Cat of ACFT	A	B	C	DME INV NM							
Straight-in Approach		1860(730)		4							
Circling N RWY	1860(720)	1920(780)	2050(910)	3							
				2360							
				kt	80	100	120	140	160	180	
				Time	min:s	2:54	2:19	1:56	1:39	1:27	1:17
				Rate of descent	ft/min	425	535	640	745	850	960