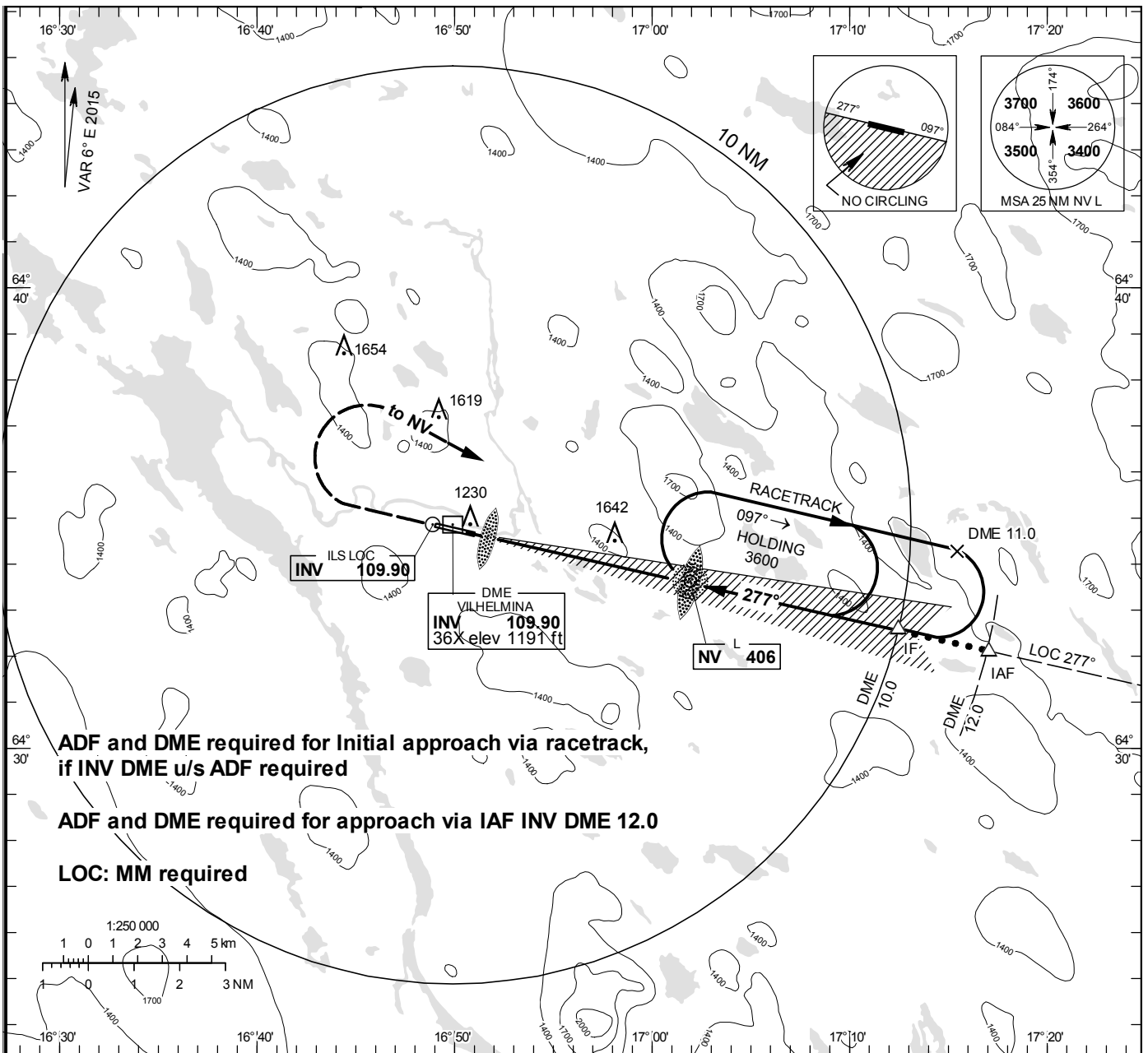


INSTRUMENT APPROACH CHART – ICAO

THR ELEV 1138.1 ft, AD ELEV 1140 ft
 OCH are related to THR.
 Circling OCH are related to AD ELEV.
 BRG are MAG
 ALT, HGT and ELEV in ft.

VILHELMINA INFORMATION 122.555

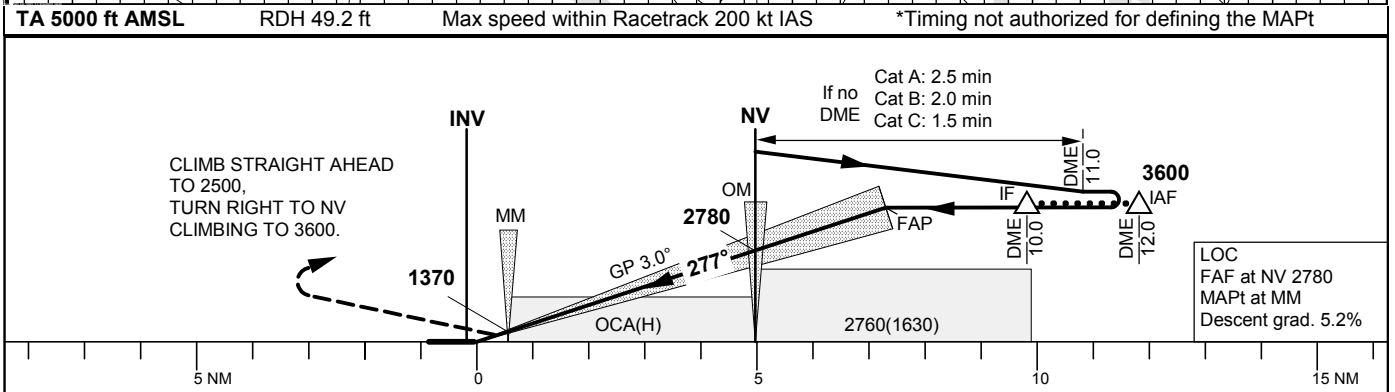
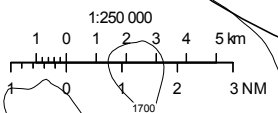
ILS or LOC RWY 28 VILHELMINA



ADF and DME required for Initial approach via racetrack, if INV DME u/s ADF required

ADF and DME required for approach via IAF INV DME 12.0

LOC: MM required



Cat of ACFT	OCA (H)			Final approach	LOC Distance FAF-MAPt 4.4 NM*						
	A	B	C		DME INV NM	5	4	3			
Straight-in Approach	CAT I	1337(199)	1345(207)	1355(217)	2680	2360	2040				
	LOC	1890(750)	1890(760)	2050(910)	kt	80	100	120	140	160	
Circling N RWY		1890(750)	1920(780)	2050(910)	Time	min:s	3:19	2:39	2:13	1:54	1:40
					Rate of descent	ft/min	425	535	640	745	850