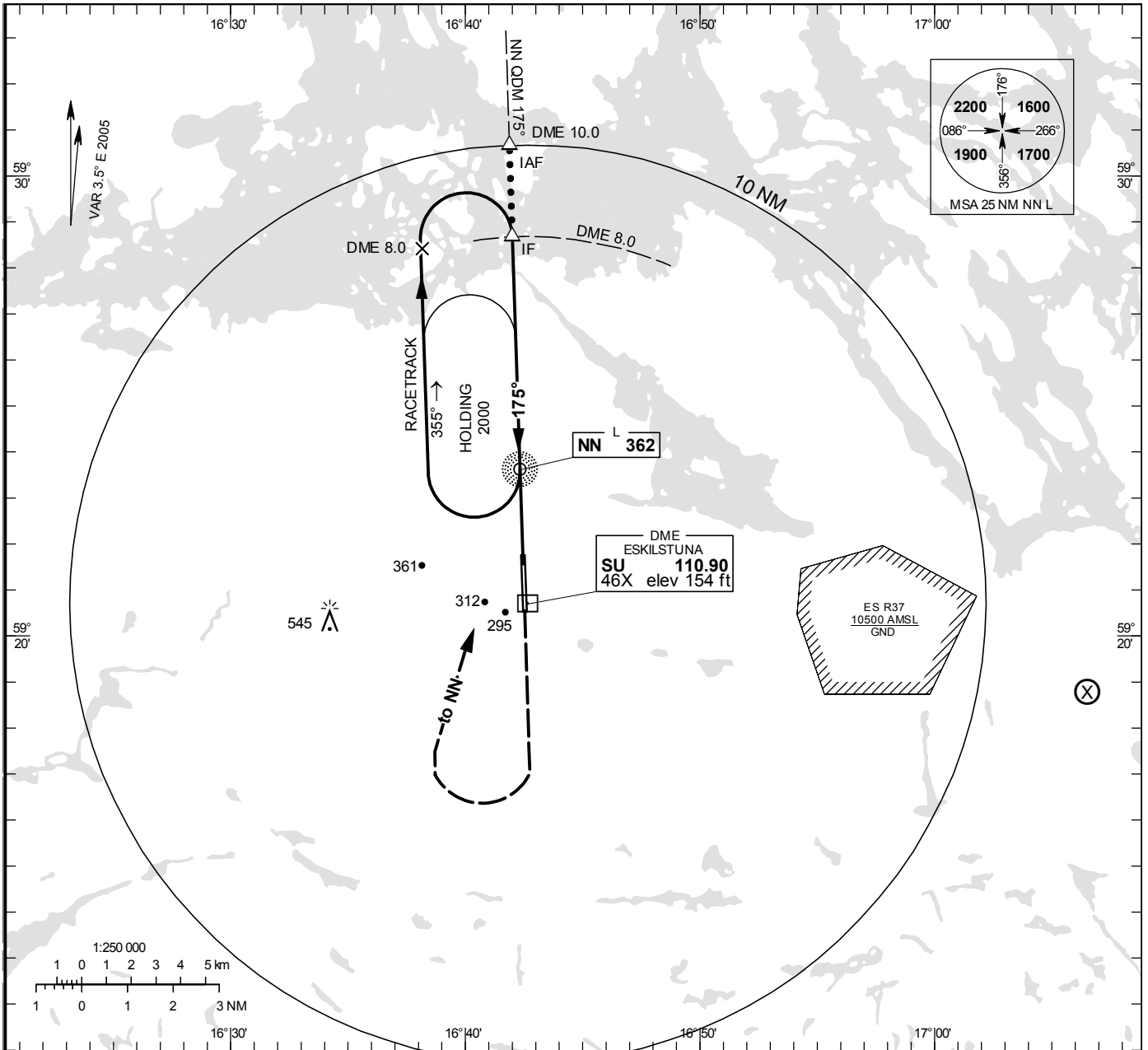


INSTRUMENT APPROACH CHART – ICAO

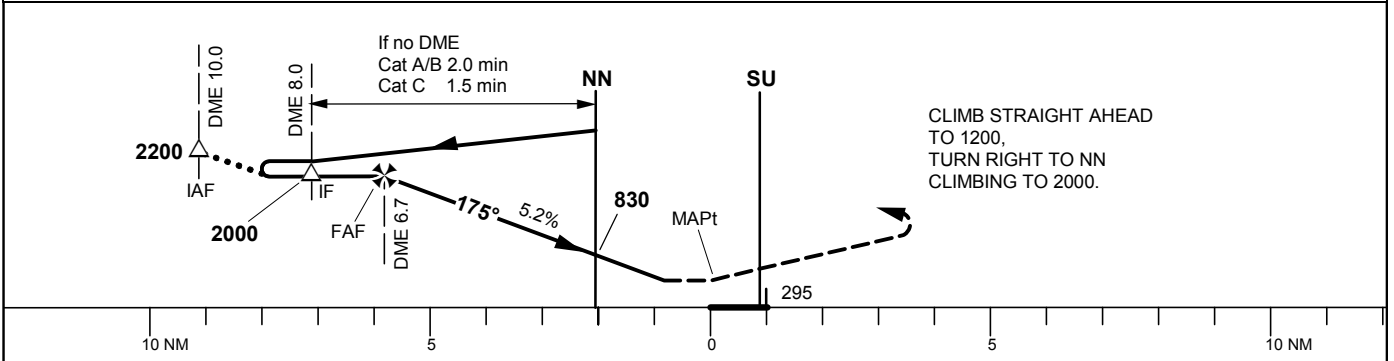
THR ELEV 129 ft, AD ELEV 140 ft
 OCH are related to THR.
 Circling OCH are related to AD ELEV.
 BRG are MAG
 ALT. HGT and ELEV in ft.

ESKILSTUNA INFORMATION 126.855

NDB + DME RWY 18 ESKILSTUNA



TA 5000 ft AMSL



OCA (H)				Final approach Distance FAF-MAPt 5.8 NM							
Cat of ACFT	A	B	C	GS	kt	80	100	120	140	160	180
Straight-in Approach	550(430)			Time	min:s	3:22	2:41	2:14	1:55	1:41	1:30
Circling	610(480)	660(530)	1030(900)	Rate of descent	ft/min	425	530	635	745	850	955

If no DME FAF at NN 830(710)
 Descent grad 5.2%
 OCA (H) 550(430)