

**VISUAL APPROACH CHART - ICAO**

1:250000  
1 0 1 2 3 4 5 km  
1 0 1 2 3 NM

**AD ELEV 474 FEET**

ELEV and ALT in ft  
HGT in ft above AD ELEV

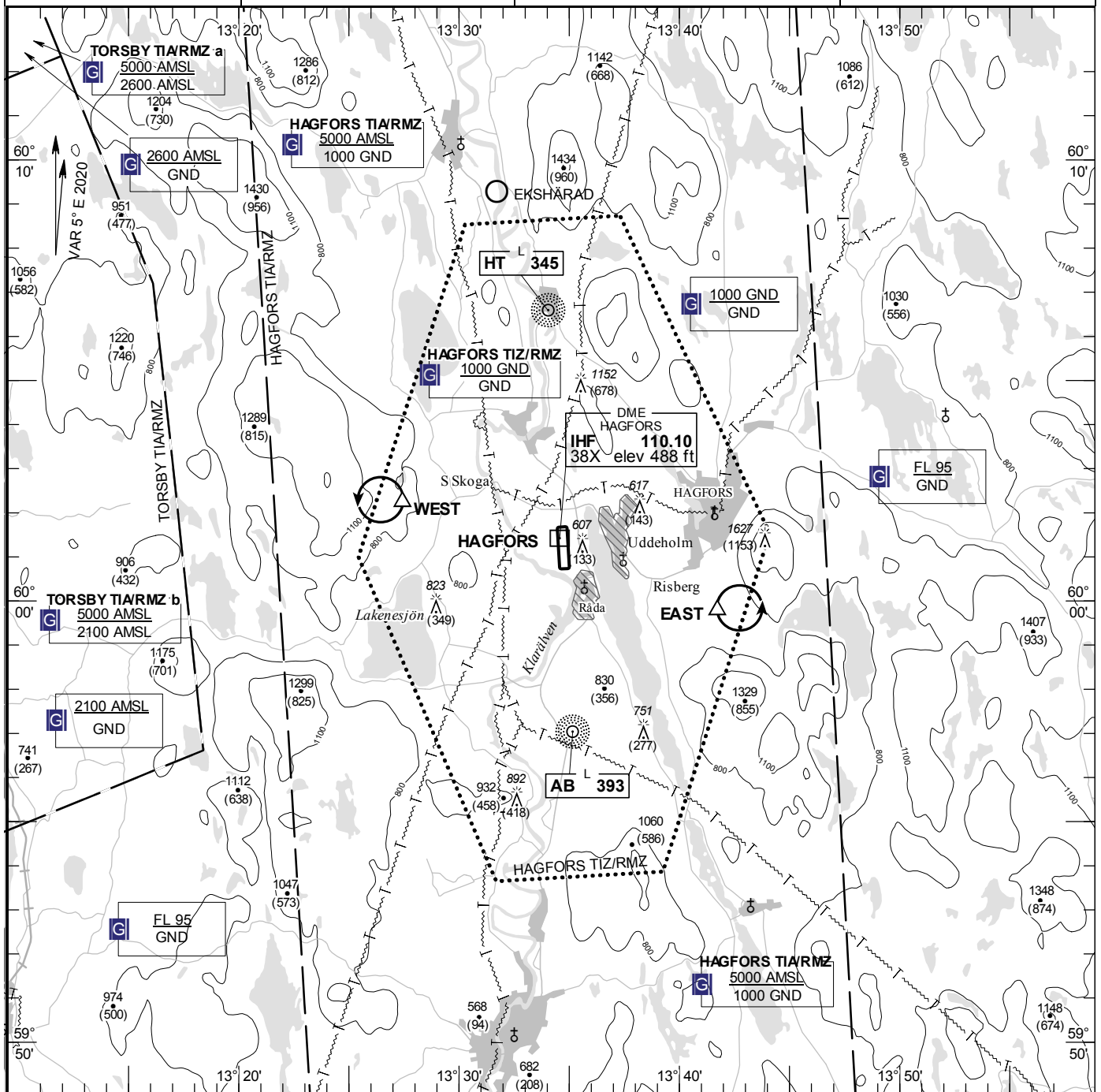
**TA 5000 AMSL**

**HAGFORS INFORMATION**

**122.230**

**AD 2 ESOH 6-1**

**HAGFORS SWEDEN**



**Communication failure**

NIL

**Remark**

Note: Overflight of Råda (SE end RWY 18) and Uddeholm should be avoided.

RWY NR	THR ELEV	PAPI (MEHT)
18	474.3 ft	Left/3.00° (50 ft)
36	469 ft	Left/3.00° (22 ft)

**Legend**  
See GEN 2.3

**Entry / exit point**

NIL

**Holding**

**EAST:** Hold south of Hagfors and east of Risberg, east of point 595947N 0134144E  
**WEST:** Hold north of lake Lakenesjön and west of road intersection at Södra Skoga, west of point 600216N 0132727E