

**VISUAL APPROACH CHART - ICAO**

1:250000



**AD ELEV 610 FEET**

ELEV and ALT in ft  
HGT in ft above AD ELEV

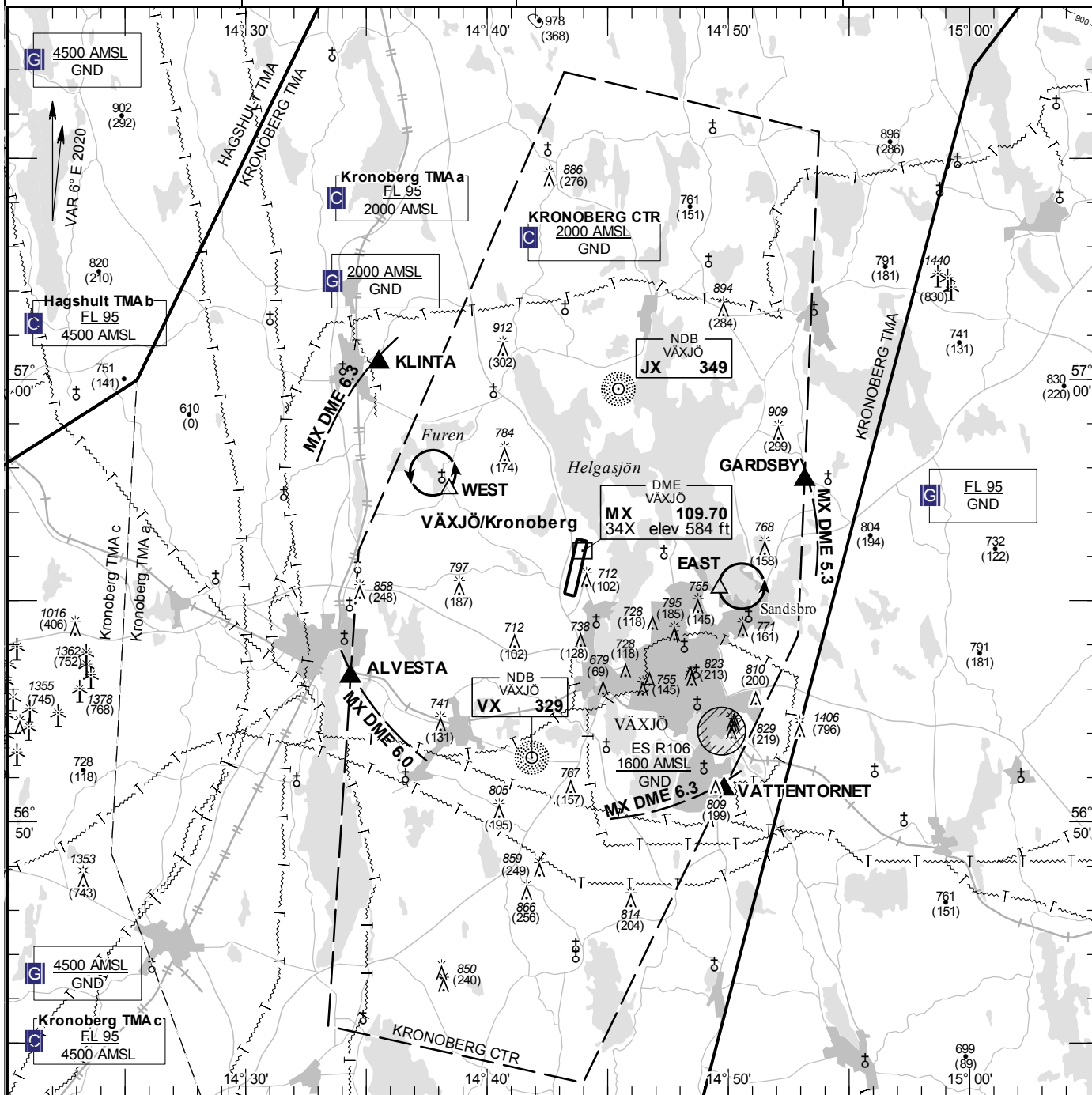
**TA 5000 AMSL**

**KRONOBERG TOWER**

**118.155**

**AD 2 ESMX 6-1**

**VÄXJÖ/Kronoberg SWEDEN**



**Communication failure**

- 1 SQUAWK 7600
- 2 Enter CTR via GARDSBY – Holding EAST or via KLINTA – Holding WEST at or below 1600 ft AMSL to traffic circuit. Transmit blind your intentions.
- 3 Flash LDG-lights and watch TWR for optical signals.

RWY NR	THR ELEV	PAPI (MEHT)
01	610 ft	Left/3.00° (45 ft)
19	563.2 ft	Left/2.86° (59 ft)

**Entry / exit point**

KLINTA	570022N 0143531E
GARDSBY	565743N 0145310E
VÄTENTORNET	565043N 0144949E
ALVESTA	565316N 0143420E

**Legend**

See GEN 2.3

**Holding**

- EAST:** Hold at the creek north west SANDSBRO, east of point 565516N 0144938E
- WEST:** Hold at HÄRLÖV south of lake FUREN, north west of point 565730N 0143825E

**Remark**

Right hand traffic circuit when RWY 19 is in use.