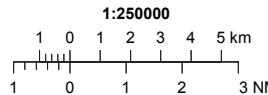


**VISUAL APPROACH CHART - ICAO**



**AD ELEV 59 FEET**

ELEV and ALT in ft  
HGT in ft above AD ELEV

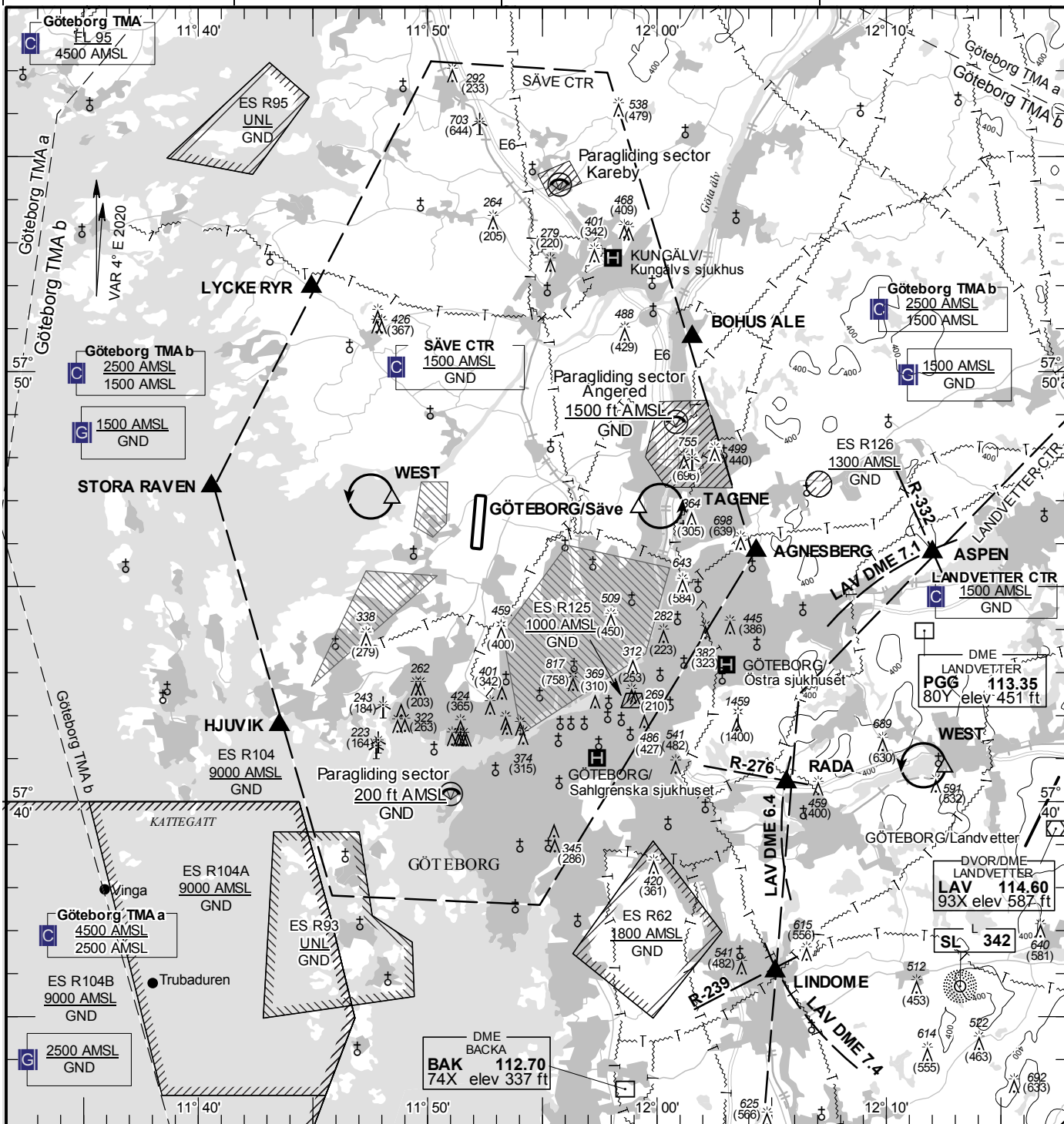
**TA 5000 AMSL**

**SÄVE TOWER**

**119.055**

**AD 2 ESGP 6-1**

**GÖTEBORG/Säve  
SWEDEN**



**Communication failure**

- 1 SQUAWK 7600
- 2 Enter CTR via AGNESBERG - Holding TAGENE or via STORA RAVEN – Holding WEST at or below 1500 ft AMSL to join traffic circuit.  
Transmit blind your intentions.
- 3 Flash LDG-lights and watch TWR for optical signals.

**Remark**

Obstacle below 197 ft AGL not shown in CTR.  
Noise sensitive area, to be avoided.

RWY	THR	PAPI
NR	ELEV	(MEHT)
01	51 ft	NIL
19	48 ft	NIL

**Legend**  
See GEN 2.3

**Entry / exit point**

LYCKE RYR	575157N 0114456E
BOHUS ALE	575047N 0120132E
AGNESBERG	574549N 0120419E
HJUVIK	574146N 0114332E
STORA RAVEN	574719N 0114034E

**Holding**

TAGENE:	Hold over gravel pit east of point 574649N 0115912E
WEST:	Hold west of Nolvik over the sea, west of point 574702N 0114826E