

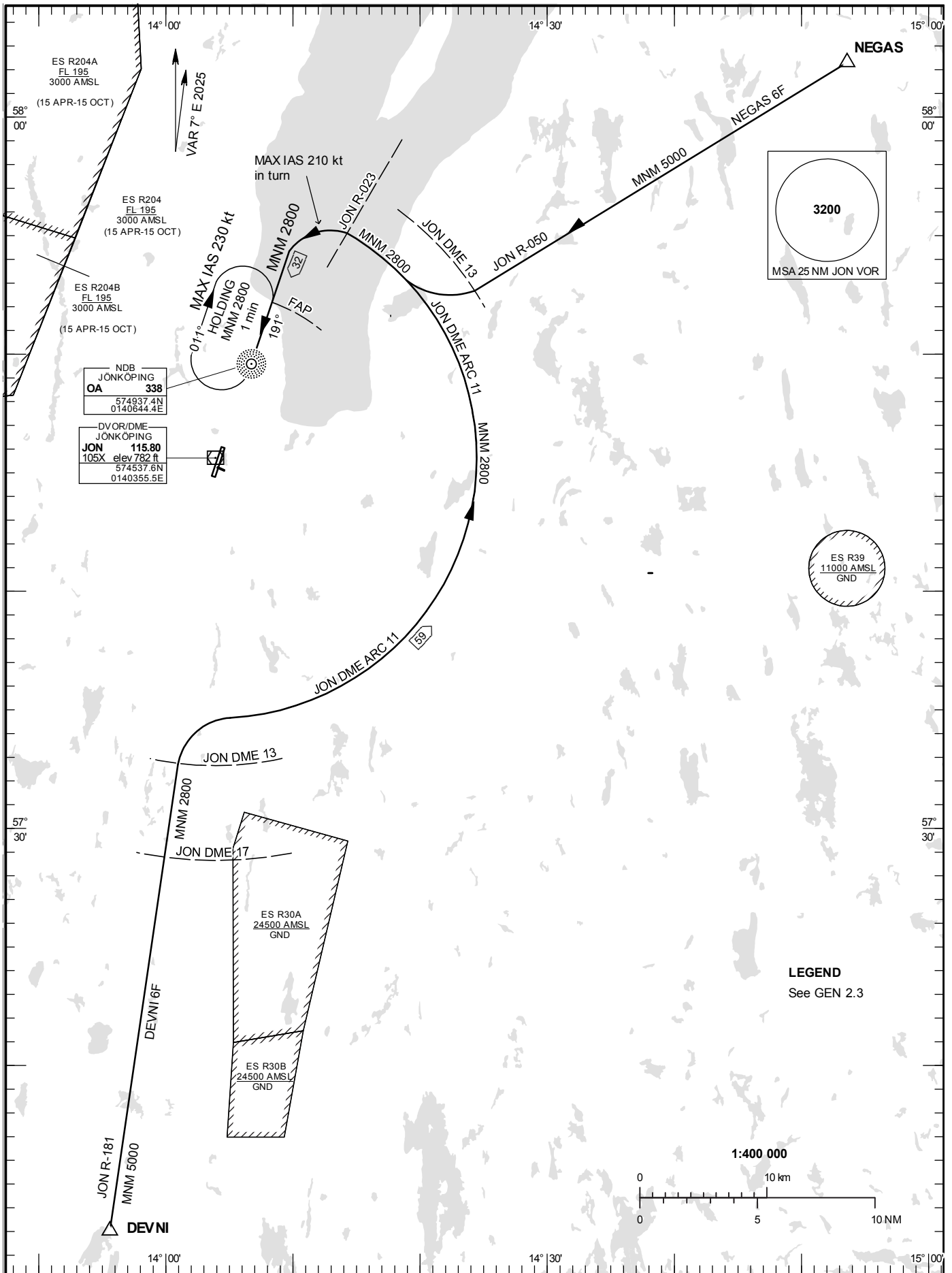
STANDARD INSTRUMENT  
ARRIVAL CHART (STAR) -  
ICAO

HGT and ALT in ft  
BRG are MAG  
TA 5000 ft AMSL

JÖNKÖPING TOWER 118.255

RWY 19

DEVNI 6F, NEGAS 6F



## ARRIVAL (STAR) RWY 19

### REMARK

Descent to minimum altitude for an arrival route must not be initiated until an ATC clearance to this altitude or an approach clearance has been received.

### DEVNI SIX FOXTROT ARRIVAL (DEVNI 6F)

At DEVNI intercept JON R-181, not below 5000 ft until JON DME 17. At JON DME 13 turn right and proceed on JON DME ARC 11, not below 2800 ft. At JON R-023 turn left to intercept LOC SJ, not below 2800 ft until FAP.

### NEGAS SIX FOXTROT ARRIVAL (NEGAS 6F)

At NEGAS intercept JON R-050, and proceed to JON DME 13, not below 5000 ft. Turn right and intercept JON DME ARC 11, not below 2800 ft. At JON R-023 turn left to intercept LOC SJ, not below 2800 ft until FAP.