

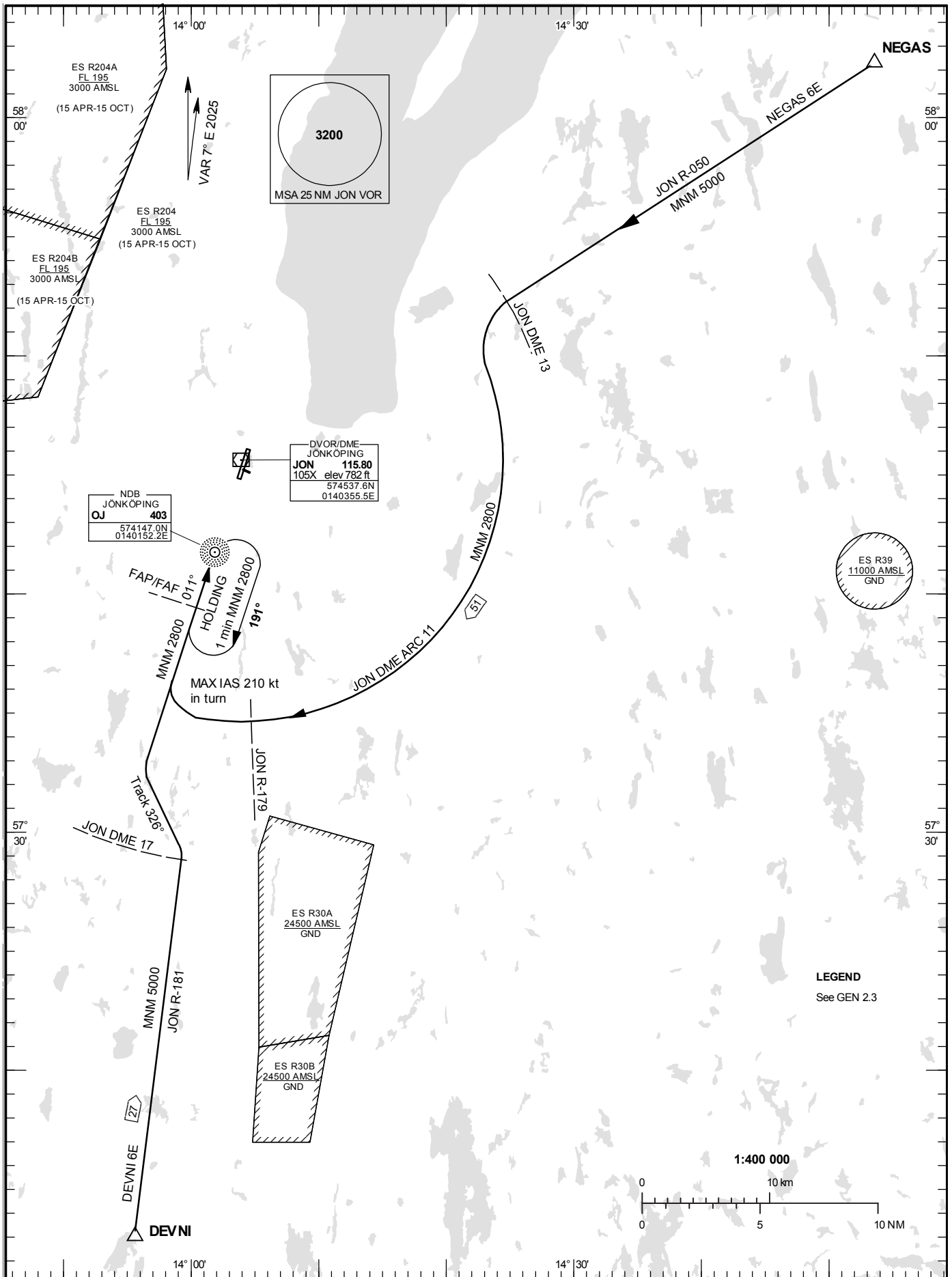
STANDARD INSTRUMENT
ARRIVAL CHART (STAR) -
ICAO

HGT and ALT in ft
BRG are MAG
TA 5000 ft AMSL

JÖNKÖPING TOWER 118.255

RWY 01

DEVNI 6E, NEGAS 6E



ARRIVAL (STAR) RWY 01

REMARK

Descent to minimum altitude for an arrival route must not be initiated until an ATC clearance to this altitude or an approach clearance has been received.

DEVNI SIX ECHO ARRIVAL (DEVNI 6E)

At DEVNI intercept JON R-181, not below 5000 ft until JON DME 17. At JON DME 17 turn left to track 326° to intercept LOC SGJ, not below 2800 ft until FAP/FAF.

NEGAS SIX ECHO ARRIVAL (NEGAS 6E)

After NEGAS intercept JON R-050 and proceed to JON DME 13, not below 5000 ft. Turn left and proceed on JON DME ARC 11, not below 2800 ft.
At JON R-179 turn right (MAX IAS 210 kt in turn) to intercept LOC SGJ, not below 2800 ft until FAF/FAF.