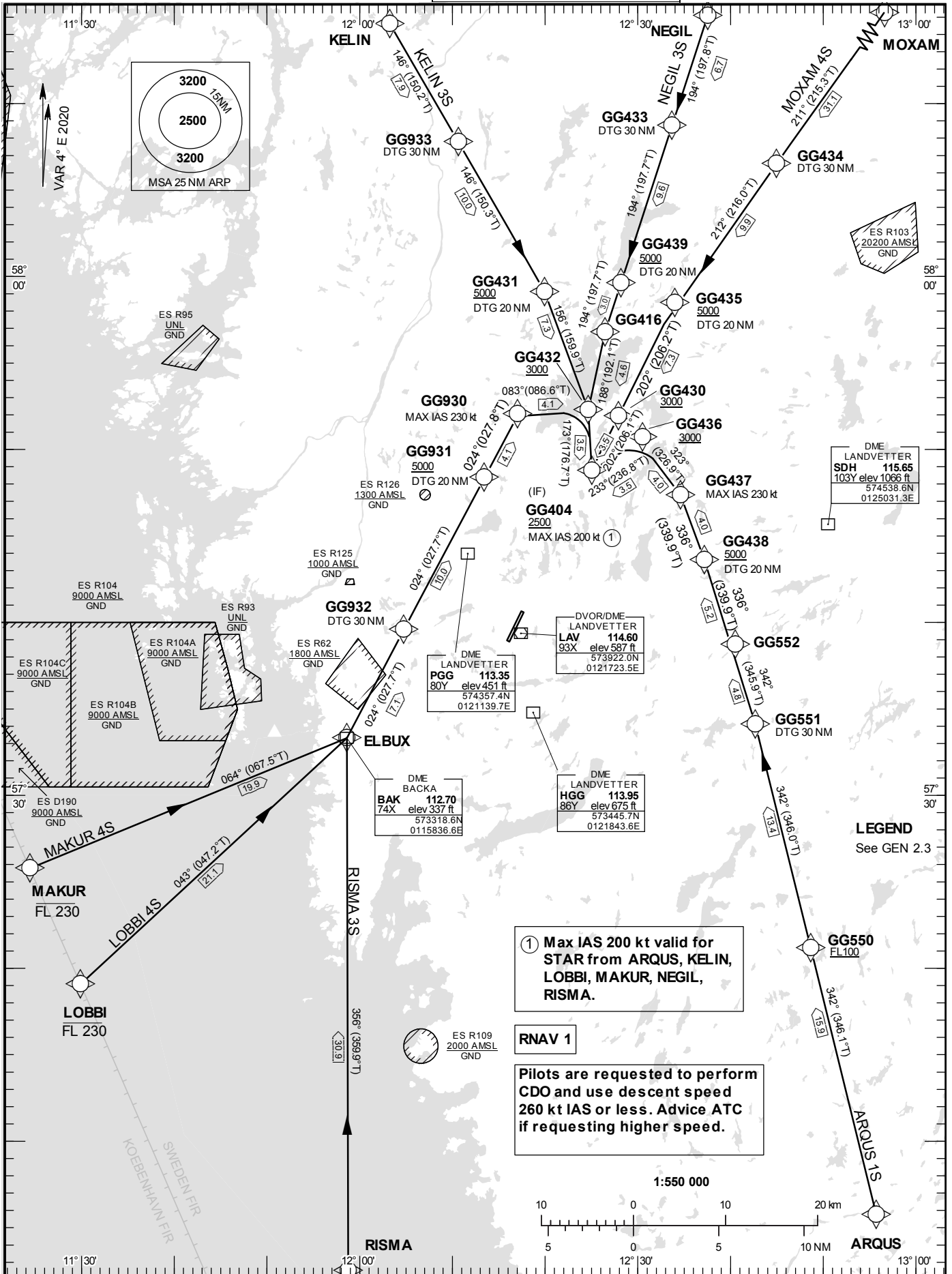


STANDARD INSTRUMENT  
ARRIVAL CHART (STAR) -  
ICAO

HGT and ALT in ft  
BRG are MAG (True)  
TA 5000 ft AMSL

LANDVETTER TOWER	118.605
LANDVETTER ATIS	118.380
GÖTEBORG APPROACH	124.680

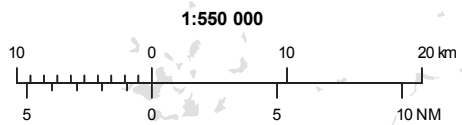
RNAV (DME/DME or GNSS)  
STAR RWY 21



① Max IAS 200 kt valid for STAR from ARQUS, KELIN, LOBBI, MAKUR, NEGIL, RISMA.

RNAV 1

Pilots are requested to perform CDO and use descent speed 260 kt IAS or less. Advice ATC if requesting higher speed.



**Prescribed Coding of RNAV STAR (DME/DME or GNSS) for RWY 21**

## REMARK

Following RNAV STARs are named CLOSED STARs leading to final approach.

RNAV STARs are based on RNAV 1.

Pilots are requested to perform CDO and use descent speed 260 kt IAS or less. Advise ATC if requesting higher speed.

Aircraft to GÖTEBORG/Landvetter shall not be operated at an airspeed of more than 250 kt IAS below FL100 unless otherwise instructed.

When established on ILS final approach track, maintain 160 kt IAS or more until passing OM, unless otherwise instructed. If unable, inform ATC immediately.

In case of radio communication failure, see AD 2.22 para 4.

**ARQUS 1S**

Path Term	Waypoint Identifier	Fly-over	Course °M(°T)	Dist (NM)	Turn Dir	Rest Alts (ft AMSL)	Speed Limits (kt)	VPA/ RDH (°/ft)	Rec Navaid	Navigation Specification
IF	ARQUS	-	-	-	-	-	-	-	-	RNAV 1
TF	GG550	-	342°(346.1°)	15.9	-	+FL100	-	-	-	RNAV 1
TF	GG551	-	342°(346.0°)	13.4	-	-	-	-	-	RNAV 1
TF	GG552	-	342°(345.9°)	4.8	-	-	-	-	-	RNAV 1
TF	GG438	-	336°(339.9°)	5.2	-	+5000	-	-	-	RNAV 1
TF	GG437	-	336°(339.9°)	4.0	-	-	-230	-	-	RNAV 1
TF	GG436	-	323°(326.9°)	4.0	-	+3000	-	-	-	RNAV 1
TF	GG404	-	233°(236.8°)	3.5	-	+2500	-200	-	-	RNAV 1

STAR instruction: ARQUS – GG550 (FL100 or above) – GG551 – GG552 – GG438 (5000 ft or above) – GG437 (MAX IAS 230kt) – GG436 (3000 ft or above) – GG404 (2500 ft or above, max IAS 200kt).

**KELIN 3S**

Path Term	Waypoint Identifier	Fly-over	Course °M(°T)	Dist (NM)	Turn Dir	Rest Alts (ft AMSL)	Speed Limits (kt)	VPA/ RDH (°/ft)	Rec Navaid	Navigation Specification
IF	KELIN	-	-	-	-	-	-	-	-	RNAV 1
TF	GG933	-	146°(150.2°)	7.9	-	-	-	-	-	RNAV 1
TF	GG431	-	146°(150.3°)	10.0	-	+5000	-	-	-	RNAV 1
TF	GG432	-	156°(159.9°)	7.3	-	+3000	-	-	-	RNAV 1
TF	GG404	-	173°(176.7°)	3.5	-	+2500	-200	-	-	RNAV 1

STAR instruction: KELIN – GG933 – GG431 (5000 ft or above) – GG432 (3000 ft or above) – GG404 (2500 ft or above, max IAS 200kt).

## LOBBI 4S

Path Term	Waypoint Identifier	Fly-over	Course °M(°T)	Dist (NM)	Turn Dir	Rest Alts (ft AMSL)	Speed Limits (kt)	VPA/RDH (°/ft)	Rec Navaid	Navigation Specification
IF	LOBBI	-	-	-	-	-FL230	-	-	-	RNAV 1
TF	ELBUX	-	043°(047.2°)	21.1	-	-	-	-	-	RNAV 1
TF	GG932	-	024°(027.7°)	7.1	-	-	-	-	-	RNAV 1
TF	GG931	-	024°(027.7°)	10.0	-	+5000	-	-	-	RNAV 1
TF	GG930	-	024°(027.8°)	4.1	-	-	-230	-	-	RNAV 1
TF	GG432	-	083°(086.6°)	4.1	-	+3000	-	-	-	RNAV 1
TF	GG404	-	173°(176.7°)	3.5	-	+2500	-200	-	-	RNAV 1

STAR instruction: LOBBI (FL230 or below) – ELBUX – GG932 – GG931 (5000 ft or above) – GG930 (max IAS 230kt) – GG432 (3000ft or above) – GG404 (2500 ft or above, max IAS 200kt).

## MAKUR 4S

Path Term	Waypoint Identifier	Fly-over	Course °M(°T)	Dist (NM)	Turn Dir	Rest Alts (ft AMSL)	Speed Limits (kt)	VPA/RDH (°/ft)	Rec Navaid	Navigation Specification
IF	MAKUR	-	-	-	-	-FL230	-	-	-	RNAV 1
TF	ELBUX	-	064°(067.5°)	19.9	-	-	-	-	-	RNAV 1
TF	GG932	-	024°(027.7°)	7.1	-	-	-	-	-	RNAV 1
TF	GG931	-	024°(027.7°)	10.0	-	+5000	-	-	-	RNAV 1
TF	GG930	-	024°(027.8°)	4.1	-	-	-230	-	-	RNAV 1
TF	GG432	-	083°(086.6°)	4.1	-	+3000	-	-	-	RNAV 1
TF	GG404	-	173°(176.7°)	3.5	-	+2500	-200	-	-	RNAV 1

STAR instruction: MAKUR (FL230 or below) – ELBUX – GG932 – GG931 (5000 ft or above) – GG930 (max IAS 230kt) – GG432 (3000ft or above) – GG404 (2500 ft or above, max IAS 200kt).

## MOXAM 4S

Path Term	Waypoint Identifier	Fly-over	Course °M(°T)	Dist (NM)	Turn Dir	Rest Alts (ft AMSL)	Speed Limits (kt)	VPA/RDH (°/ft)	Rec Navaid	Navigation Specification
IF	MOXAM	-	-	-	-	-	-	-	-	RNAV 1
TF	GG434	-	211°(215.3°)	31.1	-	-	-	-	-	RNAV 1
TF	GG435	-	212°(216.0°)	9.9	-	+5000	-	-	-	RNAV 1
TF	GG430	-	202°(206.2°)	7.3	-	+3000	-	-	-	RNAV 1
TF	GG404	-	202°(206.1°)	3.5	-	+2500	-	-	-	RNAV 1

STAR instruction: MOXAM – GG434 – GG435 (5000 ft or above) – GG430 (3000ft or above) – GG404 (2500 ft or above).

**NEGIL 3S**

Path Term	Waypoint Identifier	Fly-over	Course °M(°T)	Dist (NM)	Turn Dir	Rest Alts (ft AMSL)	Speed Limits (kt)	VPA/RDH (°/ft)	Rec Navaid	Navigation Specification
IF	NEGIL	-	-	-	-	-	-	-	-	RNAV 1
TF	GG433	-	194°(197.8°)	6.7	-	-	-	-	-	RNAV 1
TF	GG439	-	194°(197.7°)	9.6	-	+5000	-	-	-	RNAV 1
TF	GG416	-	194°(197.7°)	3.0	-	-	-	-	-	RNAV 1
TF	GG432	-	188°(192.1°)	4.6	-	+3000	-	-	-	RNAV 1
TF	GG404	-	173°(176.7°)	3.5	-	+2500	-200	-	-	RNAV 1

STAR instruction: NEGIL – GG433 – GG439 (5000 ft or above) – GG416 – GG432 (3000ft or above) – GG404 (2500 ft or above, max IAS 200kt).

**RISMA 3S**

Path Term	Waypoint Identifier	Fly-over	Course °M(°T)	Dist (NM)	Turn Dir	Rest Alts (ft AMSL)	Speed Limits (kt)	VPA/RDH (°/ft)	Rec Navaid	Navigation Specification
IF	RISMA	-	-	-	-	-	-	-	-	RNAV 1
TF	ELBUX	-	356°(359.9°)	30.9	-	-	-	-	-	RNAV 1
TF	GG932	-	024°(027.7°)	7.1	-	-	-	-	-	RNAV 1
TF	GG931	-	024°(027.7°)	10.0	-	+5000	-	-	-	RNAV 1
TF	GG930	-	024°(027.8°)	4.1	-	-	-230	-	-	RNAV 1
TF	GG432	-	083°(086.6°)	4.1	-	+3000	-	-	-	RNAV 1
TF	GG404	-	173°(176.7°)	3.5	-	+2500	-200	-	-	RNAV 1

STAR instruction: RISMA – ELBUX – GG932 – GG931 (5000 ft or above) – GG930 (max IAS 230kt) – GG432 (3000ft or above) – GG404 (2500 ft or above, max IAS 200kt).