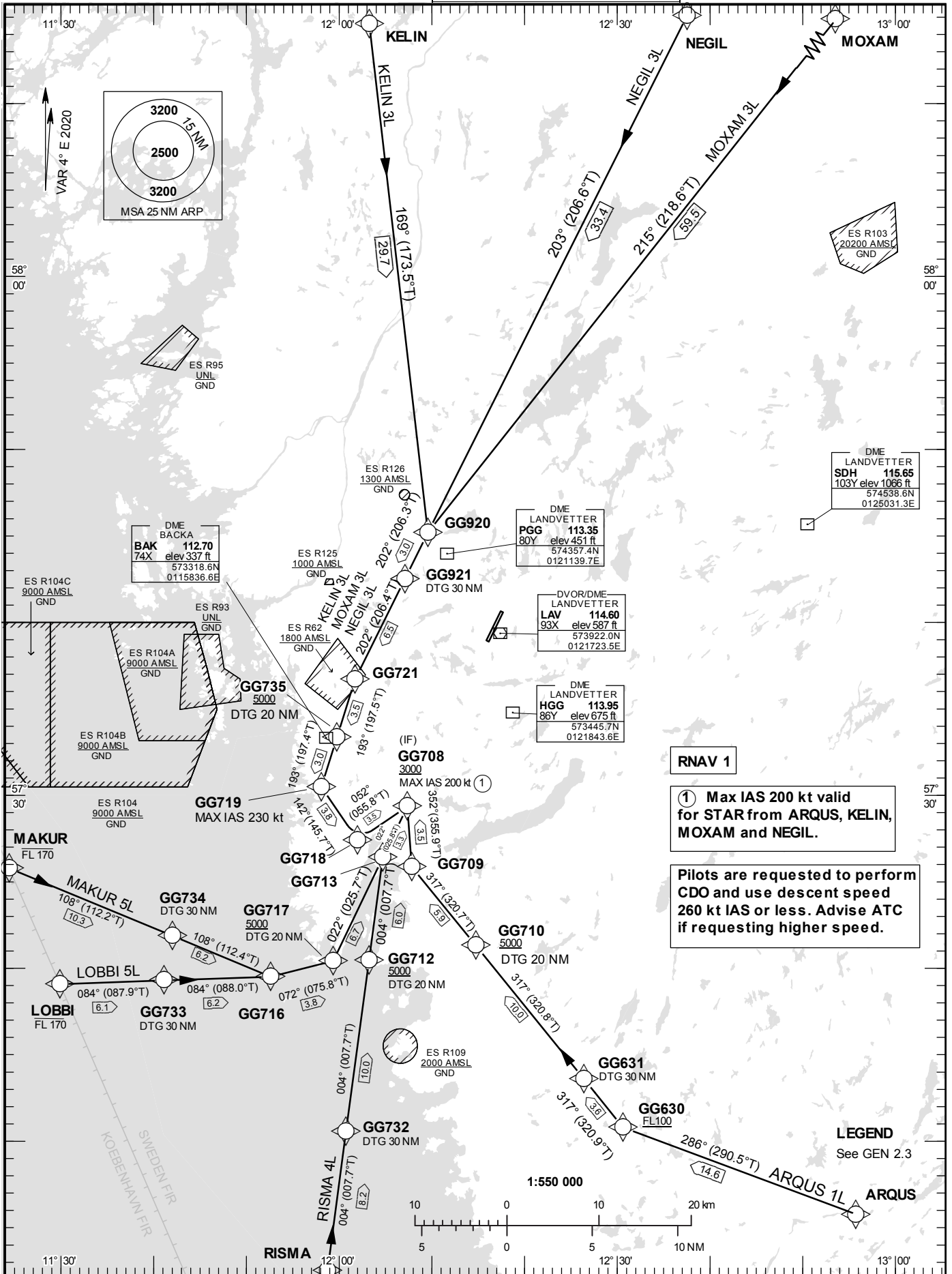


STANDARD INSTRUMENT
ARRIVAL CHART (STAR) -
ICAO

HGT and ALT in ft
BRG are MAG (True)
TA 5000 ft AMSL

LANDVETTER TOWER	118.605
LANDVETTER ATIS	118.380
GÖTEBORG APPROACH	124.680

RNAV (DME/DME or GNSS)
STAR RWY 03



DME BACKA	
BAK	112.70
74X	elev 337 ft
573318.6N	
0115836.6E	

DME LANDVETTER PGG	
PGG	113.35
80Y	elev 451 ft
574357.4N	
0121139.7E	

DVOR/DME LANDVETTER LAV	
LAV	114.60
93X	elev 537 ft
573922.0N	
0121723.5E	

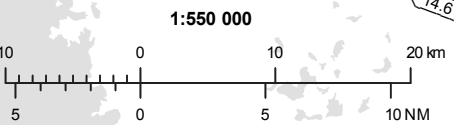
DME LANDVETTER HGG	
HGG	113.95
86Y	elev 675 ft
573445.7N	
0121843.6E	

RNAV 1

① Max IAS 200 kt valid for STAR from ARQUS, KELIN, MOXAM and NEGIL.

Pilots are requested to perform CDO and use descent speed 260 kt IAS or less. Advise ATC if requesting higher speed.

LEGEND
See GEN 2.3



Prescribed Coding of RNAV STAR (DME/DME or GNSS) for RWY 03

REMARK

Following RNAV STARs are named CLOSED STARs leading to final approach.

RNAV STARs are based on RNAV 1.

Pilots are requested to perform CDO and use descent speed 260 kt IAS or less. Advise ATC if requesting higher speed.

Aircraft to GÖTEBORG/Landvetter shall not be operated at an airspeed of more than 250 kt IAS below FL100 unless otherwise instructed.

When established on ILS final approach track, maintain 160 kt IAS or more until passing OM, unless otherwise instructed. If unable, inform ATC immediately.

In case of radio communication failure, see AD 2.22 para 4.

ARQUS 1L

Path Term	Waypoint Identifier	Fly-over	Course °M(°T)	Dist (NM)	Turn Dir	Rest Alts (ft AMSL)	Speed Limits (kt)	VPA/RDH (°/ft)	Rec Navaid	Navigation Specification
IF	ARQUS	-	-	-	-	-	-	-	-	RNAV 1
TF	GG630	-	286°(290.5°)	14.6	-	+FL100	-	-	-	RNAV 1
TF	GG631	-	317°(320.9°)	3.6	-	-	-	-	-	RNAV 1
TF	GG710	-	317°(320.8°)	10.0	-	+5000	-	-	-	RNAV 1
TF	GG709	-	317°(320.7°)	5.9	-	-	-	-	-	RNAV 1
TF	GG708	-	352°(355.9°)	3.5	-	+3000	-200	-	-	RNAV 1

STAR instruction: ARQUS – GG630 (FL100 or above) – GG631 – GG710 (5000 ft or above) – GG709 – GG708 (3000 ft or above, max IAS 200kt).

KELIN 3L

Path Term	Waypoint Identifier	Fly-over	Course °M(°T)	Dist (NM)	Turn Dir	Rest Alts (ft AMSL)	Speed Limits (kt)	VPA/RDH (°/ft)	Rec Navaid	Navigation Specification
IF	KELIN	-	-	-	-	-	-	-	-	RNAV 1
TF	GG920	-	169°(173.5°)	29.7	-	-	-	-	-	RNAV 1
TF	GG921	-	202°(206.3°)	3.0	-	-	-	-	-	RNAV 1
TF	GG721	-	202°(206.4°)	6.5	-	-	-	-	-	RNAV 1
TF	GG735	-	193°(197.5°)	3.5	-	+5000	-	-	-	RNAV 1
TF	GG719	-	193°(197.4°)	3.0	-	-	-230	-	-	RNAV 1
TF	GG718	-	142°(145.7°)	3.8	-	-	-	-	-	RNAV 1
TF	GG708	-	052°(055.8°)	3.5	-	+3000	-200	-	-	RNAV 1

STAR instruction: KELIN – GG920 – GG921 – GG721 – GG735 (5000 ft or above) – GG719 (max IAS 230kt) – GG718 – GG708 (3000 ft or above, max IAS 200kt).

LOBBI 5L

Path Term	Waypoint Identifier	Fly-over	Course °M(°T)	Dist (NM)	Turn Dir	Rest Alts (ft AMSL)	Speed Limits (kt)	VPA/RDH (°/ft)	Rec Navaid	Navigation Specification
IF	LOBBI	-	-	-	-	- FL170	-	-	-	RNAV 1
TF	GG733	-	084°(087.9°)	6.1	-	-	-	-	-	RNAV 1
TF	GG716	-	084°(088.0°)	6.2	-	-	-	-	-	RNAV 1
TF	GG717	-	072°(075.8°)	3.8	-	+5000	-	-	-	RNAV 1
TF	GG713	-	022°(025.7°)	6.7	-	-	-	-	-	RNAV 1
TF	GG708	-	022°(025.8°)	3.3	-	+3000	-	-	-	RNAV 1

STAR instruction: LOBBI (FL170 or below) – GG733 – GG716 – GG717 (5000 ft or above) – GG713 – GG708 (3000 ft or above).

MAKUR 5L

Path Term	Waypoint Identifier	Fly-over	Course °M(°T)	Dist (NM)	Turn Dir	Rest Alts (ft AMSL)	Speed Limits (kt)	VPA/RDH (°/ft)	Rec Navaid	Navigation Specification
IF	MAKUR	-	-	-	-	- FL170	-	-	-	RNAV 1
TF	GG734	-	108°(112.2°)	10.3	-	-	-	-	-	RNAV 1
TF	GG716	-	108°(112.4°)	6.2	-	-	-	-	-	RNAV 1
TF	GG717	-	072°(075.8°)	3.8	-	+5000	-	-	-	RNAV 1
TF	GG713	-	022°(025.7°)	6.7	-	-	-	-	-	RNAV 1
TF	GG708	-	022°(025.8°)	3.3	-	+3000	-	-	-	RNAV 1

STAR instruction: MAKUR (FL170 or below) – GG734 – GG716 – GG717 (5000 ft or above) – GG713 – GG708 (3000 ft or above).

MOXAM 3L

Path Term	Waypoint Identifier	Fly-over	Course °M(°T)	Dist (NM)	Turn Dir	Rest Alts (ft AMSL)	Speed Limits (kt)	VPA/RDH (°/ft)	Rec Navaid	Navigation Specification
IF	MOXAM	-	-	-	-	-	-	-	-	RNAV 1
TF	GG920	-	215°(218.6°)	59.5	-	-	-	-	-	RNAV 1
TF	GG921	-	202°(206.3°)	3.0	-	-	-	-	-	RNAV 1
TF	GG721	-	202°(206.4°)	6.5	-	-	-	-	-	RNAV 1
TF	GG735	-	193°(197.5°)	3.5	-	+5000	-	-	-	RNAV 1
TF	GG719	-	193°(197.4°)	3.0	-	-	- 230	-	-	RNAV 1
TF	GG718	-	142°(145.7°)	3.8	-	-	-	-	-	RNAV 1
TF	GG708	-	052°(055.8°)	3.5	-	+3000	- 200	-	-	RNAV 1

STAR instruction: MOXAM – GG920 – GG921 – GG721 – GG735 (5000 ft or above) – GG719 (max IAS 230kt) – GG718 – GG708 (3000 ft or above, max IAS 200kt).

NEGIL 3L

Path Term	Waypoint Identifier	Fly-over	Course °M(°T)	Dist (NM)	Turn Dir	Rest Alts (ft AMSL)	Speed Limits (kt)	VPA/ RDH (°/ft)	Rec Navaid	Navigation Specification
IF	NEGIL	-	-	-	-	-	-	-	-	RNAV 1
TF	GG920	-	203°(206.6°)	33.4	-	-	-	-	-	RNAV 1
TF	GG921	-	202°(206.3°)	3.0	-	-	-	-	-	RNAV 1
TF	GG721	-	202°(206.4°)	6.5	-	-	-	-	-	RNAV 1
TF	GG735	-	193°(197.5°)	3.5	-	+5000	-	-	-	RNAV 1
TF	GG719	-	193°(197.4°)	3.0	-	-	- 230	-	-	RNAV 1
TF	GG718	-	142°(145.7°)	3.8	-	-	-	-	-	RNAV 1
TF	GG708	-	052°(055.8°)	3.5	-	+3000	- 200	-	-	RNAV 1

STAR instruction: NEGIL – GG920 – GG921 – GG721 – GG735 (5000 ft or above) – GG719 (max IAS 230kt) – GG718 – GG708 (3000 ft or above, max IAS 200kt).

RISMA 4L

Path Term	Waypoint Identifier	Fly-over	Course °M(°T)	Dist (NM)	Turn Dir	Rest Alts (ft AMSL)	Speed Limits (kt)	VPA/ RDH (°/ft)	Rec Navaid	Navigation Specification
IF	RISMA	-	-	-	-	-	-	-	-	RNAV 1
TF	GG732	-	004°(007.7°)	8.2	-	-	-	-	-	RNAV 1
TF	GG712	-	004°(007.7°)	10.0	-	+5000	-	-	-	RNAV 1
TF	GG713	-	004°(007.7°)	6.0	-	-	-	-	-	RNAV 1
TF	GG708	-	022°(025.8°)	3.3	-	+3000	-	-	-	RNAV 1

STAR instruction: RISMA – GG732 – GG712 (5000 ft or above) – GG713 – GG708 (3000 ft or above).