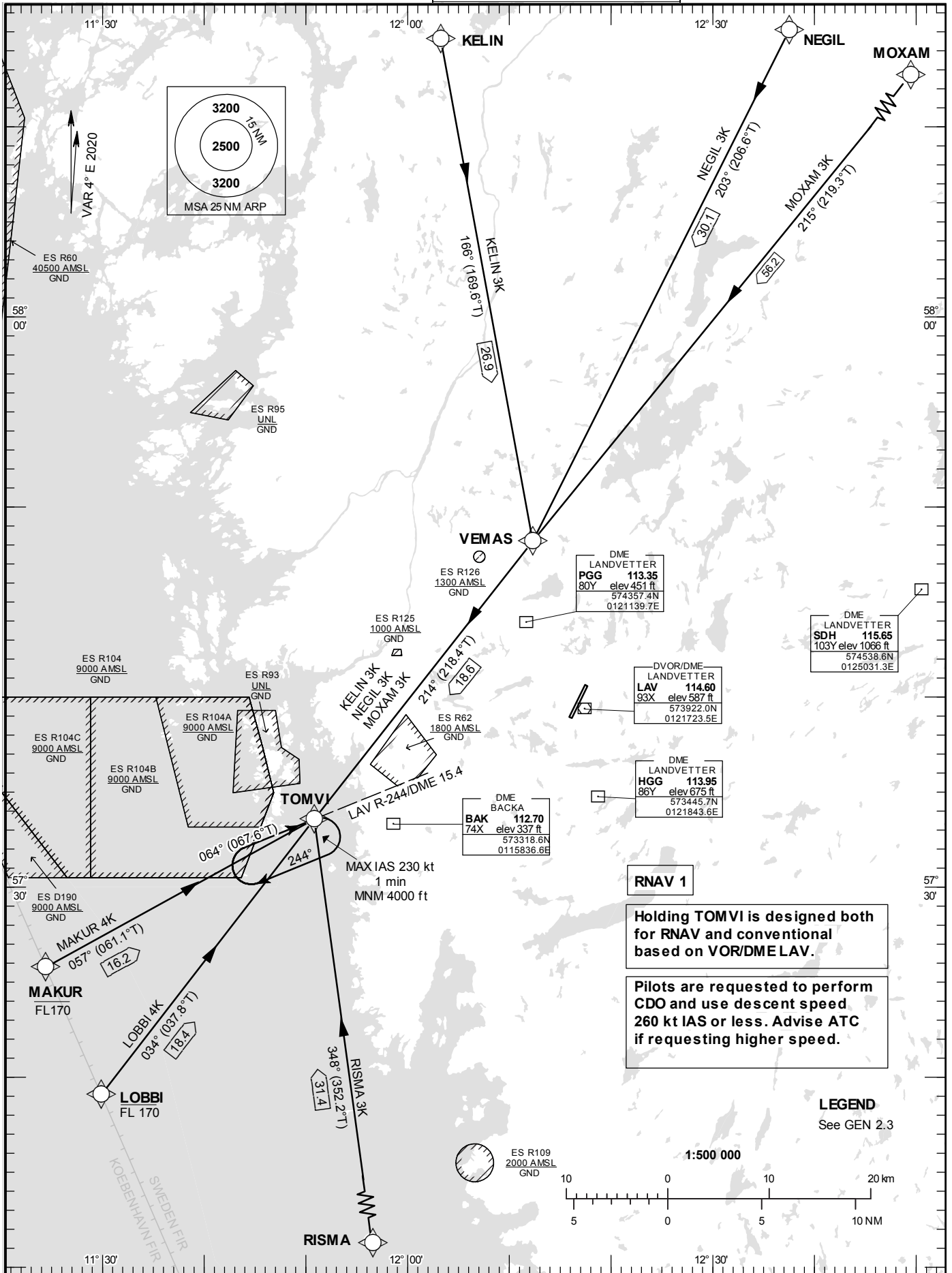


STANDARD INSTRUMENT
ARRIVAL CHART (STAR) -
ICAO

HGT and ALT in ft
BRG are MAG (True)
TA 5000 ft AMSL

| | |
|-------------------|---------|
| LANDVETTER TOWER | 118.605 |
| LANDVETTER ATIS | 118.380 |
| GÖTEBORG APPROACH | 124.680 |

RNAV (DME/DME or GNSS)
STAR RWY 03

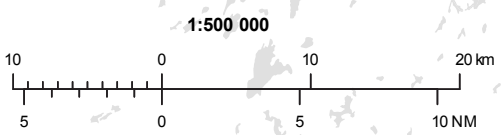


RNAV 1

Holding TOMVI is designed both for RNAV and conventional based on VOR/DME LAV.

Pilots are requested to perform CDO and use descent speed 260 kt IAS or less. Advise ATC if requesting higher speed.

LEGEND
See GEN 2.3



Prescribed Coding of RNAV STAR (DME/DME or GNSS) for RWY 03

REMARK

Following RNAV STARs are named OPEN STARs and aircraft will be radar vectored to final.

RNAV STARs are based on RNAV 1.

Operators unable flying RNAV 1 shall inform ATC by using phraseology "UNABLE RNAV STAR". Radar vectors will then be provided.

Pilots are requested to perform CDO and use descent speed 260 kt IAS or less. Advise ATC if requesting higher speed.

Aircraft to GÖTEBORG/Landvetter shall not be operated at an airspeed of more than 250 kt IAS below FL100 unless otherwise instructed.

When established on ILS final approach track, maintain 160 kt IAS or more until passing OM, unless otherwise instructed. If unable, inform ATC immediately.

In case of radio communication failure, see AD 2.22 para 4.

KELIN 3K

| Path Term | Waypoint Identifier | Fly-over | Course °M(°T) | Dist (NM) | Turn Dir | Rest Alts (ft AMSL) | Speed Limits (kt) | VPA/ RDH (°/ft) | Rec Navaid | Navigation Specification |
|-----------|---------------------|----------|---------------|-----------|----------|---------------------|-------------------|-----------------|------------|--------------------------|
| IF | KELIN | - | - | - | - | - | - | - | - | RNAV 1 |
| TF | VEMAS | - | 166°(169.6°) | 26.9 | - | - | - | - | - | RNAV 1 |
| TF | TOMVI | - | 214°(218.4°) | 18.6 | - | - | - | - | - | RNAV 1 |

STAR instruction: KELIN – VEMAS – TOMVI – radar vectors.

LOBBI 4K

| Path Term | Waypoint Identifier | Fly-over | Course °M(°T) | Dist (NM) | Turn Dir | Rest Alts (ft AMSL) | Speed Limits (kt) | VPA/ RDH (°/ft) | Rec Navaid | Navigation Specification |
|-----------|---------------------|----------|---------------|-----------|----------|---------------------|-------------------|-----------------|------------|--------------------------|
| IF | LOBBI | - | - | - | - | -FL170 | - | - | - | RNAV 1 |
| TF | TOMVI | - | 034°(037.8°) | 18.4 | - | - | - | - | - | RNAV 1 |

STAR instruction: LOBBI (FL170 or below) – TOMVI – radar vectors.

MAKUR 4K

| Path Term | Waypoint Identifier | Fly-over | Course °M(°T) | Dist (NM) | Turn Dir | Rest Alts (ft AMSL) | Speed Limits (kt) | VPA/ RDH (°/ft) | Rec Navaid | Navigation Specification |
|-----------|---------------------|----------|---------------|-----------|----------|---------------------|-------------------|-----------------|------------|--------------------------|
| IF | MAKUR | - | - | - | - | -FL170 | - | - | - | RNAV 1 |
| TF | TOMVI | - | 057°(061.1°) | 16.2 | - | - | - | - | - | RNAV 1 |

STAR instruction: MAKUR (FL170 or below) – TOMVI – radar vectors.

MOXAM 3K

| Path Term | Waypoint Identifier | Fly-over | Course °M(°T) | Dist (NM) | Turn Dir | Rest Alts (ft AMSL) | Speed Limits (kt) | VPA/RDH (°/ft) | Rec Navaid | Navigation Specification |
|-----------|---------------------|----------|---------------|-----------|----------|---------------------|-------------------|----------------|------------|--------------------------|
| IF | MOXAM | - | - | - | - | - | - | - | - | RNAV 1 |
| TF | VEMAS | - | 215°(219.3°) | 56.2 | - | - | - | - | - | RNAV 1 |
| TF | TOMVI | - | 214°(218.4°) | 18.6 | - | - | - | - | - | RNAV 1 |

STAR instruction: MOXAM – VEMAS – TOMVI – radar vectors.

NEGIL 3K

| Path Term | Waypoint Identifier | Fly-over | Course °M(°T) | Dist (NM) | Turn Dir | Rest Alts (ft AMSL) | Speed Limits (kt) | VPA/RDH (°/ft) | Rec Navaid | Navigation Specification |
|-----------|---------------------|----------|---------------|-----------|----------|---------------------|-------------------|----------------|------------|--------------------------|
| IF | NEGIL | - | - | - | - | - | - | - | - | RNAV 1 |
| TF | VEMAS | - | 203°(206.6°) | 30.1 | - | - | - | - | - | RNAV 1 |
| TF | TOMVI | - | 214°(218.4°) | 18.6 | - | - | - | - | - | RNAV 1 |

STAR instruction: NEGIL – VEMAS – TOMVI – radar vectors.

RISMA 3K

| Path Term | Waypoint Identifier | Fly-over | Course °M(°T) | Dist (NM) | Turn Dir | Rest Alts (ft AMSL) | Speed Limits (kt) | VPA/RDH (°/ft) | Rec Navaid | Navigation Specification |
|-----------|---------------------|----------|---------------|-----------|----------|---------------------|-------------------|----------------|------------|--------------------------|
| IF | RISMA | - | - | - | - | - | - | - | - | RNAV 1 |
| TF | TOMVI | - | 348°(352.2°) | 31.4 | - | - | - | - | - | RNAV 1 |

STAR instruction: RISMA – TOMVI – radar vectors.