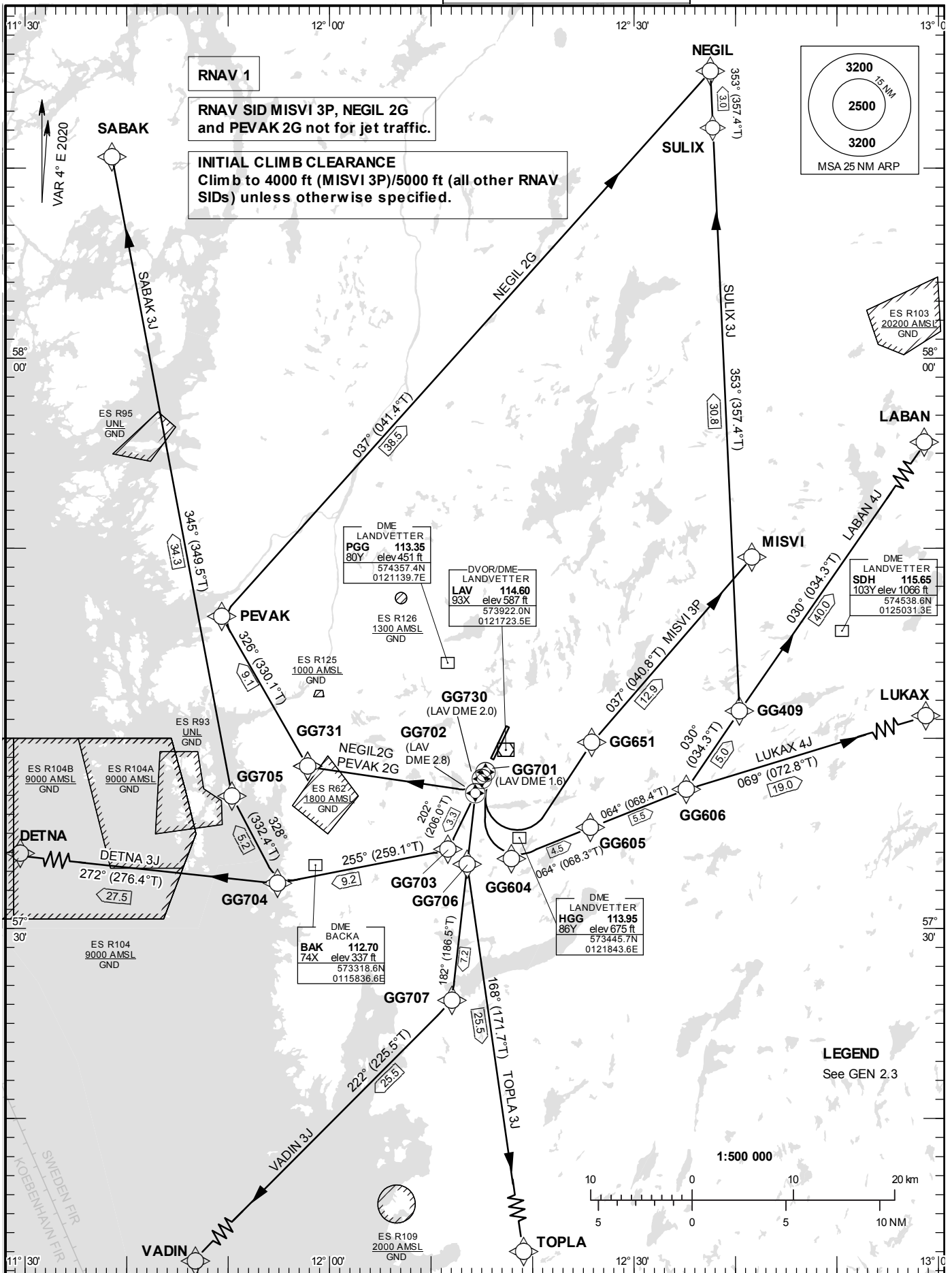


STANDARD INSTRUMENT  
DEPARTURE CHART (SID) -  
ICAO

HGT and ALT in ft  
BRG are MAG (True)  
TA 5000 ft AMSL

LANDVETTER TOWER	118.605
LANDVETTER ATIS	118.380
GÖTEBORG APPROACH	124.680

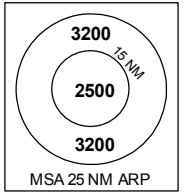
RNAV (DME/DME or GNSS)  
SID RWY 21



**RNAV 1**

RNAV SID MISVI 3P, NEGIL 2G and PEGAK 2G not for jet traffic.

**INITIAL CLIMB CLEARANCE**  
Climb to 4000 ft (MISVI 3P)/5000 ft (all other RNAV SIDs) unless otherwise specified.



**LEGEND**  
See GEN 2.3

**Prescribed Coding of RNAV SID (DME/DME or GNSS) for RWY 21**

## REMARK

INITIAL CLIMB CLEARANCE: Climb to 4000 ft (MISVI 3P)/5000 ft (all other RNAV SIDs) unless otherwise specified.

All RNAV SIDs are based on RNAV 1.

MNM climb gradient due to terrain/obstacles in individual departures below:  
Where no climb gradient is specified 3.3% (200 ft/NM) is assumed.

MNM climb gradient required by ATC: Aircraft proceeding on SID shall use 6.6% (400 ft/NM) as a minimum gradient of climb up to 5000 ft AMSL. Aircraft unable to conform with this procedure shall inform ATC accordingly.

Aircraft from GÖTEBORG/Landvetter shall not be operated at an airspeed of more than 250 kt IAS below FL100 unless otherwise instructed.

When instructed by TWR contact GÖTEBORG APPROACH on frequency indicated adjacent to SID instruction below.

RNAV SID MISVI 3P, NEGIL 2G, PEVAK 2G not for jet traffic.

**DETNA 3J**

Path Term	Waypoint Identifier	Fly-over	Course °M(°T)	Dist (NM)	Turn Dir	Rest Alts (ft AMSL)	Speed Limits (kt)	VPA/RDH (°/ft)	Rec Navaid	Navigation Specification
CF	GG702	Y	202°(206.0°)	2.1	-	-	-	-	LAV	RNAV 1
TF	GG703	-	202°(206.0°)	3.3	-	-	-	-	-	RNAV 1
TF	GG704	-	255°(259.1°)	9.2	-	-	-	-	-	RNAV 1
TF	DETNA	-	272°(276.4°)	27.5	-	-	-	-	-	RNAV 1

SID instruction: Climb on track 202° to GG702 – GG703 – GG704 – DETNA.

**124.205**

ACFT unable to follow RNAV SID: Report "unable RNAV SID due RNAV type" to Clearance Delivery and "unable SID" to Göteborg Approach at first contact. Climb on track 202° to LAV DME 5.2. Turn right to track 255°. Expect radar vectors to DETNA.

**LABAN 4J**

Path Term	Waypoint Identifier	Fly-over	Course °M(°T)	Dist (NM)	Turn Dir	Rest Alts (ft AMSL)	Speed Limits (kt)	VPA/RDH (°/ft)	Rec Navaid	Navigation Specification
CF	GG701	Y	202°(206.0°)	0.9	-	-	-	-	LAV	RNAV 1
CA	-	-	202°(206.0°)	-	-	+900	-	-	-	RNAV 1
DF	GG604	-	-	-	-	-	-210	-	-	RNAV 1
TF	GG605	-	064°(068.3°)	4.5	L	-	-	-	-	RNAV 1
TF	GG606	-	064°(068.4°)	5.5	-	-	-	-	-	RNAV 1
TF	LABAN	-	030°(034.3°)	40.0	-	-	-	-	-	RNAV 1

SID instruction: Climb on track 202° to GG701 (MNM 900 ft before turn) – GG604 (max IAS 210 kt until GG604) – GG605 – GG606 – LABAN (MNM climb gradient 7.3% (445 ft /NM) until GG701).

**124.680**

ACFT unable to follow RNAV SID: Report "unable RNAV SID due RNAV type" to Clearance Delivery and "unable RNAV SID" to Göteborg Approach at first contact. Climb on track 202° to LAV DME 1.6 (MNM 900 ft before turn). Turn left to track 153° (max 210 kt IAS until established on 153°). At LAV DME 3.8 turn left to track 065°. Expect radar vectors to LABAN (MNM climb gradient 7.3% (445 ft /NM) until LAV DME 1.6).

## LUKAX 4J

Path Term	Waypoint Identifier	Fly-over	Course °M(°T)	Dist (NM)	Turn Dir	Rest Alts (ft AMSL)	Speed Limits (kt)	VPA/RDH (°/ft)	Rec Navaid	Navigation Specification
CF	GG701	Y	202°(206.0°)	0.9	-	-	-	-	LAV	RNAV 1
CA	-	-	202°(206.0°)	-	-	+900	-	-	-	RNAV 1
DF	GG604	-	-	-	-	-	-210	-	-	RNAV 1
TF	GG605	-	064°(068.3°)	4.5	L	-	-	-	-	RNAV 1
TF	GG606	-	064°(068.4°)	5.5	-	-	-	-	-	RNAV 1
TF	LUKAX	-	069°(072.8°)	19.0	-	-	-	-	-	RNAV 1

SID instruction: Climb on track 202° to GG701 (MNM 900 ft before turn) – GG604 (max IAS 210 kt until GG604) – GG605 – GG606 – LUKAX (MNM climb gradient 7.3% (445 ft /NM) until GG701). **124.680**

ACFT unable to follow RNAV SID: Report “unable RNAV SID due RNAV type” to Clearance Delivery and “unable RNAV SID” to Göteborg Approach at first contact.  
Climb on track 202° to LAV DME 1.6 (MNM 900 ft before turn). Turn left to track 153° (max 210 kt IAS until established on 153°). At LAV DME 3.8 turn left to track 065°. Expect radar vectors to LUKAX. (MNM climb gradient 7.3% (445 ft /NM) until LAV DME 1.6).

## MISVI 3P (Not for jet traffic)

Path Term	Waypoint Identifier	Fly-over	Course °M(°T)	Dist (NM)	Turn Dir	Rest Alts (ft AMSL)	Speed Limits (kt)	VPA/RDH (°/ft)	Rec Navaid	Navigation Specification
CA	-	-	202°(206.0°)	-	-	1000	-	-	-	RNAV 1
DF	GG651	-	-	-	L	-	-210	-	-	RNAV 1
TF	MISVI	-	037°(040.8°)	12.9	-	-	-	-	-	RNAV 1

SID instruction: Climb on track 202° to 1000 ft – GG651 (max IAS 210 kt until GG651) – MISVI. **124.680**

ACFT unable to follow RNAV SID: Report “unable RNAV SID due RNAV type” to Clearance Delivery and “unable RNAV SID” to Göteborg Approach at first contact.  
Climb on track 202° to 1000 ft. Turn left to track 065°, (max 210 kt until established on 065°). Expect radar vectors to MISVI.

## NEGIL 2G (Not for jet traffic)

Path Term	Waypoint Identifier	Fly-over	Course °M(°T)	Dist (NM)	Turn Dir	Rest Alts (ft AMSL)	Speed Limits (kt)	VPA/RDH (°/ft)	Rec Navaid	Navigation Specification
CF	GG730	Y	202°(206.0°)	1.3	-	-	-	-	LAV	RNAV 1
CA	-	-	-	-	-	+900	-	-	-	RNAV 1
DF	GG731	-	-	-	-	-	-210	-	-	RNAV 1
TF	PEVAK	-	326°(330.1°)	9.1	-	-	-	-	-	RNAV 1
TF	NEGIL	-	037°(041.4°)	38.5	-	-	-	-	-	RNAV 1

SID instruction: Climb on track 202° to GG730 (MNM 900 ft before turn) – GG731 (max IAS 210 kt until GG731) – PEVAK – NEGIL (MNM climb gradient 4.9% (300 ft /NM) until GG730). **124.205**

ACFT unable to follow RNAV SID: Report “unable RNAV SID due RNAV type” to Clearance Delivery and “unable RNAV SID” to Göteborg Approach at first contact.  
Climb on track 202° to LAV DME 2.0 (MNM 900 ft before turn). Turn right to track 276° (max IAS 210 kt until established on track 276°). Expect radar vectors to NEGIL.  
(MNM climb gradient 4.9% (300 ft /NM) until LAV DME 2.0).

## PEVAK 2G (Not for jet traffic)

Path Term	Waypoint Identifier	Fly-over	Course °M(°T)	Dist (NM)	Turn Dir	Rest Alts (ft AMSL)	Speed Limits (kt)	VPA/ RDH (°/ft)	Rec Navaid	Navigation Specification
CF	GG730	Y	202°(206.0°)	1.3	-	-	-	-	LAV	RNAV 1
CA	-	-	-	-	-	+900	-	-	-	RNAV 1
DF	GG731	-	-	-	-	-	-210	-	-	RNAV 1
TF	PEVAK	-	326°(330.1°)	9.1	-	-	-	-	-	RNAV 1

SID instruction: Climb on track 202° to GG730 (MNM 900 ft before turn) – GG731 (max IAS 210 kt until GG731) – PEVAK (MNM climb gradient 4.9% (300 ft /NM) until GG730). **124.205**

ACFT unable to follow RNAV SID: Report “unable RNAV SID due RNAV type” to Clearance Delivery and “unable RNAV SID” to Göteborg Approach at first contact.  
Climb on track 202° to LAV DME 2.0 (MNM 900 ft before turn). Turn right to track 276° (max IAS 210 kt until established on track 276°). Expect radar vectors to PEVAK.  
(MNM climb gradient 4.9% (300 ft /NM) until LAV DME 2.0).

## SABAK 3J

Path Term	Waypoint Identifier	Fly-over	Course °M(°T)	Dist (NM)	Turn Dir	Rest Alts (ft AMSL)	Speed Limits (kt)	VPA/ RDH (°/ft)	Rec Navaid	Navigation Specification
CF	GG702	Y	202°(206.0°)	2.1	-	-	-	-	LAV	RNAV 1
TF	GG703	-	202°(206.0°)	3.3	-	-	-	-	-	RNAV 1
TF	GG704	-	255°(259.1°)	9.2	-	-	-	-	-	RNAV 1
TF	GG705	-	328°(332.4°)	5.2	-	-	-	-	-	RNAV 1
TF	SABAK	-	345°(349.5°)	34.3	-	-	-	-	-	RNAV 1

SID instruction: Climb on track 202° to GG702 – GG703 – GG704 – GG705 – SABAK. **124.205**

ACFT unable to follow RNAV SID: Report “unable RNAV SID due RNAV type” to Clearance Delivery and “unable RNAV SID” to Göteborg Approach at first contact.  
Climb on track 202° to LAV DME 5.2. Turn right to track 255°. Expect radar vectors to SABAK.

## SULIX 3J

Path Term	Waypoint Identifier	Fly-over	Course °M(°T)	Dist (NM)	Turn Dir	Rest Alts (ft AMSL)	Speed Limits (kt)	VPA/ RDH (°/ft)	Rec Navaid	Navigation Specification
CF	GG701	Y	202°(206.0°)	0.9	-	-	-	-	LAV	RNAV 1
CA	-	-	202°(206.0°)	-	-	+900	-	-	-	RNAV 1
DF	GG604	-	-	-	-	-	-210	-	-	RNAV 1
TF	GG605	-	064°(068.3°)	4.5	L	-	-	-	-	RNAV 1
TF	GG606	-	064°(068.4°)	5.5	-	-	-	-	-	RNAV 1
TF	GG409	-	030°(034.3°)	5.0	-	-	-	-	-	RNAV 1
TF	SULIX	-	353°(357.4°)	30.8	-	-	-	-	-	RNAV 1
TF	NEGIL	-	353°(357.4°)	3.0	-	-	-	-	-	RNAV 1

SID instruction: Climb on track 202° to GG701 (MNM 900 ft before turn) – GG604 (max IAS 210 kt until GG604) – GG605 – GG606 – GG409 – SULIX – NEGIL. **124.680**  
(MNM climb gradient 7.3% (445 ft /NM) until GG701).

ACFT unable to follow RNAV SID: Report “unable RNAV SID due RNAV type” to Clearance Delivery and “unable RNAV SID” to Göteborg Approach at first contact.  
Climb on track 202° to LAV DME 1.6 (MNM 900 ft before turn). Turn left to track 153° (max 210 kt IAS until established on 153°). At LAV DME 3.8 turn left to track 065°. Expect radar vectors to NEGIL. (MNM climb gradient 7.3% (445 ft /NM) until LAV DME 1.6).

## TOPLA 3J

Path Term	Waypoint Identifier	Fly-over	Course °M(°T)	Dist (NM)	Turn Dir	Rest Alts (ft AMSL)	Speed Limits (kt)	VPA/ RDH (°/ft)	Rec Navaid	Navigation Specification
CF	GG702	Y	202°(206.0°)	2.1	-	-	-	-	LAV	RNAV 1
CA	-	-	-	-	-	+900	-	-	-	RNAV 1
DF	GG706	-	-	-	-	-	-	-	-	RNAV 1
TF	TOPLA	-	168°(171.7°)	25.5	-	-	-	-	-	RNAV 1

SID instruction: Climb on track 202° to GG702 (MNM 900 ft before turn) – GG706 – TOPLA. **124.205**

ACFT unable to follow RNAV SID: Report “unable RNAV SID due RNAV type” to Clearance Delivery and “unable RNAV SID” to Göteborg Approach at first contact.  
Climb on track 202° to LAV DME 2.8 (MNM 900 ft before turn). Turn left to track 183°. Expect radar vectors to TOPLA.

## VADIN 3J

Path Term	Waypoint Identifier	Fly-over	Course °M(°T)	Dist (NM)	Turn Dir	Rest Alts (ft AMSL)	Speed Limits (kt)	VPA/ RDH (°/ft)	Rec Navaid	Navigation Specification
CF	GG702	Y	202°(206.0°)	2.1	-	-	-	-	LAV	RNAV 1
CA	-	-	-	-	-	+900	-	-	-	RNAV 1
DF	GG706	-	-	-	-	-	-	-	-	RNAV 1
TF	GG707	-	182°(186.5°)	7.2	-	-	-	-	-	RNAV 1
TF	VADIN	-	222°(225.5°)	25.5	-	-	-	-	-	RNAV 1

SID instruction: Climb on track 202° to GG702 (MNM 900 ft before turn) – GG706 – GG707 – VADIN. **124.205**

ACFT unable to follow RNAV SID: Report “unable RNAV SID due RNAV type” to Clearance Delivery and “unable RNAV SID” to Göteborg Approach at first contact.  
Climb on track 202° to LAV DME 2.8 (MNM 900 ft before turn). Turn left to track 183°. Expect radar vectors to VADIN.