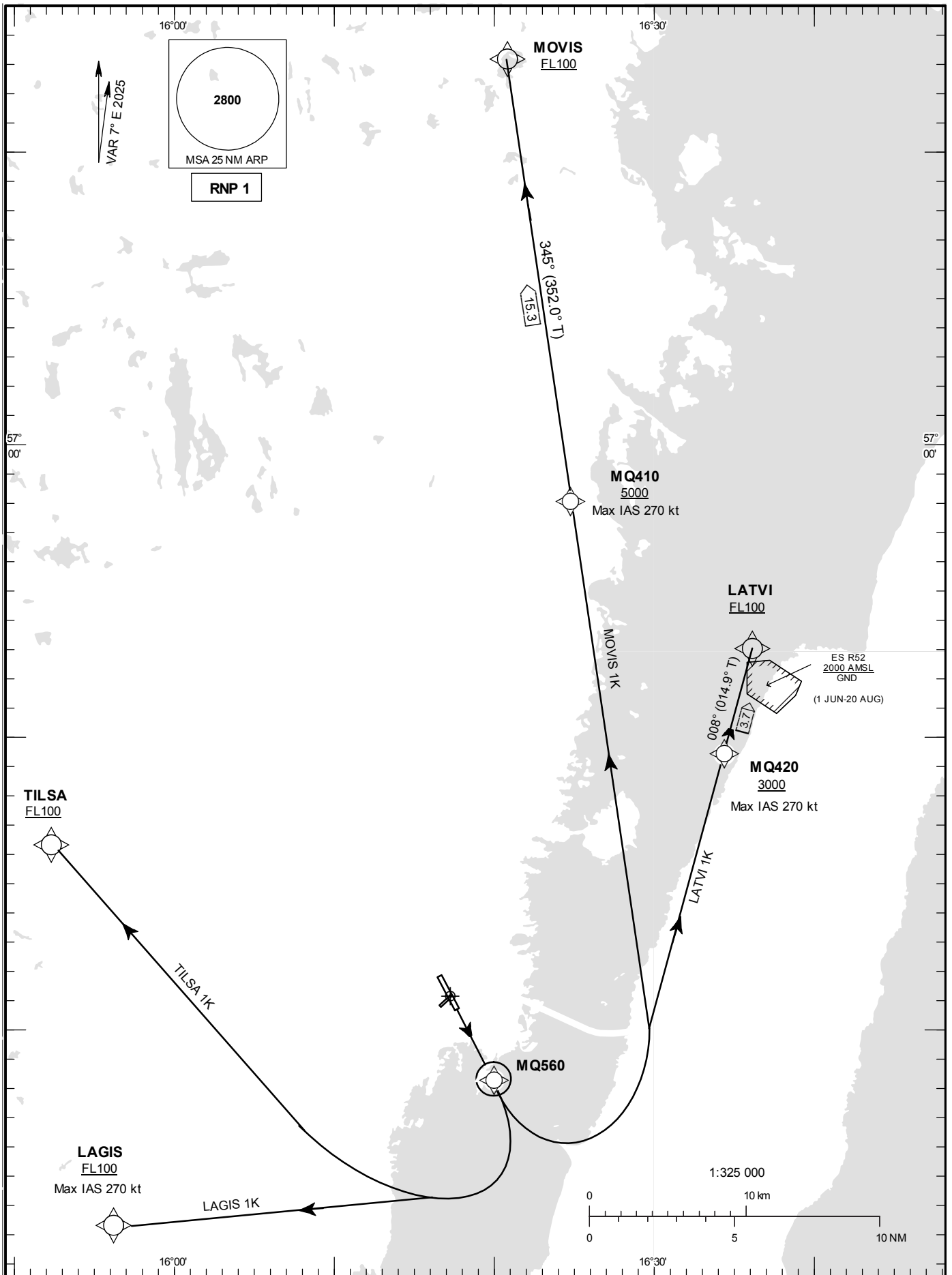


STANDARD INSTRUMENT  
DEPARTURE CHART (SID) -  
ICAO

HGT and ALT in ft  
BRG are MAG  
TA 5000 ft AMSL

KALMAR TOWER 130.805

RNP RWY 16  
LAGIS 1K, LATVI 1K, MOVIS 1K,  
TILSA 1K.



**RNP SID RWY 16 Coding tables and Notes**

1. Operators unable to fly RNP 1 shall inform ATC "UNABLE RNP SID". Radar vectors or conventional SID will then be provided.
2. +FL100 altitude restriction at LAGIS, LATVI, MOVIS and TILSA are provided to stay within controlled airspace.
3. SID LAGIS 1K: MNM average climb gradient 9.8% required to reach LAGIS at FL100 and stay within controlled airspace.
4. SID LATVI 1K: MNM average climb gradient 8.2% required to reach LATVI at FL100 and stay within controlled airspace.
5. SID TILSA 1K: MNM average climb gradient 8.3% required to reach TILSA at FL100 and stay within controlled airspace.

**LAGIS 1K**

Path Desc	Waypoint Identifier	Fly-over	Course °M(°T)	Dist (NM)	Turn Dir	Altitude	Speed	VPA/RDH	Rec Navaid	Navigation Specification
DF	MQ560	Y	-	-	-	-	-	-	-	RNP 1
DF	LAGIS	-	-	-	R	+FL100	-270	-	-	RNP 1

SID instruction: MQ560 – LAGIS (FL100 or above, Max IAS 270 kt)

**LATVI 1K**

Path Desc	Waypoint Identifier	Fly-over	Course °M(°T)	Dist (NM)	Turn Dir	Altitude	Speed	VPA/RDH	Rec Navaid	Navigation Specification
DF	MQ560	Y	-	-	-	-	-	-	-	RNP 1
DF	MQ420	-	-	-	L	+3000	-270	-	-	RNP 1
TF	LATVI	-	008°(014.9°)	3.7	-	+FL100	-	-	-	RNP 1

SID instruction: MQ560 – MQ420 (3000 ft or above, Max IAS 270 kt) – LATVI (FL100 or above)

**MOVIS 1K**

Path Desc	Waypoint Identifier	Fly-over	Course °M(°T)	Dist (NM)	Turn Dir	Altitude	Speed	VPA/RDH	Rec Navaid	Navigation Specification
DF	MQ560	Y	-	-	-	-	-	-	-	RNP 1
DF	MQ410	-	-	-	L	+5000	-270	-	-	RNP 1
TF	MOVIS	-	345°(352.0°)	15.3	-	+FL100	-	-	-	RNP 1

SID instruction: MQ560 – MQ410 (5000 ft or above, Max IAS 270 kt) – MOVIS (FL100 or above)

**TILSA 1K**

Path Desc	Waypoint Identifier	Fly-over	Course °M(°T)	Dist (NM)	Turn Dir	Altitude	Speed	VPA/RDH	Rec Navaid	Navigation Specification
DF	MQ560	Y	-	-	-	-	-	-	-	RNP 1
DF	TILSA	-	-	-	R	+FL100	-	-	-	RNP 1

SID instruction: MQ560 – TILSA (FL100 or above)