

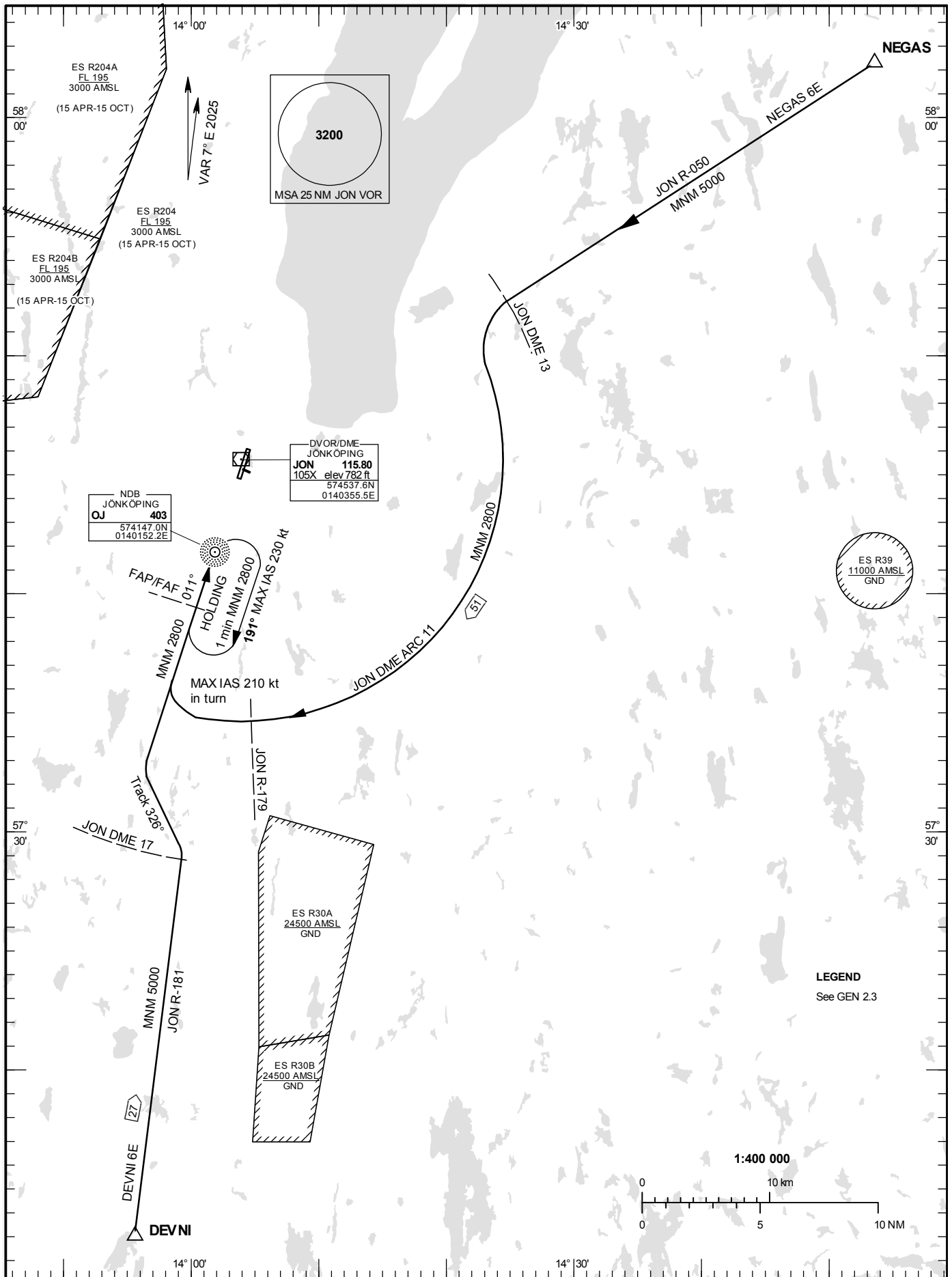
STANDARD INSTRUMENT  
ARRIVAL CHART (STAR) -  
ICAO

HGT and ALT in ft  
BRG are MAG  
TA 5000 ft AMSL

JÖNKÖPING TOWER 118.255

RWY 01

DEVNI 6E, NEGAS 6E



## ARRIVAL (STAR) RWY 01

### REMARK

Descent to minimum altitude for an arrival route must not be initiated until an ATC clearance to this altitude or an approach clearance has been received.

### DEVNI SIX ECHO ARRIVAL (DEVNI 6E)

At DEVNI intercept JON R-181, not below 5000 ft until JON DME 17. At JON DME 17 turn left to track 326° to intercept LOC SGJ, not below 2800 ft until FAP/FAF.

### NEGAS SIX ECHO ARRIVAL (NEGAS 6E)

After NEGAS intercept JON R-050 and proceed to JON DME 13, not below 5000 ft. Turn left and proceed on JON DME ARC 11, not below 2800 ft.  
At JON R-179 turn right (MAX IAS 210 kt in turn) to intercept LOC SGJ, not below 2800 ft until FAF/FAF.