

3.3 Andra flygvägar

FRA Connecting Routes.

1 Startande/landande trafik från/till flygplatser inom Stockholm TMA laterala gränser.

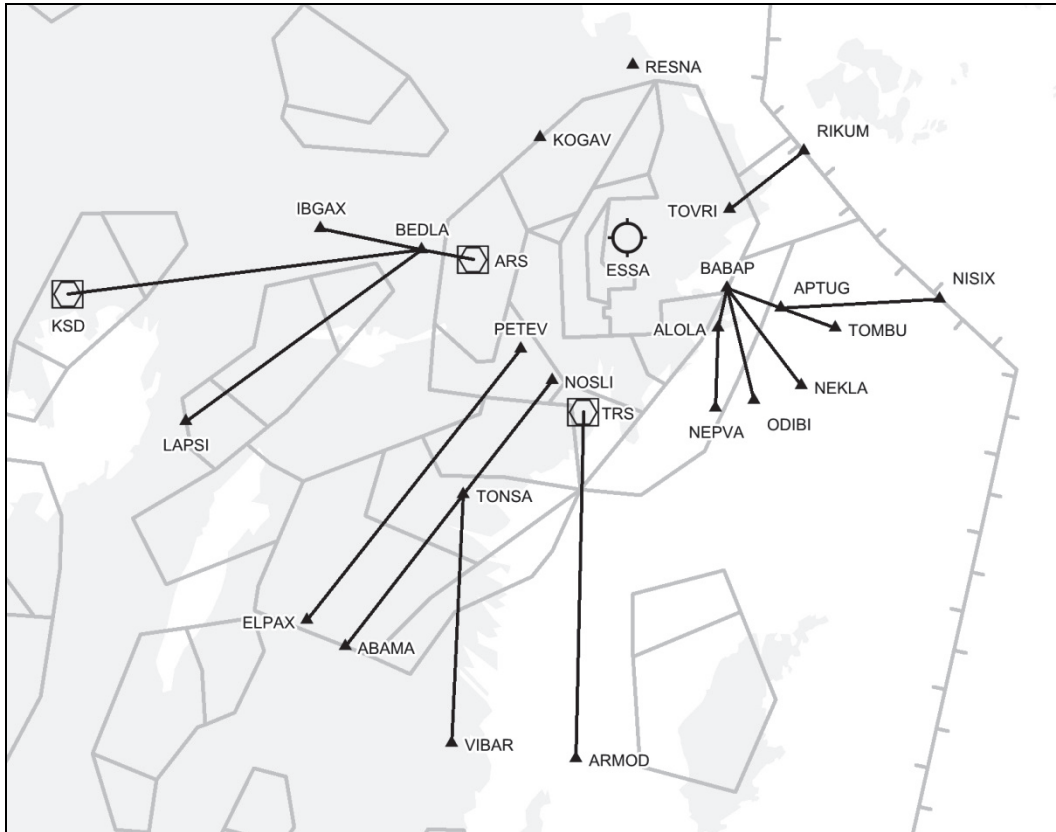
1.1 Startande trafik från ESSA

3.3 Other routes

FRA Connecting Routes.

1 Departing/arriving traffic from/to aerodromes within the lateral borders of Stockholm TMA.

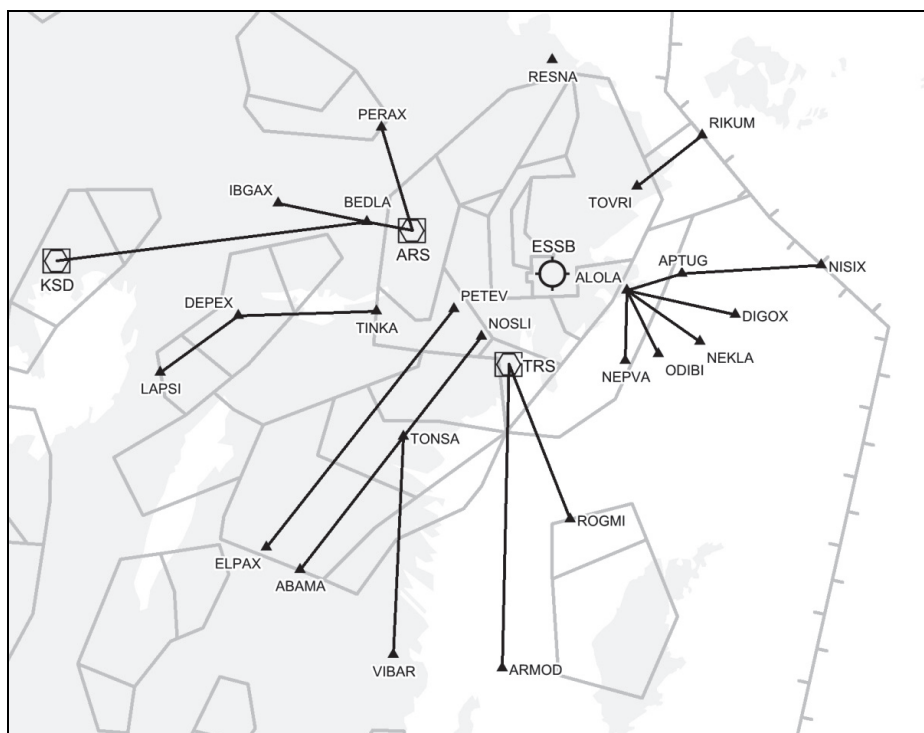
1.1 Departing traffic from ESSA



ESSA SID Final Waypoint	ESSA FRA Departure Connecting Point	Flight Plan
RESNA	RESNA	RESNA-DCT
TOVRI	RIKUM	TOVRI-N851-RIKUM
BABAP Note: For traffic towards EKDK, EDWW, EDUU FIR/UIR flight plan BABAP-T316-VSB-DCT-KAL-DCT	NISIX	BABAP-P607-APTUG-M851-NISIX
	TOMBU	BABAP-P607-TOMBU-DCT
	NEKLA	BABAP-P156-NEKLA-DCT
	ODIBI	BABAP-N5-ODIBI-DCT
	NEPVA	BABAP-T316-NEPVA-DCT
TRS	ARMOD	TRS-M607-ARMOD-DCT
NOSLI	ABAMA	NOSLI-N850-ABAMA-DCT
	VIBAR	NOSLI-N850-TONSA-L87-VIBAR-DCT
PETEV	ELPAX	PETEV-N872-ELPAX-DCT
ARS	LAPSI	ARS-N623-BEDLA-N866-LAPSI-DCT
	IBGAX	ARS-N623-IBGAX-DCT (not avbl for tfc via ENOS 1 sector)
	KSD	ARS-N623-BEDLA-P609-KSD-DCT
KOGAV	KOGAV	KOGAV-DCT

1.2 Startande trafik från ESSB

1.2 Departing traffic from ESSB



ESSB SID Final Waypoint	ESSB FRA Departure Connecting Point	Flight Plan
RESNA	RESNA	RESNA-DCT
TOVRI	RIKUM	TOVRI-N851-RIKUM
ALOLA Note: For traffic towards EKDK, EDWW, EDUU FIR/UIR flight plan ALOLA-T316-VSB-DCT-KAL-DCT	NISIX	ALOLA-M851-NISIX
	DIGOX	ALOLA-M92-DIGOX-DCT
	NEKLA	ALOLA-Z540-NEKLA-DCT
	ODIBI	ALOLA-T365-ODIBI-DCT
	NEPVA	ALOLA-T316-NEPVA-DCT
TRS	ARMOD	TRS-M607-ARMOD-DCT
	ROGMI	TRS-M996-ROGMI-DCT
NOSLI	ABAMA	NOSLI-N850-ABAMA-DCT
	VIBAR	NOSLI-N850-TONSA-L87-VIBAR-DCT
PETEV	ELPAX	PETEV-N872-ELPAX-DCT
TINKA	LAPSI	TINKA-Y42-DEPEX-N866-LAPSI-DCT
ARS	IBGAX	ARS-N623-IBGAX-DCT (not avbl. for tfc via ENOS 1 sector)
	PERAX	ARS-PERAX-DCT
	KSD	ARS-N623-BEDLA-P609-KSD-DCT

1.3 Startande trafik från övriga flygplatser inom Stockholm TMA laterala gränser.

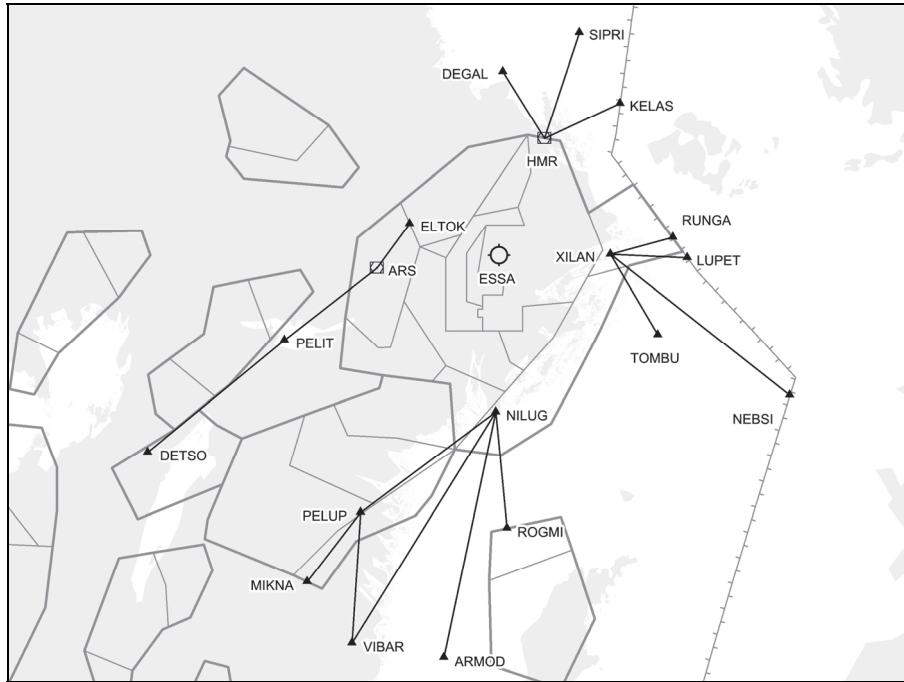
Färdplanera från flygplatsen direkt till SID Final Waypoint i Stockholm TMA (RESNA, TOVRI, BABAP, ALOLA, TRS, NOSLI, PETEV, TINKA, ARS eller KOGAV) och sedan enligt beskrivningen i m.o.m 1.1 eller 1.2.

1.3 Departing traffic from other aerodromes within the lateral borders of Stockholm TMA.

Flight plan from the aerodromes direct to one of the SID Final Waypoints in Stockholm TMA (RESNA, TOVRI, BABAP, ALOLA, TRS, NOSLI, PETEV, TINKA, ARS or KOGAV) and then according to description in para 1.1 or 1.2.

1.4 Landande trafik till ESSA

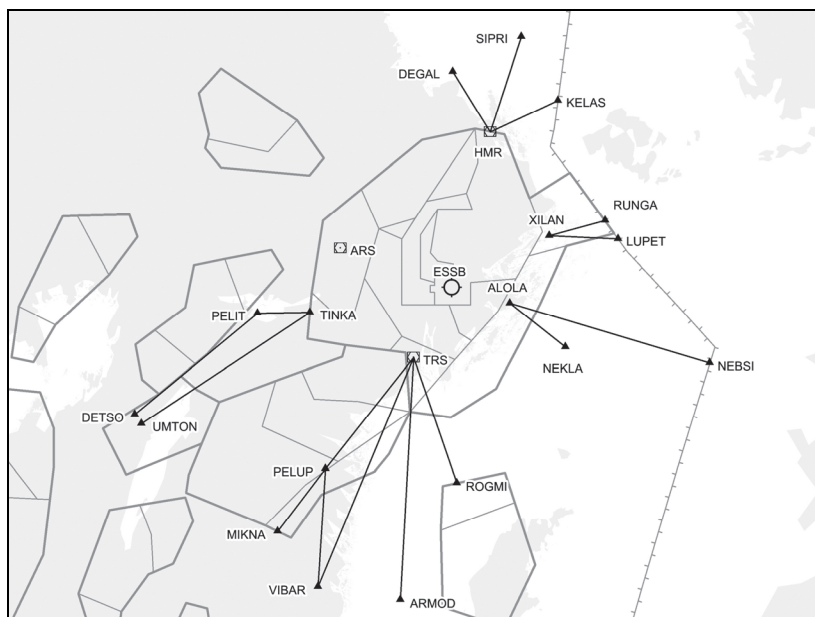
1.4 Arriving traffic to ESSA



ESSA Arrival Connecting Point	ESSA STAR Initial Waypoint	Flight Plan
DEGAL	HMR	DCT to DEGAL-L870-HMR
SIPRI (Compulsory for dep ESNN)		DCT to SIPRI-N5/T31/T316-HMR
KELAS		KELAS-L87-HMR
RUNGA	XILAN	RUNGA-N872-XILAN
LUPET		LUPET-L77-XILAN
NEBSI		NEBSI-L870-XILAN
TOMBU		DCT TOMBU-N616-XILAN
ROGMI	NILUG	DCT to ROGMI-Z229-NILUG
ARMÖD		DCT to ARMÖD-Z228-NILUG
VIBAR		DCT to VIBAR-Z227-NILUG or DCT VIBAR-L87-PELUP-Z226-NILUG
MİKNA		DCT to MİKNA-N851-PELUP-Z226-NILUG
DETSO	ELTOK	DCT to DETSO-N873-ARS-T317-ELTOK
ELTOK if the trajectory is north of PELIT		DCT to ELTOK

1.5 Landande trafik till ESSB

1.5 Arriving traffic to ESSB.



ESSB Arrival Connecting Point	ESSB STAR Initial Waypoint/Waypoint	Flight Plan
DEGAL	HMR	DCT to DEGAL-L870-HMR
SIPRI (Compulsory for dep ESNN)		DCT to SIPRI-N5/T31/T316-HMR
KELAS		KELAS-L87-HMR
RUNGA	XILAN	RUNGA-N872-XILAN
LUPET		LUPET-L77-XILAN
NEBSI	ALOLA	NEBSI-M92-ALOLA
NEKLA		DCT to NEKLA-Z540-ALOLA
MIKNA	TRS	DCT to MIKNA-N851-TRS
VIBAR		DCT to VIBAR-Z330-TRS or DCT VIBAR-L87-PELUP-N851-TRS
ARMOD		DCT to ARMOD-M607-TRS
ROGMI		DCT to ROGMI-M996-TRS
DETSO	TINKA	DCT to DETSO-N873-PELIT-Y42-TINKA
UMTON		DCT to UMTON-Y430-TINKA
ARS if the trajectory is north of TINKA	ARS	DCT to ARS

1.6 Landande trafik till övriga flygplatser inom Stockholm TMA laterala gränser.

1.6 Arriving traffic to other aerodromes within the lateral borders of Stockholm TMA.

Färdplanera enligt beskrivningen i ENR 1.3 från en Stockholm TMA FRA Arrival Connecting Point till en STAR Initial Waypoint. Därefter direkt till flygplatsen.

Flight plan, as described in ENR 1.3 from a Stockholm TMA FRA Arrival Connecting Point to a STAR Initial Waypoint. Then flight plan direct to the destination.

Anm. Starter ESNN med destination inom Stockholm TMA skall färdplanera SIPRI – HMR.

Note. Departure ESNN with destination within Stockholm TMA shall flight plan SIPRI – HMR.

2 Startande/landande trafik från/till flygplatser inom Östgöta TMA laterala gränser

2.1 Startande trafik:

Trafik från flygplatser inom Östgöta TMA laterala gränser skall när så är rimligt färdplanera via:

- **ABAMA – N850 – NEMBA – DCT or TONSA – N850 – NEMBA – DCT (for dep ESKN) or**
- **TONSA – L87 – VIBAR – DCT (for dep ESKN) or**
- **ELPAX – N872 – TOKSI – DCT or**
- **ELPAX – Z703 – UMIKA – DCT**

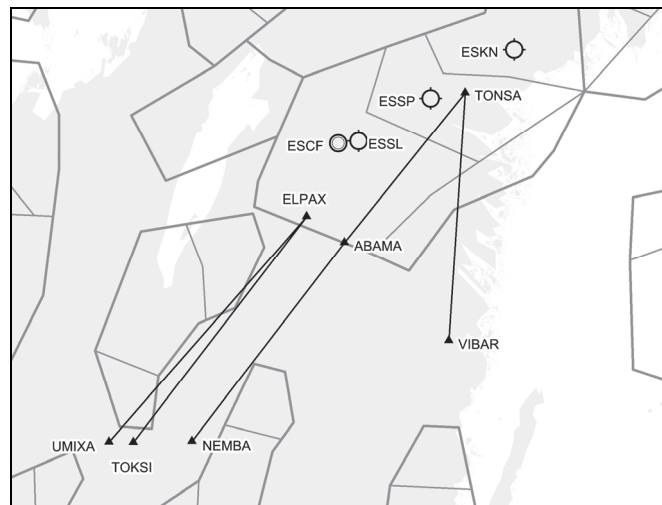
För övriga starter är det tillåtet att färdplanera direkt.

2 Departing/arriving traffic from/to aerodromes within the lateral borders of Östgöta TMA

2.1 Departing traffic:

Traffic from aerodromes within the lateral borders of Östgöta TMA shall whenever reasonable flight plan via:

Remaining departures are allowed to flight plan DCT after departure.



2.2 Landande trafik:

Trafik till flygplatser inom Östgöta TMA laterala gränser skall när så är rimligt färdplanera via:

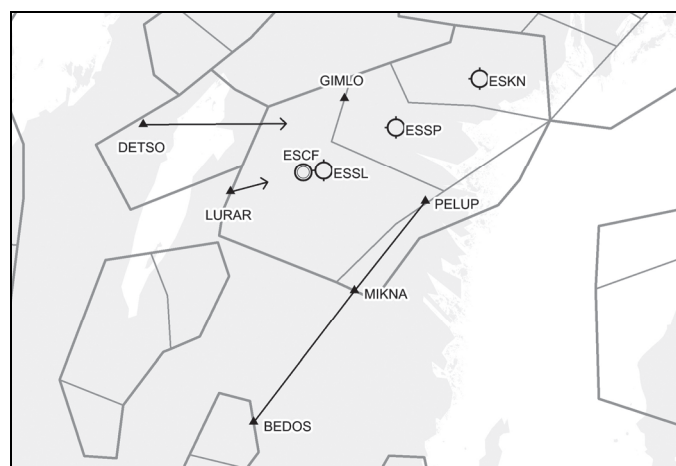
- **BEDOS – N851 – MIKNA or BEDOS – N851 – PELUP (for dest ESKN)**
- **LURAR – SC / OL / ON / GIMLO or**
- **DETSO – SC / OL / ON / GIMLO**

För övriga landningar är det tillåtet att färdplanera direkt för att ansluta på normala landningsprocedurer.

2.2 Arriving traffic:

Traffic to aerodromes within the lateral borders of Östgöta TMA shall whenever reasonable flight plan via:

Remaining arrivals are allowed to flight plan DCT to join normal arrival procedures.

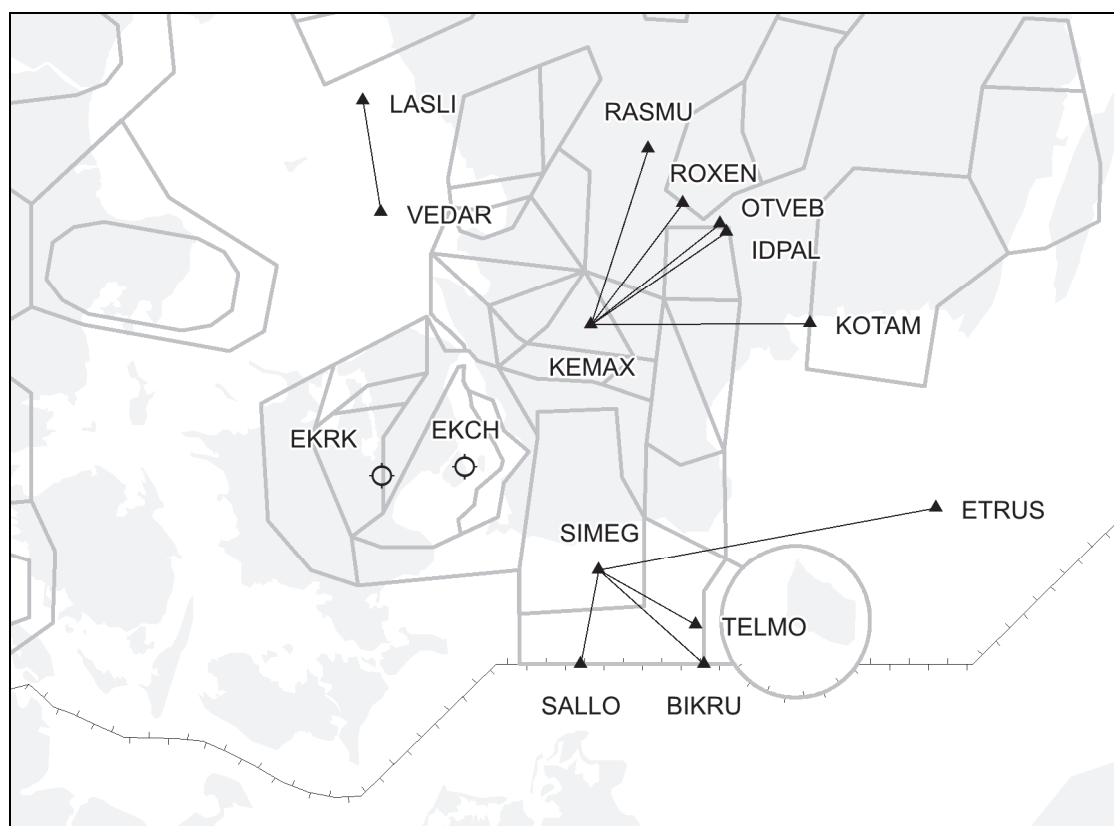


3 Startande/landande trafik från/till flygplatser inom Köpenhamn/Malmö/Halmstad TMA laterala gränser

3 Departing/arriving traffic from/to aerodromes within the lateral borders of Köpenhamn/Malmö/Halmstad TMA

3.1 Startande trafik från EKCH/EKRK

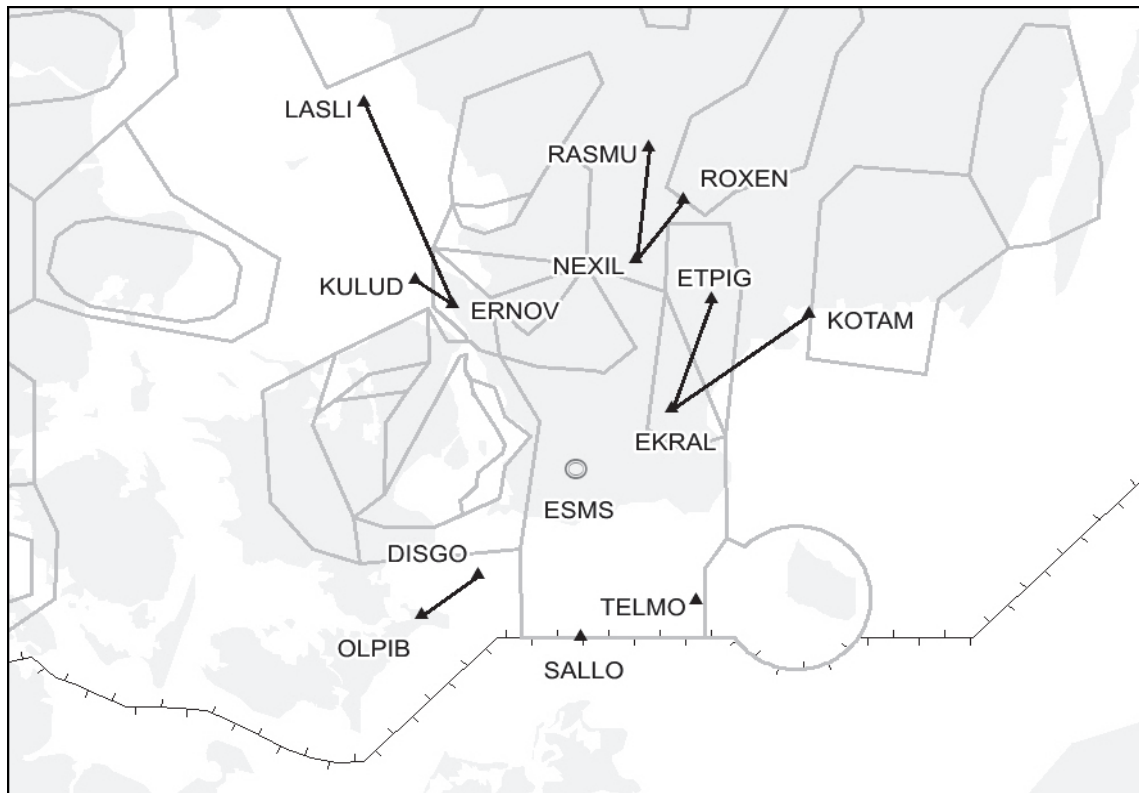
3.1 Departing traffic EKCH/EKRK



EKCH SID Final Waypoint/ EKRK Departure Route Final Waypoint	EKCH/EKRK FRA Departure Connecting Point	Flight Plan
KEMAX	KOTAM	KEMAX-Z490-KOTAM-DCT
	OTVEB	KEMAX-T408-OTVEB-DCT
	IDPAL	KEMAX-Q44-IDPAL-DCT
	ROXEN	KEMAX-N851-ROXEN-DCT
	RASMU	KEMAX-RASMU-DCT
SALLO	SALLO	SALLO
SIMEG	SALLO	SIMEG-M736-SALLO
	BIKRU	SIMEG-Z493-BIKRU
	TELMO	SIMEG-Z491-TELMO-DCT
	ETRUS	SIMEG-L987-ETRUS-DCT
VEDAR	LASLI	VEDAR-L997-LASLI-DCT

3.2 Startande trafik från ESMS

3.2 Departing traffic ESMS



ESMS SID Final Waypoint	ESMS FRA Departure Connecting Point	Flight Plan
NEXIL	ROXEN	NEXIL-N851-ROXEN-DCT
	RASMU	NEXIL-M736-RASMU-DCT
EKRAL	ETPIG	EKRAL-P605-ETPIG-DCT
	KOTAM	EKRAL-L990-KOTAM-DCT
TELMO	TELMO	TELMO-DCT
SALLO	SALLO	SALLO
DISGO	OLPIB	DISGO-OLPIB-DCT
ERNOV	LASLI	ERNOV-N15-LASLI-DCT
	KULUD	ERNOV-L621-KULUD-DCT

3.3 Startande trafik från ESTA

Enligt ENR 1.3.

3.4 Startande trafik från ESMT

Enligt ENR 1.3 eller VAKTA – BEDOS (om rimligt).

3.5 Startande trafik från ESMK

Enligt ENR 1.3.

3.6 Startande trafik från ESTL

Enligt ENR 1.3 eller OEM – KOTAM alternativt LB – LASLI eller LB – KULUD (om rimligt).

3.3 Departing traffic ESTA

According to ENR 1.3.

3.4 Departing traffic ESMT

According to ENR 1.3. or VAKTA – BEDOS (if suitable).

3.5 Departing traffic ESMK

According to ENR 1.3.

3.6 Departing traffic ESTL

According to ENR 1.3 or OEM – KOTAM alternative LB – LASLI or LB – KULUD (if suitable).

3.7 Landande trafik till EKCH/EKRK

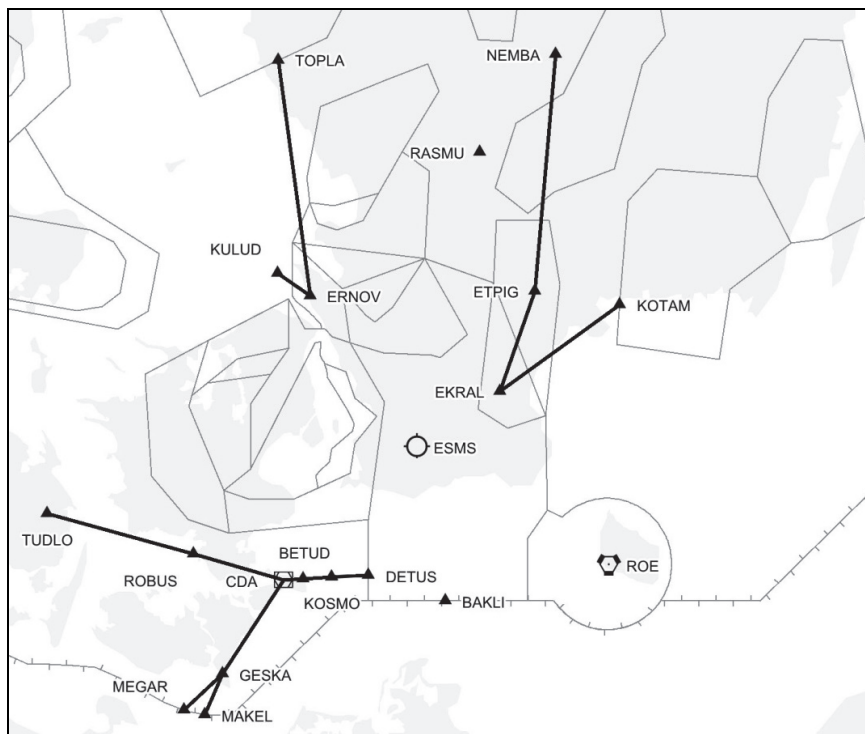
3.7 Arriving traffic to EKCH/EKRK



EKCH/EKRK Arrival Connecting Point	EKCH STAR Initial Waypoint/ EKRK Initial Arrival Waypoint	Flight Plan
TOPLA	ERNOV	DCT to TOPLA-L996-ERNOV
TOKSI		DCT to TOKSI-N872-ERNOV
JON		DCT to JON-T402-ERNOV
KOTAM	TIDVU	DCT to KOTAM-L990-EKRAL-P605-TIDVU
ROE		DCT to ROE-M743-TIDVU
BAKLI		BAKLI-Z400-TIDVU
ELVIX		DCT to ELVIX-L975-TIDVU

3.8 Landande trafik till ESMS

3.8 Arriving traffic to ESMS



ESMS Arrival Connecting Point	ESMS STAR Initial Waypoint	Flight Plan
NEMBA	EKRAL	DCT to NEMBA-N33-ETPIG-P605-EKRAL
KOTAM		DCT to KOTAM-L990-EKRAL
KULUD	ERNOV	DCT to KULUD-L621-ERNOV
TOPLA		DCT to TOPLA-L996-ERNOV
RASMU	RASMU	DCT to RASMU
ROE	ROE	DCT to ROE
BAKLI	BAKLI	BAKLI
MAKEL	DETUS	MAKEL-N851-GESKA-P605-KOSMO-L983-DETUS
TUDLO		DCT to TUDLO-L983-DETUS
MEGAR		MEGAR-P605-KOSMO-L983-DETUS (only DEP EDDH)

3.9 Landande trafik till ESTA

Direkt till TOKSI – NILEN eller TOKSI (om rimligt) annars enligt ENR 1.3.

3.10 Landande trafik till ESMT

Direkt till PELOX eller TOKSI – PELOX (om rimligt) annars enligt ENR 1.3.

3.11 Landande trafik till ESMK

Direkt till GELMA - OEM (om rimligt) annars enligt ENR 1.3.

3.12 Landande trafik till ESTL

Direkt LB, NEXIL eller MAXUM (om rimligt) annars enligt ENR 1.3.

3.9 Arriving traffic ESTA

DCT to TOKSI – NILEN or TOKSI (if suitable) otherwise according to ENR 1.3.

3.10 Arriving traffic ESMT

DCT to PELOX or TOKSI – PELOX (if suitable) otherwise according to ENR 1.3.

3.11 Arriving traffic ESMK

DCT to GELMA – OEM (if suitable) otherwise according to ENR 1.3.

3.12 Arriving traffic to ESTL

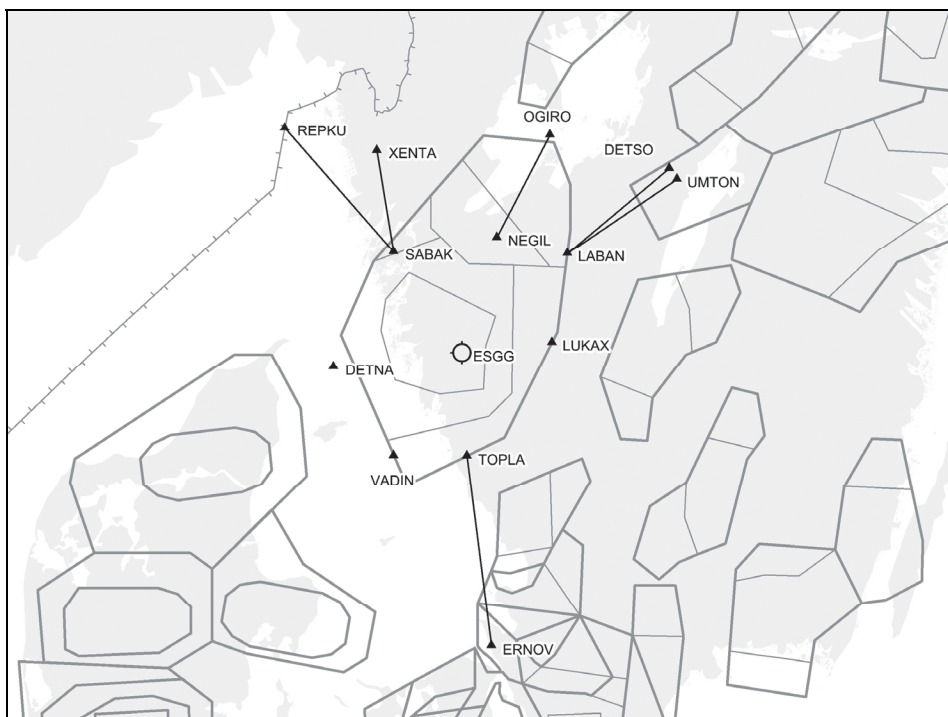
DCT LB, NEXIL or MAXUM (if suitable) otherwise according to ENR 1.3.

4 Startande/landande trafik från/till flygplatser inom Göteborg TMA laterala gränser

4 Departing/arriving traffic from/to aerodromes within the lateral borders of Göteborg TMA

4.1 Startande trafik från ESGG

4.1 Departing traffic ESGG



ESGG SID Final Waypoint	ESGG FRA Departure Connecting Point	Flight Plan
NEGIL	OGIRO	NEGIL-M852-OGIRO-DCT
LABAN	DETSO	LABAN-N873-DETSO-DCT
	UMTON (only for destination ESSB)	LABAN-Y430-UMTON-DCT
LUKAX	LUKAX	LUKAX-DCT
TOPLA	ERNOV	TOPLA-L996-ERNOV-DCT
	TOPLA (if the trajectory is east of TOPLA-ERNOV)	TOPLA-DCT
VADIN	VADIN	VADIN-DCT
DETNA	DETNA	DETNA-DCT
SABAK	REPKU	SABAK-L617-REPKU
	XENTA	SABAK-L997-XENTA-DCT

4.2 Startande trafik från övriga flygplatser inom Göteborg TMA laterala gränser

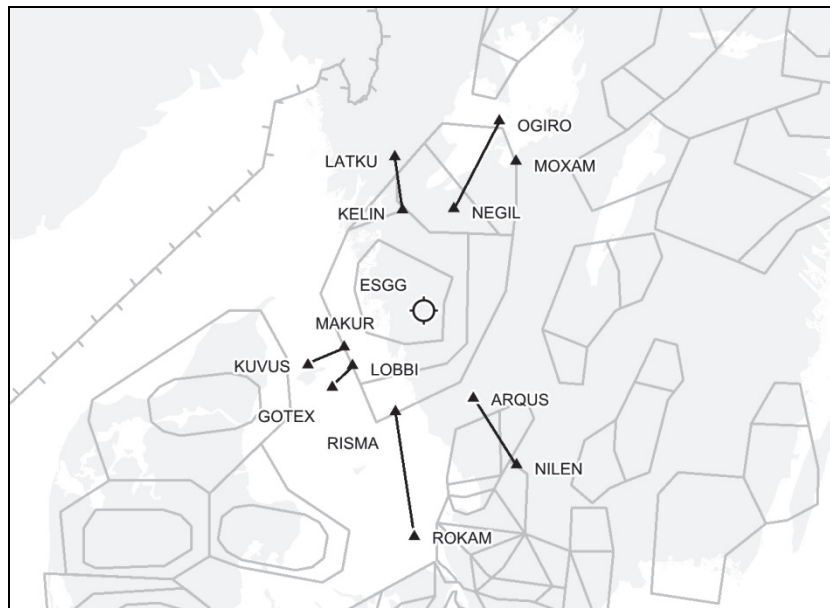
4.2 Departing traffic from other aerodromes within the lateral borders of Göteborg TMA

Färdplanera direkt från flygplatsen till NEGIL, LABAN, LUKAX, TOPLA, VADIN, DETNA eller SABAK och sedan enligt beskrivningen i para 4.1.

Flight plan from the aerodrome direct to NEGIL, LABAN, LUKAX, TOPLA, VADIN, DETNA or SABAK and then according to para 4.1 above.

4.3 Landande trafik till ESGG

4.3 Arriving traffic to ESGG



ESGG Arrival Connecting Point	ESGG STAR Initial Waypoint	Flight Plan
OGIRO	NEGIL	DCT to OGIRO-M852-NEGIL
MOXAM	MOXAM	DCT to MOXAM
NILEN	ARQUS	DCT to NILEN-L617-ARQUS
RISMA	RISMA	DCT to RISMA
ROKAM		DCT to ROKAM-L997-RISMA (compulsory for traffic via EKDK C/UC, EKDK E, EKDK L and EKDK V/UV sectors)
GOTEX	LOBBI	DCT to GOTEX-N873-LOBBI
KUVUS	MAKUR	DCT to KUVUS-N607-MAKUR
LATKU	KELIN	DCT to LATKU-L996- KELIN

4.4 Landande trafik på övriga flygplatser inom Göteborg TMA laterala gränser

Färdplanera från en valfri FRA Arrival Connecting Point enligt beskrivningen i para 4.3 direkt till flygplatsen.

4.4 Arriving traffic to other aerodromes within the lateral borders of Göteborg TMA

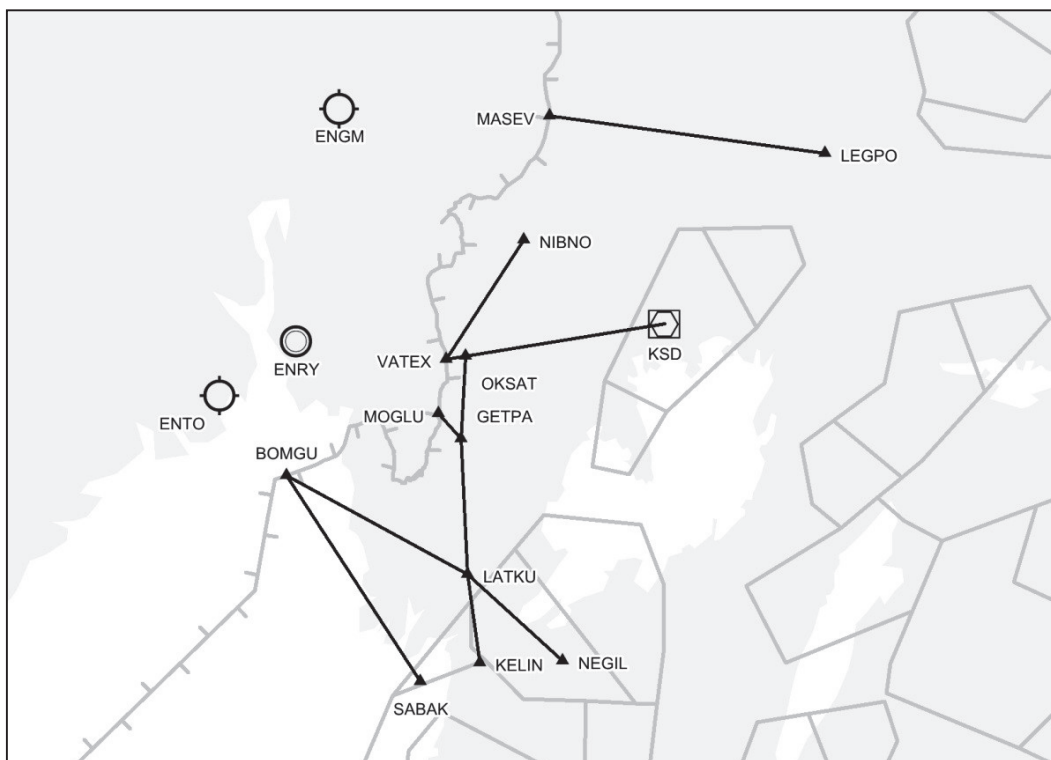
Flight plan from an optional FRA Arrival Connecting Point described in para 4.3 direct to the destination.

5 Startande/landande trafik från/till flygplatser inom Oslo/Farris TMA laterala gränser

5.1 Startande trafik från flygplatser inom Oslo eller Farris TMA

5 Departing/arriving traffic from/to aerodromes within the lateral borders of Oslo/Farris TMA

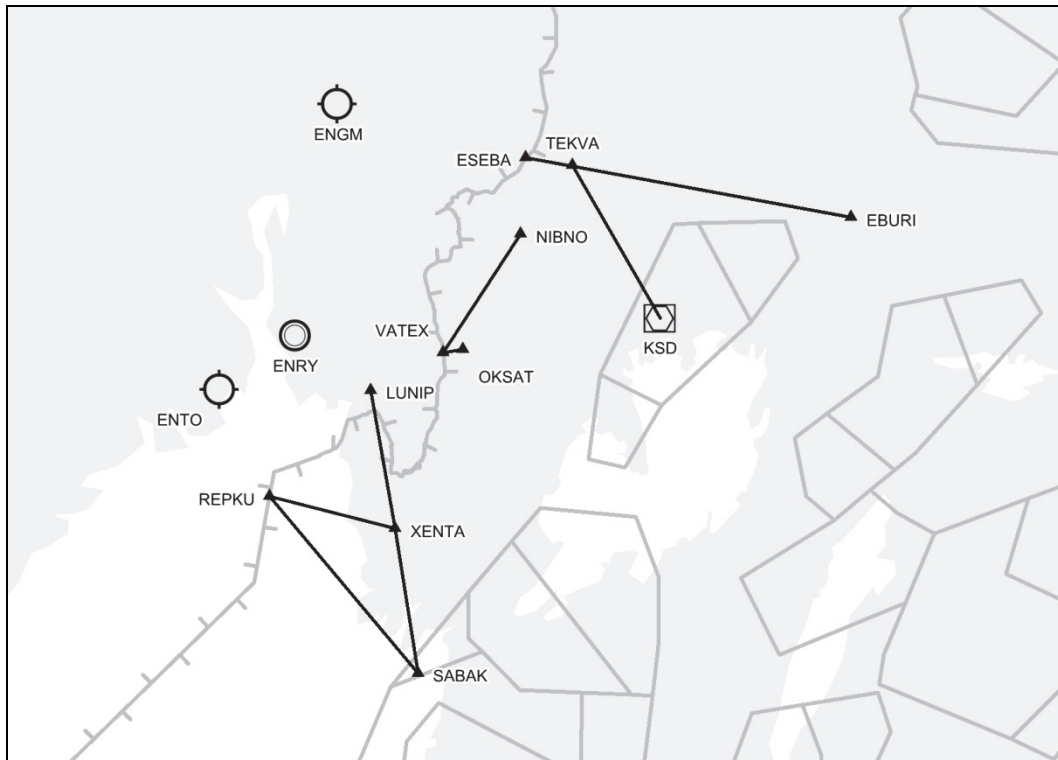
5.1 Departures from aerodromes within Oslo or Farris TMA.



FRA Horizontal Entry Point/SID Final Waypoint	FRA Departure Connecting Point	Flight Plan
MASEV	LEGPO	MASEV-Z183-LEGPO-DCT if planned FRA Horizontal Exit Point or FRA Connecting Point is south of LEGPO
	MASEV	MASEV-DCT if planned FRA Horizontal Exit Point or FRA Connecting Point is north of LEGPO
VATEX	NIBNO	VATEX-Z166-NIBNO-DCT
	KSD	VATEX-P609-KSD-DCT
OKSAT	NEGIL	OKSAT-L996-GETPA-L727/L996-LATKU-L727-NEGIL-DCT
	KELIN	OKSAT-L996-GETPA-L727/L996-LATKU-L996-KELIN-DCT
MOGLU	NEGIL	MOGLU-L727-GETPA-L727/L996-LATKU-L727-NEGIL-DCT
	KELIN	MOGLU-L727-GETPA-L727/L996-LATKU-L996-KELIN-DCT
BOMGU	SABAK	BOMGU-Y440-SABAK-DCT
	NEGIL	BOMGU-Z132-LATKU-L727-NEGIL-DCT
	KELIN	BOMGU-Z132-LATKU-L996-KELIN-DCT

5.2 Landande trafik till flygplatser inom Oslo eller Farris TMA.

5.2 Arriving traffic to aerodromes within the lateral borders of Oslo/Farris TMA



FRA Arrival Connecting Point	FRA Horizontal Exit Point	Flight Plan
SABAK	LUNIP	DCT to SABAK-L997-LUNIP
	REPKU	DCT to SABAK-L617-REPKU
		DCT to SABAK-L997-XENTA-Y43-REPKU
EBURI	ESEBA	DCT to EBURI-N623-TEKVA-N623/Z259-ESEBA
KSD		DCT to KSD-Z259-TEKVA-N623/Z259-ESEBA
NIBNO	VATEX	DCT to NIBNO-Z166-VATEX
OKSAT		DCT to OKSAT-P609-VATEX