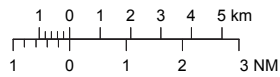


VISUAL APPROACH CHART - ICAO

1:250000



AD ELEV 139 FEET

ELEV and ALT in ft
HGT in ft above AD ELEV

TA 5000 AMSL

LJUNGBYHED TOWER 130.705

129.705

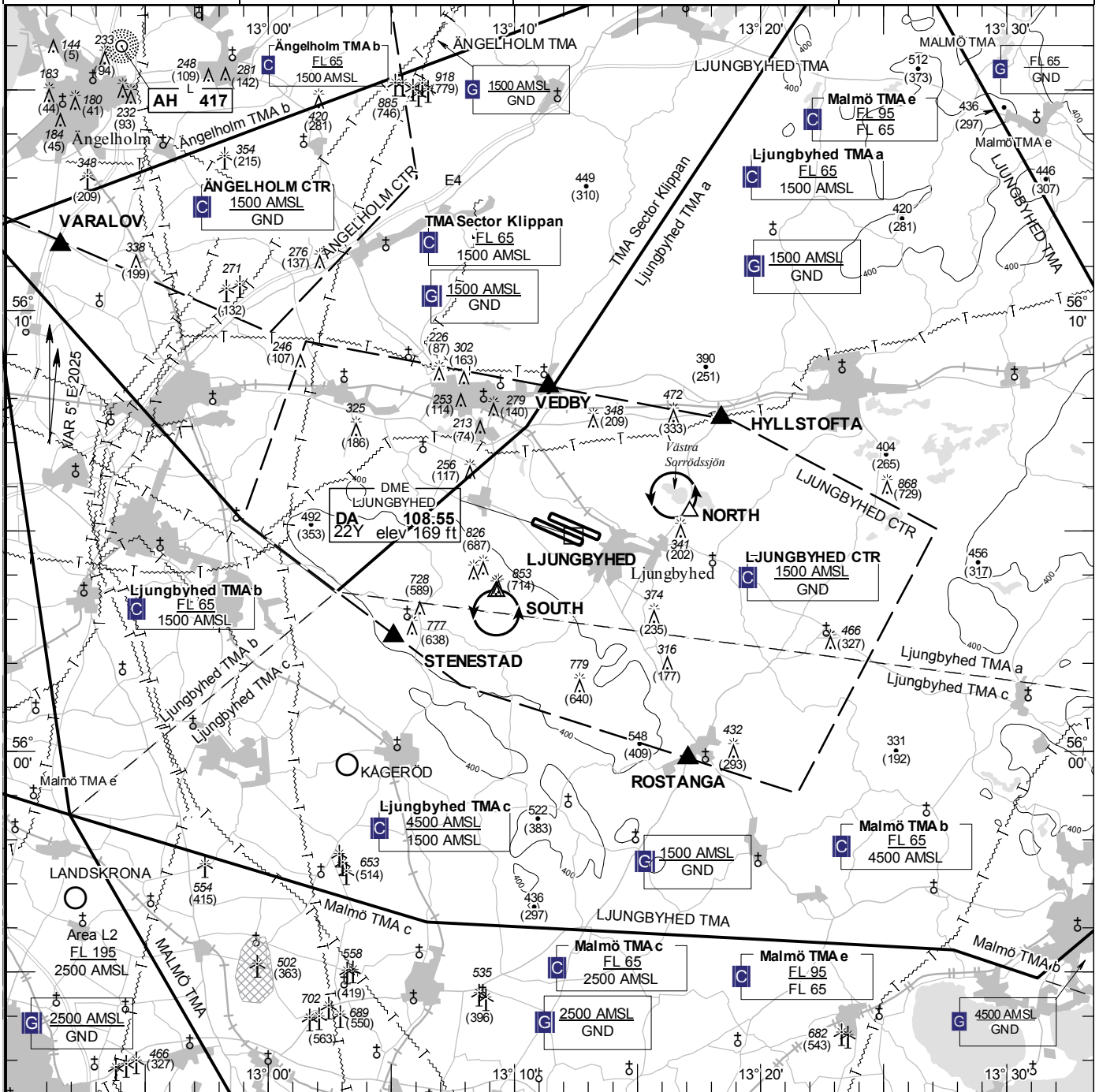
LJUNGBYHED GROUND 121.655

LJUNGBYHED APPROACH 129.555

LJUNGBYHED ATIS 132.755

AD 2 ESTL 6-1

LJUNGBYHED SWEDEN



Communication failure

- 1 SQUAWK 7600
- 2 Enter CTR via HYLLSTOFTA – Holding NORTH or via STENESTAD-Holding SOUTH at or below 1200 ft AMSL to traffic circuit. Transmit blind your intentions.
- 3 Flash LDG-lights and watch TWR for optical signals. From holding NORTH proceed overhead the field and join right hand traffic circuit RWY 11R or left hand traffic circuit RWY 29L. From holding SOUTH proceed for right hand traffic circuit RWY 11R or left hand traffic circuit RWY 29L.

RWY	THR	PAPI
NR	ELEV	(MEHT)
11L	126 ft	NIL
29R	139 ft	NIL
11R	123 ft	APAPI Left/3.00°
29L	136.1 ft	Left/3.00° (57 ft)

Entry / exit point

VEDBY	560816N 0131123E
HYLLSTOFTA	560733N 0131824E
ROSTANGA	555950N 0131703E
STENESTAD	560236N 0130505E

Holding

- NORTH:** Hold over Västra Sorrhödsjön, north west of point 560525N 0131707E
- SOUTH:** Hold south of the mast, south of point 560336N 0130915E

Legend

See GEN 2.3

Remark

Right hand traffic circuit when RWY 29L/29R are in use.

Sector KLIPPAN:
ATC provider, see ENR 2.1.

LFV

CHANGE: VOR/DME LJU withdrawn, VAR

AIRAC AMDT 6/2024 **28 NOV 2024**