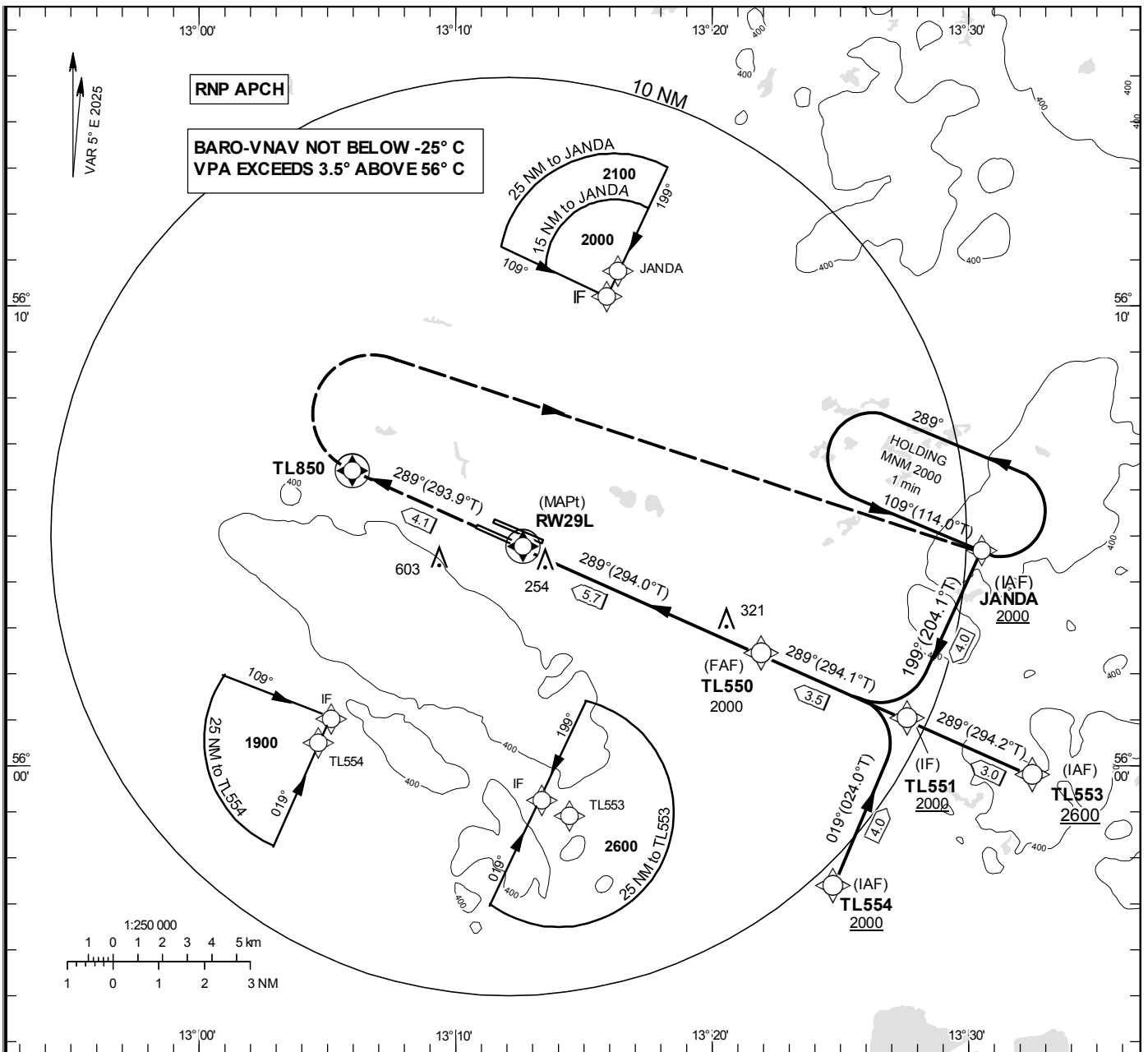


**INSTRUMENT APPROACH CHART – ICAO**

**THR ELEV 136.1 ft, AD ELEV 139 ft**  
 OCH are related to THR.  
 BRG are MAG (True).  
 ALT, HGT and ELEV in ft.

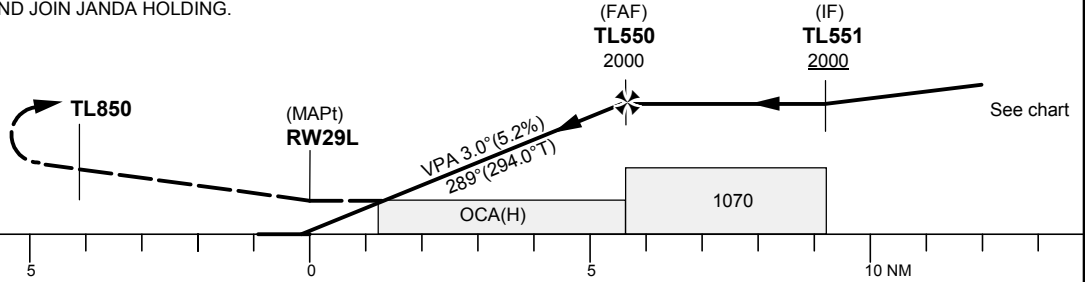
LJUNGBYHED TOWER 130.705  
 LJUNGBYHED GROUND 121.655  
 LJUNGBYHED APPROACH 129.555

**RNP RWY 29L (Cat A/B)**  
 EGNOS Ch 74642 E29A



TA 5000 ft AMSL RDH 50 ft

CLIMB TO TL850.  
 AT TL850 TURN RIGHT TO JANDA  
 CLIMBING TO 2000 AND JOIN JANDA HOLDING.



Cat of ACFT	OCA (H)		Final approach Dist to RW29L	Distance FAF-MAPt 5.7 NM				
	A	B		2	3	4	5	
LPV	385 (249)	396 (260)	ALT	820	1140	1460	1780	
LNAV/VNAV	439 (303)	452 (316)	GS	kt	80	100	120	140
LNAV	580 (450)		Rate of descent	ft/min	425	530	635	745

## RNP RWY 29L via JANDA

Path Term	Waypoint Identifier	Fly-over	Course °M(°T)	Dist (NM)	Turn Dir	Rest Alts (ft AMSL)	Speed Limits (kt)	VPA/RDH (°/ft)	Rec Navaid	Navigation Specification
IF	JANDA	-	-	-	-	+2000	-	-	-	RNP APCH
TF	TL551	-	199°(204.1°)	4.0	-	-	-	-	-	RNP APCH

## RNP RWY 29L via TL553

Path Term	Waypoint Identifier	Fly-over	Course °M(°T)	Dist (NM)	Turn Dir	Rest Alts (ft AMSL)	Speed Limits (kt)	VPA/RDH (°/ft)	Rec Navaid	Navigation Specification
IF	TL553	-	-	-	-	+2600	-	-	-	RNP APCH
TF	TL551	-	289°(294.2°)	3.0	-	-	-	-	-	RNP APCH

## RNP RWY 29L via TL554

Path Term	Waypoint Identifier	Fly-over	Course °M(°T)	Dist (NM)	Turn Dir	Rest Alts (ft AMSL)	Speed Limits (kt)	VPA/RDH (°/ft)	Rec Navaid	Navigation Specification
IF	TL554	-	-	-	-	+2000	-	-	-	RNP APCH
TF	TL551	-	019°(024.0°)	4.0	-	-	-	-	-	RNP APCH

Path Desc	Waypoint Identifier	Fly-over	Course °M(°T)	Dist (NM)	Turn Dir	Altitude	Speed	VPA/RDH	Rec Navaid	Navigation Specification
IF	TL551	-	-	-	-	+2000	-	-	-	RNP APCH
TF	TL550	-	289°(294.1°)	3.5	-	@2000	-	-	-	RNP APCH
TF	RW29L	Y	289°(294.0°)	5.7	-	@186	-	-3.0/50	-	RNP APCH
TF	TL850	Y	289°(293.9°)	4.1	-	-	-	-	-	RNP APCH
DF	JANDA	-	-	-	R	+2000	-	-	-	RNP APCH

## Holding JANDA

Path Term	Waypoint Identifier	Fly-over	Course °M(°T)	Dist (NM)	Turn Dir	Rest Alts (ft AMSL)	Speed Limits (kt)	VPA/RDH (°/ft)	Rec Navaid	Navigation Specification
HM	JANDA	Y	109°(114.0°)	-	L	+2000	-	-	-	RNP 1

## FAS Data Block

## RNP RWY 29L

## Input data

Operation Type	0
SBAS Provider	1 (EGNOS)
Airport Identifier	ESTL
Runway	29
Runway Letter	3 (Left)
Approach Performance Designator	0
Route Indicator	
Reference Path Data Selector	0
Reference Path Identifier	E29A
LTP/FTP Latitude	560445.4630N
LTP/FTP Longitude	0131237.3520E
LTP/FTP Ellipsoidal Height (metres)	77.9
FPAP Latitude	560511.4500N
Delta FPAP Latitude (seconds)	25.9870
FPAP Longitude	0131052.3610E
Delta FPAP Longitude (seconds)	-104.9910
Threshold Crossing Height	50.0
TCH Units Selector	0 (feet)
Glidepath Angle (degrees)	3.00
Course Width (metres)	105.00
Length Offset (metres)	0
HAL (metres)	40.0
VAL (metres)	50.0

## Output data

Data Block	10 0C 14 13 05 DD 00 00 01 39 32 05 2E 0E 11 18 D0 55 AB 05 0B 17 06 CB 00 C2 CB FC F4 01 2C 01 64 00 C8 FA BC FC D0 D0
Calculated CRC Value	BCFCD0D0

## Required Additional Data

ICAO Code	ES
LTP/FTP Orthometric Height (metres)	41.5