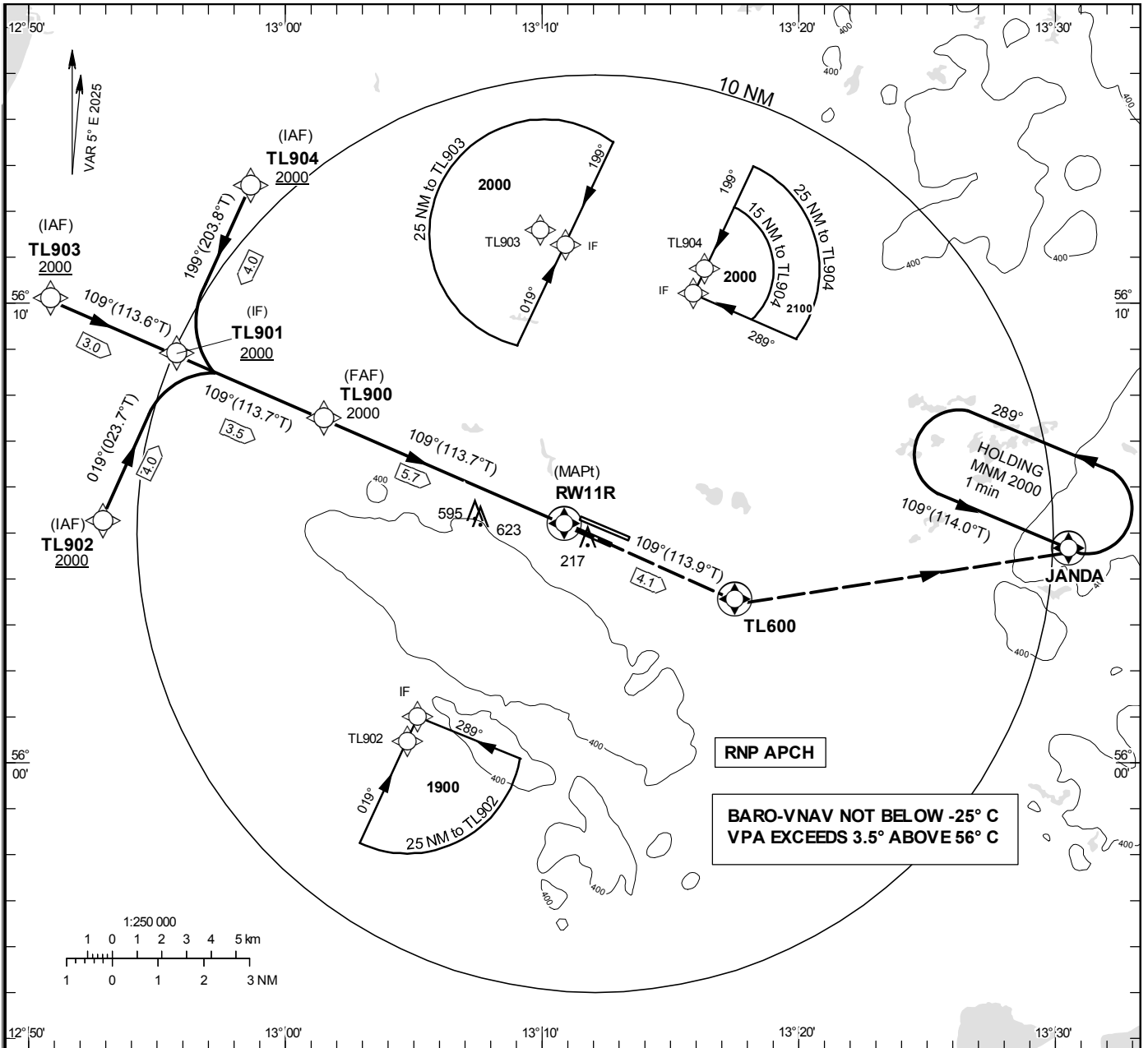


INSTRUMENT APPROACH CHART – ICAO
THR ELEV 123 ft, AD ELEV 139 ft
 OCH are related to THR.
 BRG are MAG (True).
 ALT, HGT and ELEV in ft.

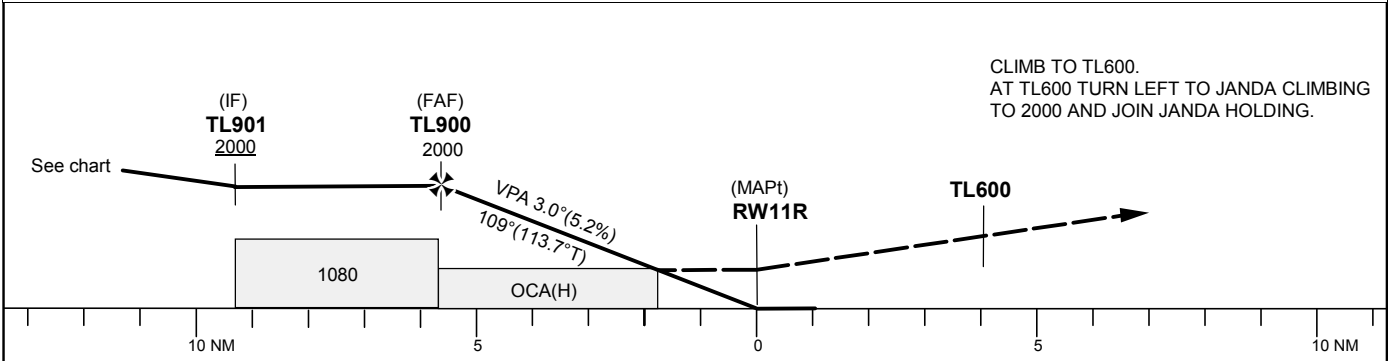
LJUNGBYHED TOWER	130.705
LJUNGBYHED GROUND	121.655
LJUNGBYHED APPROACH	129.555

RNP RWY 11R (Cat A/B)

EGNOS Ch 92296 E11A



TA 5000 ft AMSL RDH 50 ft



CLIMB TO TL600.
 AT TL600 TURN LEFT TO JANDA CLIMBING TO 2000 AND JOIN JANDA HOLDING.

Cat of ACFT	OCA (H)		Final approach Dist to RW11R	Distance FAF-MAPt 5.7 NM				
	A	B		5	4	3	2	
LPV	348 (225)	360 (237)	ALT	1770	1450	1130	810	
LNAV/VNAV	673 (550)	678 (555)	GS	kt	80	100	120	140
LNAV	740 (620)		Rate of descent	ft/min	425	530	635	745

RNP RWY 11R via TL902

Path Term	Waypoint Identifier	Fly-over	Course °M(°T)	Dist (NM)	Turn Dir	Rest Alts (ft AMSL)	Speed Limits (kt)	VPA/RDH (°/ft)	Rec Navaid	Navigation Specification
IF	TL902	-	-	-	-	+2000	-	-	-	RNP APCH
TF	TL901	-	019°(023.7°)	4.0	-	-	-	-	-	RNP APCH

RNP RWY 11R via TL903

Path Term	Waypoint Identifier	Fly-over	Course °M(°T)	Dist (NM)	Turn Dir	Rest Alts (ft AMSL)	Speed Limits (kt)	VPA/RDH (°/ft)	Rec Navaid	Navigation Specification
IF	TL903	-	-	-	-	+2000	-	-	-	RNP APCH
TF	TL901	-	109°(113.6°)	3.0	-	-	-	-	-	RNP APCH

RNP RWY 11R via TL904

Path Term	Waypoint Identifier	Fly-over	Course °M(°T)	Dist (NM)	Turn Dir	Rest Alts (ft AMSL)	Speed Limits (kt)	VPA/RDH (°/ft)	Rec Navaid	Navigation Specification
IF	TL904	-	-	-	-	+2000	-	-	-	RNP APCH
TF	TL901	-	199°(203.8°)	4.0	-	-	-	-	-	RNP APCH

Path Desc	Waypoint Identifier	Fly-over	Course °M(°T)	Dist (NM)	Turn Dir	Altitude	Speed	VPA/RDH	Rec Navaid	Navigation Specification
IF	TL901	-	-	-	-	+2000	-	-	-	RNP APCH
TF	TL900	-	109°(113.7°)	3.5	-	@2000	-	-	-	RNP APCH
TF	RW11R	Y	109°(113.7°)	5.7	-	@173	-	-3.0/50	-	RNP APCH
TF	TL600	Y	109°(113.9°)	4.1	-	-	-	-	-	RNP APCH
DF	JANDA	Y	-	-	L	+2000	-	-	-	RNP APCH

Holding JANDA

Path Term	Waypoint Identifier	Fly-over	Course °M(°T)	Dist (NM)	Turn Dir	Rest Alts (ft AMSL)	Speed Limits (kt)	VPA/RDH (°/ft)	Rec Navaid	Navigation Specification
HM	JANDA	Y	109°(114.0°)	-	L	+2000	-	-	-	RNP 1

FAS Data Block

RNP RWY 11R

Input data

Operation Type	0
SBAS Provider	1 (EGNOS)
Airport Identifier	ESTL
Runway	11
Runway Letter	1 (Right)
Approach Performance Designator	0
Route Indicator	
Reference Path Data Selector	0
Reference Path Identifier	E11A
LTP/FTP Latitude	560511.4500N
LTP/FTP Longitude	0131052.3610E
LTP/FTP Ellipsoidal Height (metres)	73.9
FPAP Latitude	560445.4630N
Delta FPAP Latitude (seconds)	-25.9870
FPAP Longitude	0131237.3520E
Delta FPAP Longitude (seconds)	104.9910
Threshold Crossing Height	50.0
TCH Units Selector	0 (feet)
Glidepath Angle (degrees)	3.00
Course Width (metres)	105.00
Length Offset (metres)	0
HAL (metres)	40.0
VAL (metres)	50.0

Output data

Data Block	10 0C 14 13 05 4B 00 00 01 31 31 05 34 D9 11 18 92 21 A8 05 E3 16 FA 34 FF 3E 34 03 F4 01 2C 01 64 00 C8 FA EE 19 C9 D0
Calculated CRC Value	EE19C9D0

Required Additional Data

ICAO Code	ES
LTP/FTP Orthometric Height (metres)	37.5