

ARP 573946N 0182046E

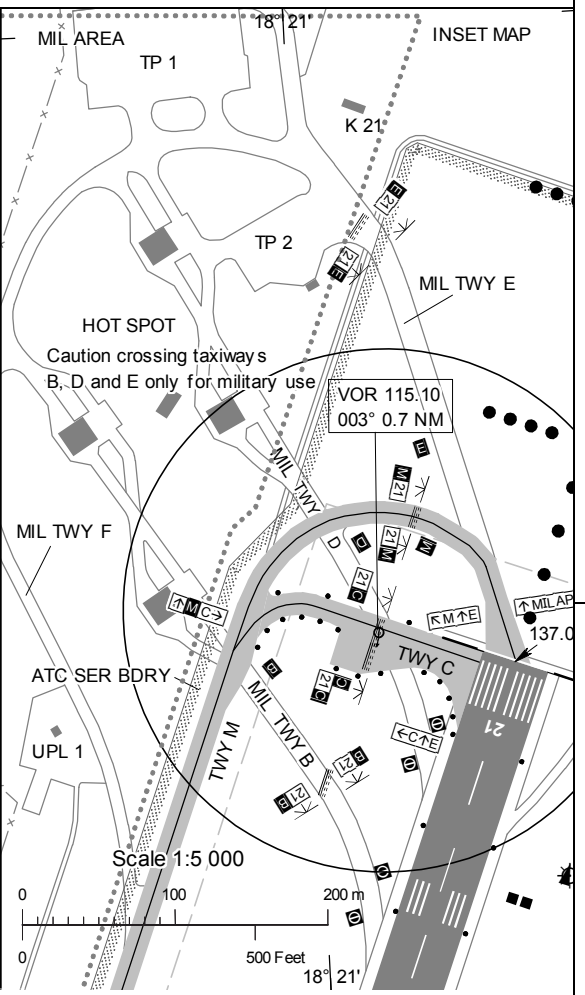
AD ELEV 164 FEET

LEGEND See GEN 2.3

Dimensions in m, ELEV in ft

TWY NR	WIDTH	Surface Bearing strength	Day marking		Taxiway lighting	
			Centerline Holding	Edge Centerline	RGL	Stopbar
A	20 m	ASPH PCN 50 F/A/X/T	CL HLDG	EDGE	RGL	
C	15 m	ASPH PCN 44 F/A/X/T	CL HLDG	EDGE	RGL	
G	6 m	GRASS				
K	6 m	ASPH	CL HLDG		RGL	
M	15 m	ASPH PCN 50 F/A/X/T	CL HLDG		RGL	

**SPECIAL REGULATIONS:**  
 TWY B, D, E and F only available for MIL traffic.  
 TWY M available during daylight for CIV traffic aircraft code A, B and C with wheelbase below 18 m.



57° 39'

RWY NR	TRUE & MAG BRG	THR PSN Geoid undulation	Bearing strength	THR ELEV and highest ELEV of TDZ of precision APCH RWY	Declared distances				Approach and runway lighting				
					TORA	TODA	ASDA	LDA	APCH	THR TRID TDZ	VASIS (MEHT)	Edge	End
03	020.98° GEO 015° MAG	573915.89N 0182024.75E GUND 82 ft	PCN 50 F/A/X/T	THR 140 ft	2000	2000	2000	2000	SALS 420 m LIH	THR Green WBAR	PAPI Left/3.00° (55.8 ft)	2000/55 m White Caution zone 600 m yellow LIH	Red WBAR
21	200.99° GEO 195° MAG	574016.25N 0182107.96E GUND 81.7 ft	PCN 50 F/A/X/T	THR 137.0 ft TDZ 137.8 ft	2000	2000	2000	2000	Calvert Cat I 900 m LIH	THR Green WBAR	PAPI Left/3.00° (61.7 ft)	2000/55 m White Caution zone 600 m yellow LIH	Red WBAR
10	101.40° GEO 095° MAG	573903.56N 0181946.75E GUND 82 ft		THR 142 ft	1100	1100	1100	1100					
28	281.40° GEO 275° MAG	573856.53N 0182051.80E GUND 82 ft		THR 164 ft	1100	1100	1100	1100					

REMARK: 91/96UL daytime.