

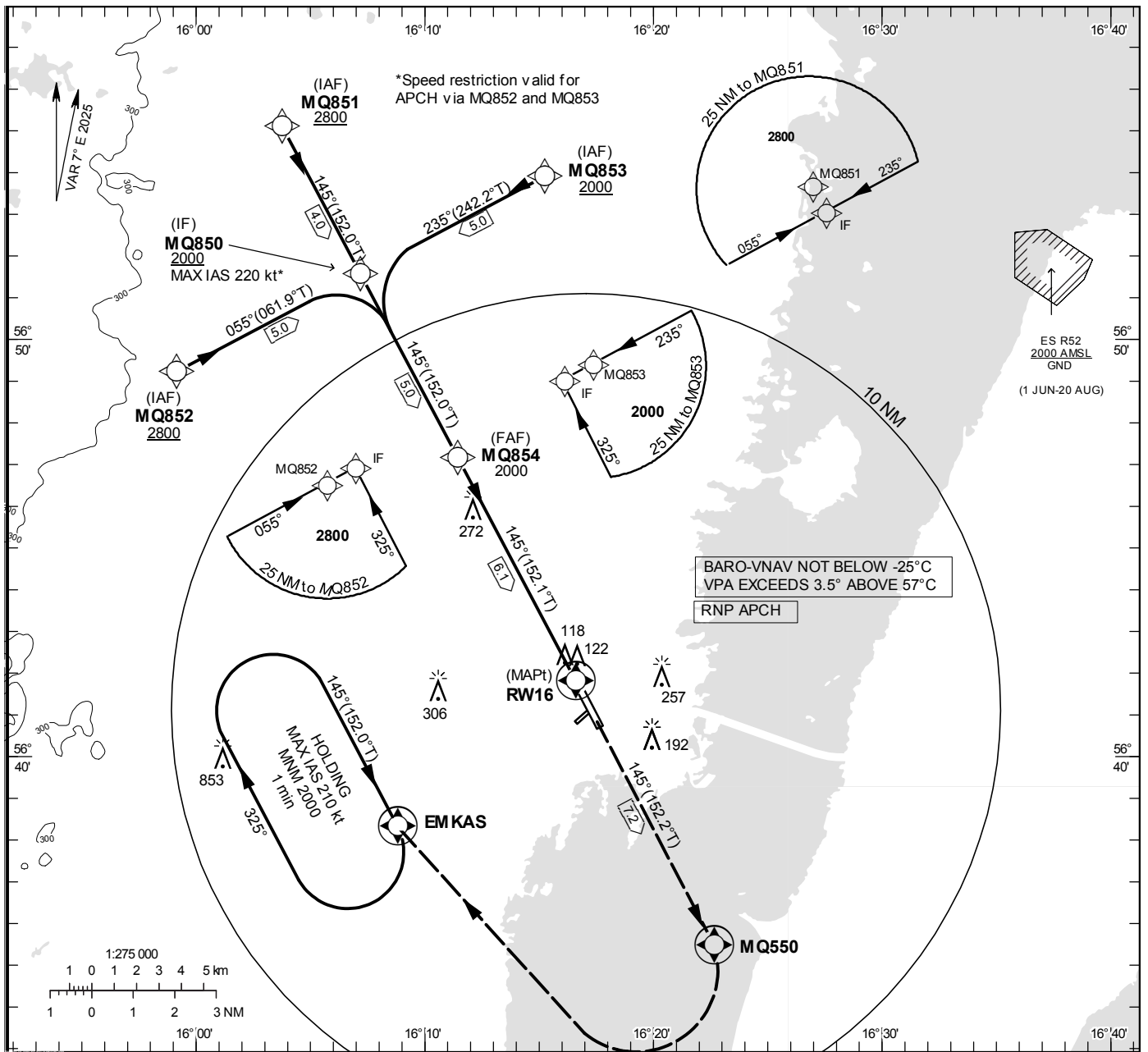
**INSTRUMENT  
APPROACH  
CHART – ICAO**

**THR ELEV 18 ft, AD ELEV 18 ft**  
 OCH are related to THR.  
 BRG are MAG (True).  
 ALT, HGT and ELEV in ft.

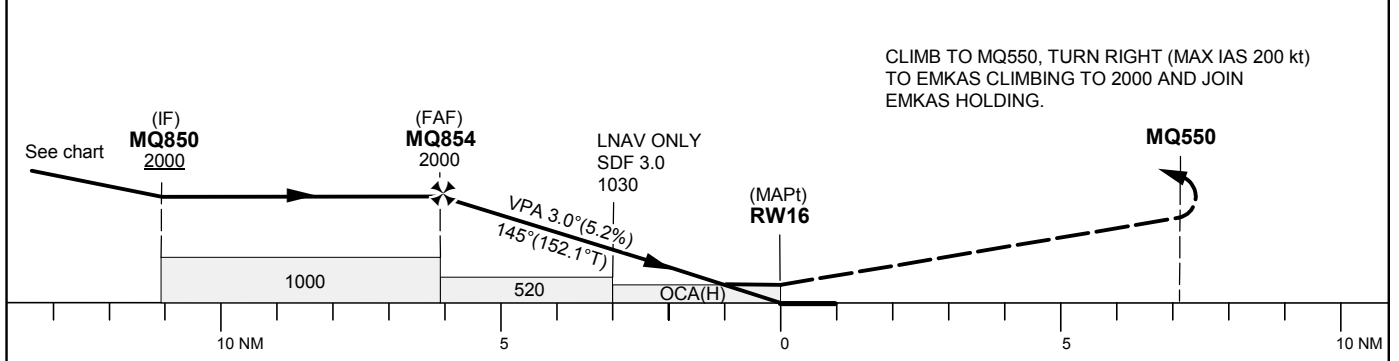
KALMAR TOWER 130.805

RNP RWY 16

EGNOS Ch 94400 E 16A



TA 5000 ft AMSL RDH 50 ft Circling MAX IAS 200 kt



Cat of ACFT	OCA (H)				Final approach	Distance FAF-MAPt 6.1 NM						
	A	B	C	D		Dist to RW16 (NM)	6	5	4	3	2	1
LPV	248(230)	260(242)	268(250)	279(261)	ALT	1980	1660	1340	1020	700	390	
LNAV/VNAV	253(235)	265(247)	273(255)	283(265)	GS	kt	80	100	120	140	160	180
LNAV	370 (360)				Rate of descent	ft/min	425	530	635	745	850	955
Circling	490(480)	560(550)	700(690)	700(690)								

## RNP RWY 16 via MQ851

Path Desc	Waypoint Identifier	Fly-over	Course °M(°T)	Dist (NM)	Turn Dir	Altitude	Speed	VPA/RDH	Rec Navaid	Navigation Specification
IF	MQ851	-	-	-	-	+2800	-	-	-	RNP APCH
TF	MQ850	-	145°(152.0°)	4.0	-	+2000	-	-	-	RNP APCH

## RNP RWY 16 via MQ852

Path Desc	Waypoint Identifier	Fly-over	Course °M(°T)	Dist (NM)	Turn Dir	Altitude	Speed	VPA/RDH	Rec Navaid	Navigation Specification
IF	MQ852	-	-	-	-	+2800	-	-	-	RNP APCH
TF	MQ850	-	055°(061.9°)	5.0	-	+2000	-220	-	-	RNP APCH

## RNP RWY 16 via MQ853

Path Desc	Waypoint Identifier	Fly-over	Course °M(°T)	Dist (NM)	Turn Dir	Altitude	Speed	VPA/RDH	Rec Navaid	Navigation Specification
IF	MQ853	-	-	-	-	+2000	-	-	-	RNP APCH
TF	MQ850	-	235°(242.2°)	5.0	-	+2000	-220	-	-	RNP APCH

Path Desc	Waypoint Identifier	Fly-over	Course °M(°T)	Dist (NM)	Turn Dir	Altitude	Speed	VPA/RDH	Rec Navaid	Navigation Specification
IF	MQ850	-	-	-	-	+2000	-	-	-	RNP APCH
TF	MQ854	-	145°(152.0°)	5.0	-	@2000	-	-	-	RNPAPCH
TF	RW16	Y	145°(152.1°)	6.1	-	@68	-	-3.0/50	-	RNP APCH
TF	MQ550	Y	145°(152.2°)	7.2	-	-	-	-	-	RNP APCH
DF	EMKAS	Y	-	-	R	+2000	-200	-	-	RNP APCH

## ESMQ Holding EMKAS

Path Desc	Waypoint Identifier	Fly-over	Course °M(°T)	Dist (NM)	Turn Dir	Altitude	Speed	VPA/RDH	Rec Navaid	Navigation Specification
HM	EMKAS	Y	145°(152.0°)	-	R	+2000	-210	-	-	RNAV 1

## Inputdata

Operation Type	0
SBAS Provider	1 (EGNOS)
Airport Identifier	ESMQ
Runway	16
Runway Letter	0 (None)
Approach Performance Designator	0
Route Indicator	
Reference Path Data Selector	0
Reference Path Identifier	E16A
LTP/FTP Latitude	564148.5510N
LTP/FTP Longitude	0161635.9710E
LTP/FTP Ellipsoidal Height (metres)	35.9
FPAP Latitude	564042.7290N
Delta FPAP Latitude (seconds)	-65.8220
FPAP Longitude	0161739.0695E
Delta FPAP Longitude (seconds)	63.0985
Threshold Crossing Height	50.0
TCH Units Selector	0 (feet)
Glidepath Angle (degrees)	3.00
Course Width (metres)	105.00
Length Offset (metres)	256
HAL (metres)	40.0
VAL (metres)	50.0

## Outputdata

Data Block	10 11 0D 13 05 10 00 00 01 36 31 05 0E E6 54 18 06 35 FC 06 67 15 C4 FD FD F5 EC 01 F4 01 2C 01 64 20 C8 FA FF 11 74 79
Calculated CRC Value	FF117479

## Required Additional Data

ICAOCode	ES
LTP/FTP Orthometric Height (metres)	5.5