

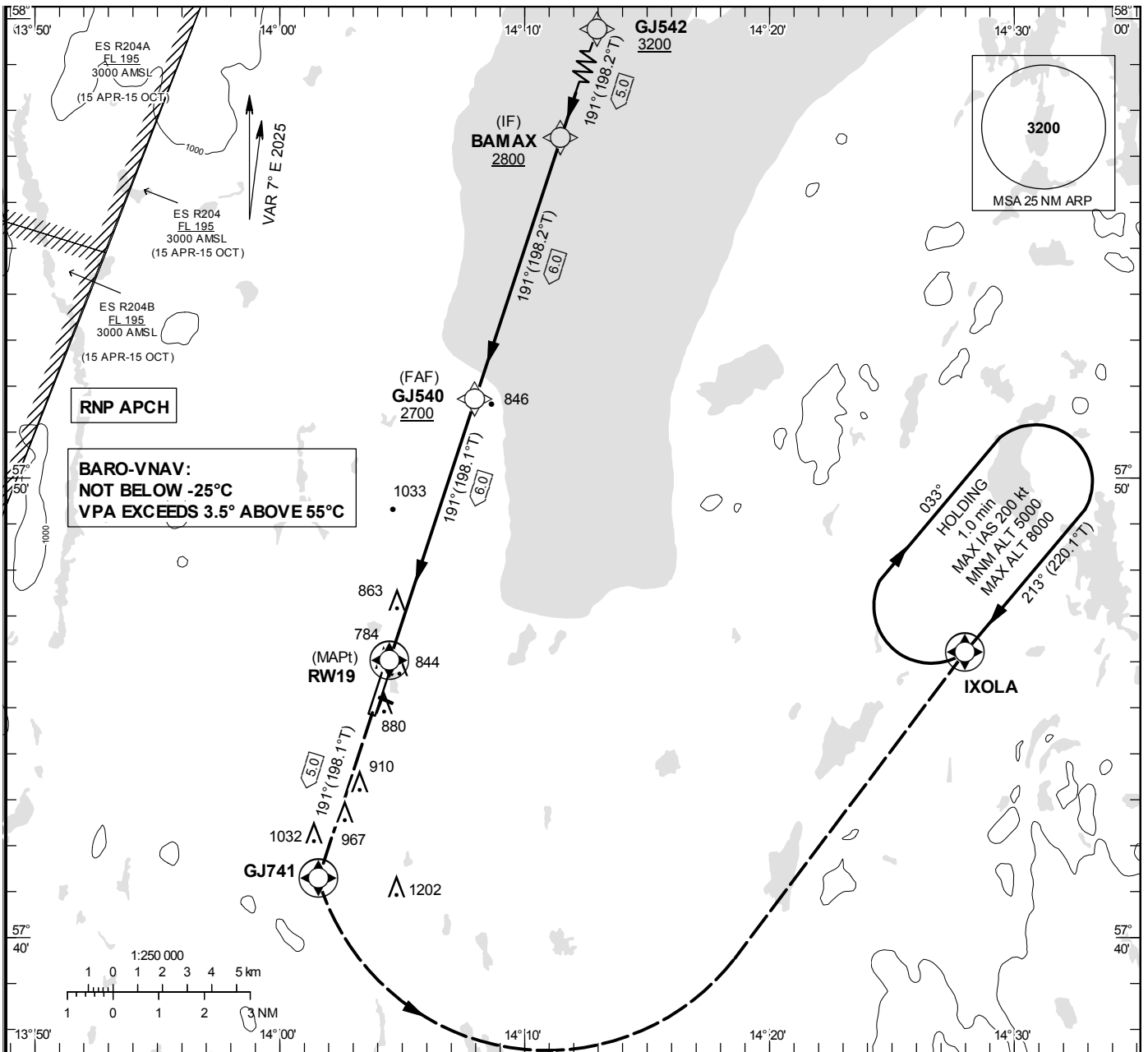
**INSTRUMENT  
APPROACH  
CHART – ICAO**

**THR ELEV 739.1 ft, AD ELEV 742 ft**  
 OCH are related to THR.  
 BRG are MAG (True).  
 ALT, HGT and ELEV in ft.

JÖNKÖPING TOWER 118.255

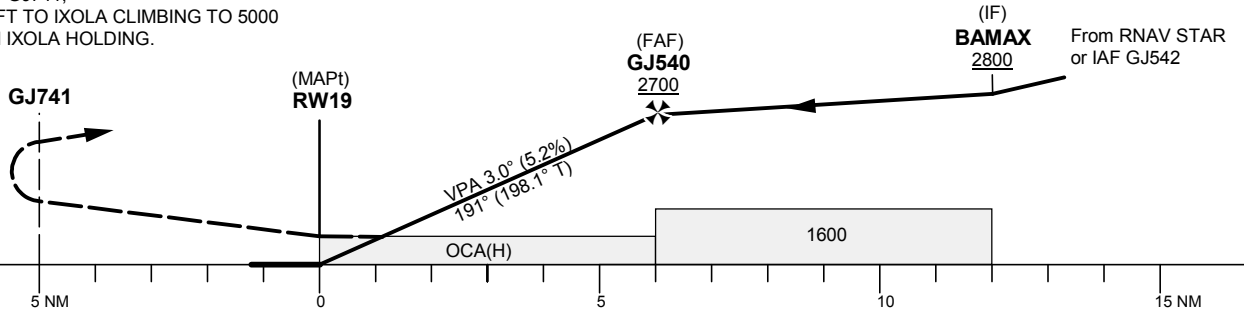
**RNP RWY 19**

EGNOS CH 71157 E 19A



TA 5000 ft AMSL RDH 50 ft

CLIMB TO GJ741,  
 TURN LEFT TO IXOLA CLIMBING TO 5000  
 AND JOIN IXOLA HOLDING.



Cat of ACFT	OCA (H)				Final approach Dist to RW 19	Distance FAF-MAPT 6.0 NM						
	A	B	C	D		6	5	4	3	2	1	
LPV	884(144)	892(152)	901(161)	910(170)	ALT	2700	2380	2060	1740	1430	1110	
LNAV/VNAV	993(254)	1005(266)	1013(274)	1024(285)	GS	kt	80	100	120	140	160	180
LNAV	1110(380)				Rate of descent	ft/min	425	530	635	745	850	955
Circling (MAX IAS 190kt)	1210(470)	1270(530)	1600(860)	1600(860)								

## RNP RWY 19

## Instrument Approach Procedure via RNAV STAR DEVNI 4L / NEGAS 4L

Path Desc	Waypoint Identifier	Fly-over	Course °M(°T)	Dist (NM)	Turn Dir	Altitude	Speed	VPA/RDH	Rec Navaid	Navigation Specification
IF	BAMAX	-	-	-	-	+2800	-210*	-	-	RNP APCH
TF	GJ540	-	191°(198.2°)	6.0	-	+2700	-	-	-	RNP APCH
TF	RW19	Y	191°(198.1°)	6.0	-	@788	-	-3.0/50	-	RNP APCH
TF	GJ741	Y	191°(198.1°)	5.0	-	-	-	-	-	RNP APCH
DF	IXOLA	Y	-	-	L	+5000	-	-	-	RNP APCH

\*speed restriction only valid for arrivals via DEVNI 4L

## Instrument Approach Procedure via GJ542

Path Desc	Waypoint Identifier	Fly-over	Course °M(°T)	Dist (NM)	Turn Dir	Altitude	Speed	VPA/RDH	Rec Navaid	Navigation Specification
IF	GJ542	-	-	-	-	+3200	-	-	-	RNP APCH
TF	BAMAX	-	191°(198.2°)	5.0	-	+2800	-	-	-	RNP APCH
TF	GJ540	-	191°(198.2°)	6.0	-	+2700	-	-	-	RNP APCH
TF	RW19	Y	191°(198.1°)	6.0	-	@788	-	-3.0/50	-	RNP APCH
TF	GJ741	Y	191°(198.1°)	5.0	-	-	-	-	-	RNP APCH
DF	IXOLA	Y	-	-	L	+5000	-	-	-	RNP APCH

## ESGJ Holding IXOLA

Path Desc	Waypoint Identifier	Fly-over	Course °M(°T)	Dist (NM)	Turn Dir	Altitude	Speed	VPA/RDH	Rec Navaid	Navigation Specification
HM	IXOLA	Y	213°(220.1°)	-	R	+5000	-200	-	-	RNAV 1

## FAS Data Block

## RNP RWY 19

## Input data

Operation Type	0
SBAS Provider	1 (EGNOS)
Airport Identifier	ESGJ
Runway	19
Runway Letter	0 (None)
Approach Performance Designator	0
Route Indicator	
Reference Path Data Selector	0
Reference Path Identifier	E19A
LTP/FTP Latitude	574601.1885N
LTP/FTP Longitude	0140428.0940E
LTP/FTP Ellipsoidal Height (metres)	258.1
FPAP Latitude	574452.1655N
Delta FPAP Latitude (seconds)	-69.0230
FPAP Longitude	0140345.9580E
Delta FPAP Longitude (seconds)	-42.1360
Threshold Crossing Height	50.0
TCH Units Selector	0 (feet)
Glidepath Angle (degrees)	3.00
Course Width (metres)	105.00
Length Offset (metres)	0
HAL (metres)	40.0
VAL (metres)	35.0

## Output data

Data Block	10 0A 07 13 05 13 00 00 01 39 31 05 C9 78 CA 18 7C 44 0A 06 15 1E C2 E4 FD D0 B6 FE F4 01 2C 01 64 00 C8 AF 09 4F 61 C8
Calculated CRC Value	094F61C8

## Required Additional Data

ICAO Code	ES
LTP/FTP Orthometric Height (metres)	225.3