

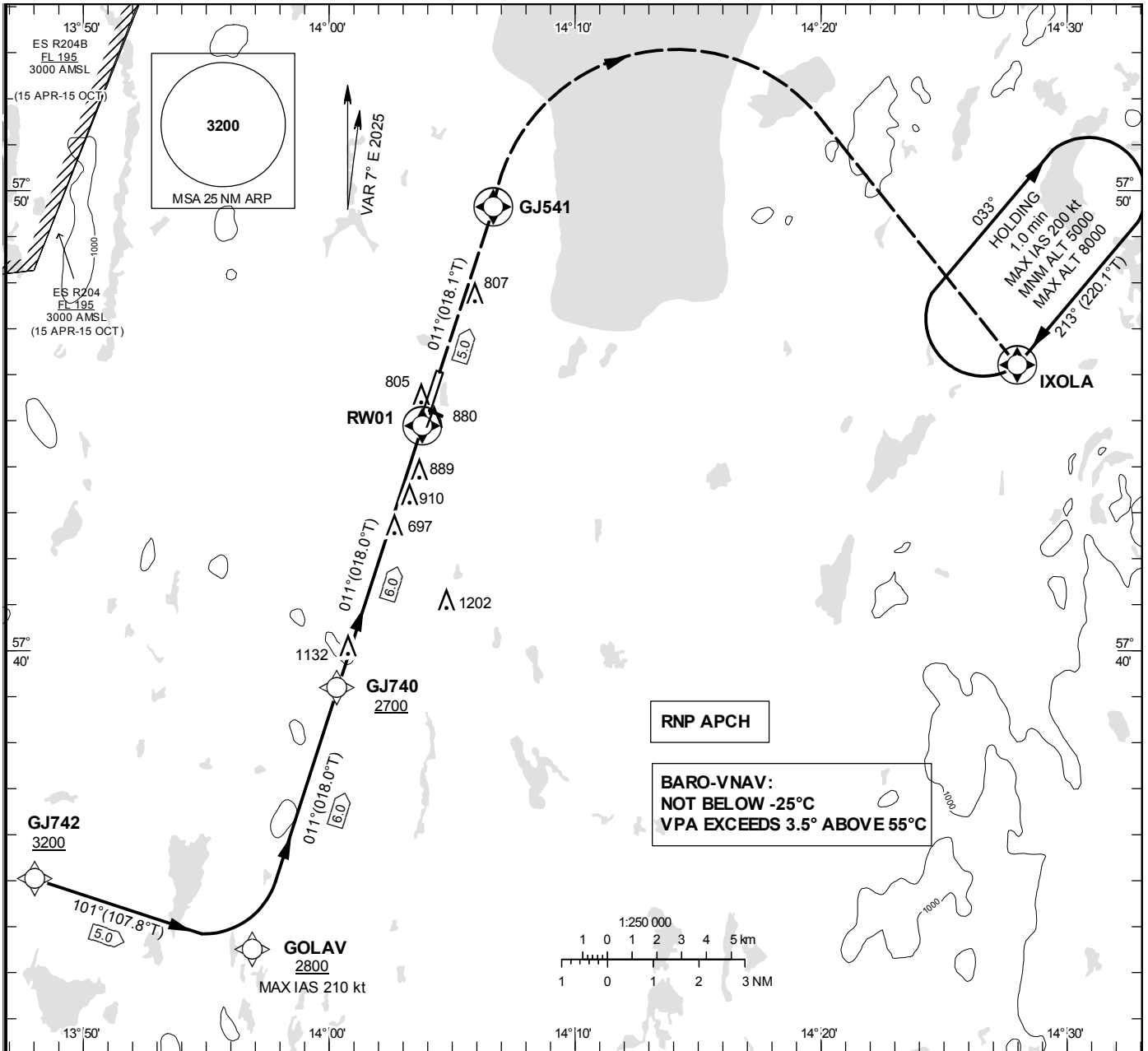
**INSTRUMENT  
APPROACH  
CHART – ICAO**

**THR ELEV 734.3 ft, AD ELEV 742 ft**  
 OCH are related to THR.  
 BRG are MAG (True).  
 ALT, HGT and ELEV in ft.

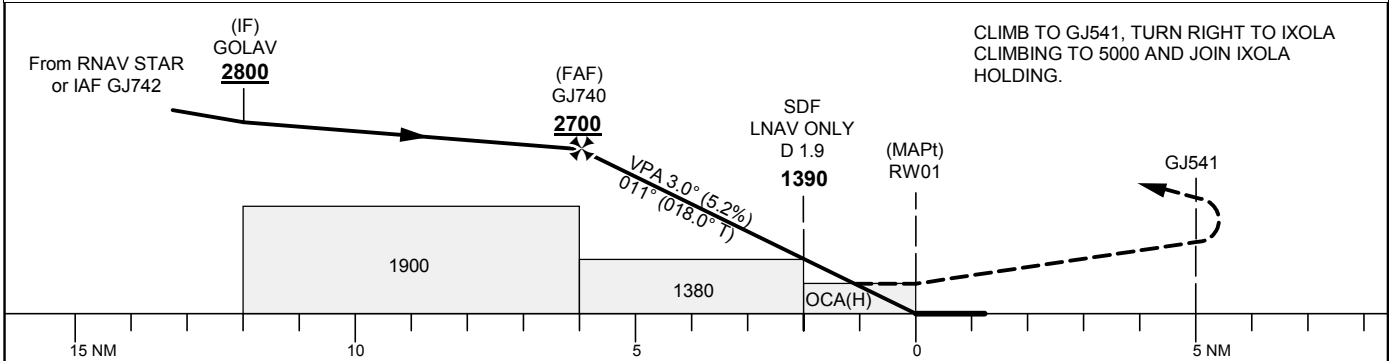
JÖNKÖPING TOWER 118.255

RNP RWY 01

EGNOS CH 69803 E 01A



TA 5000 ft AMSL RDH 50 ft



CLIMB TO GJ541, TURN RIGHT TO IXOLA  
 CLIMBING TO 5000 AND JOIN IXOLA  
 HOLDING.

Cat of ACFT	OCA (H)				Final approach	Distance FAF-MAPt 6.0 NM						
	A	B	C	D	Dist to RW 01	6	5	4	3	2		
LPV	877(142)	886(151)	896(161)	908(173)	ALT	2700	2380	2060	1740	1420		
LNAV/VNAV	1019(285)	1032(298)	1040(306)	1050(316)	GS	kt	80	100	120	140	160	180
LNAV	1190(460)				Rate of descent	ft/min	425	530	635	745	850	955
Circling (MAX IAS 190 kt)	1210(470)	1270(530)	1600(860)	1600(860)								

## RNP RWY 01

## Instrument Approach Procedure via RNAV STAR DEVNI 4K / NEGAS 4K

Path Desc	Waypoint Identifier	Fly-over	Course °M(°T)	Dist (NM)	Turn Dir	Altitude	Speed	VPA/RDH	Rec Navaid	Navigation Specification
IF	GOLAV	-	-	-	-	+2800	-210*	-	-	RNP APCH
TF	GJ740	-	011°(018.0°)	6.0	-	+2700	-	-	-	RNP APCH
TF	RW01	Y	011°(018.0°)	6.0	-	@784	-	-3.0/50	-	RNP APCH
TF	GJ541	Y	011°(018.1°)	5.0	-	-	-	-	-	RNP APCH
DF	IXOLA	Y	-	-	R	+5000	-	-	-	RNP APCH

\*speed restriction only valid for arrivals via NEGAS 4K

## Instrument Approach Procedure via GJ742

Path Desc	Waypoint Identifier	Fly-over	Course °M(°T)	Dist (NM)	Turn Dir	Altitude	Speed	VPA/RDH	Rec Navaid	Navigation Specification
IF	GJ742	-	-	-	-	+3200	-	-	-	RNP APCH
TF	GOLAV	-	101°(107.8°)	5.0	-	+2800	-	-	-	RNP APCH
TF	GJ740	-	011°(018.0°)	6.0	L	+2700	-	-	-	RNP APCH
TF	RW01	Y	011°(018.0°)	6.0	-	@784	-	-3.0/50	-	RNP APCH
TF	GJ541	Y	011°(018.1°)	5.0	-	-	-	-	-	RNP APCH
DF	IXOLA	Y	-	-	R	+5000	-	-	-	RNP APCH

## ESGJ Holding IXOLA

Path Desc	Waypoint Identifier	Fly-over	Course °M(°T)	Dist (NM)	Turn Dir	Altitude	Speed	VPA/RDH	Rec Navaid	Navigation Specification
HM	IXOLA	Y	213°(220.1°)	-	R	+5000	-200	-	-	RNAV 1

## FAS Data Block

## RNP RWY 01

## Input data

Operation Type	0
SBAS Provider	1 (EGNOS)
Airport Identifier	ESGJ
Runway	01
Runway Letter	0 (None)
Approach Performance Designator	0
Route Indicator	
Reference Path Data Selector	0
Reference Path Identifier	E01A
LTP/FTP Latitude	574453.4800N
LTP/FTP Longitude	0140346.7555E
LTP/FTP Ellipsoidal Height (metres)	256.7
FPAP Latitude	574601.1885N
Delta FPAP Latitude (seconds)	67.7085
FPAP Longitude	0140428.0940E
Delta FPAP Longitude (seconds)	41.3385
Threshold Crossing Height	50.0
TCH Units Selector	0 (feet)
Glidepath Angle (degrees)	3.00
Course Width (metres)	105.00
Length Offset (metres)	0
HAL (metres)	40.0
VAL (metres)	35.0

## Output data

Data Block	10 0A 07 13 05 01 00 00 01 31 30 05 D0 67 C8 18 87 01 09 06 07 1E F9 10 02 F5 42 01 F4 01 2C 01 64 00 C8 AF 2D 0C 95 0F
Calculated CRC Value	2D0C950F

## Required Additional Data

ICAO Code	ES
LTP/FTP Orthometric Height (metres)	223.8