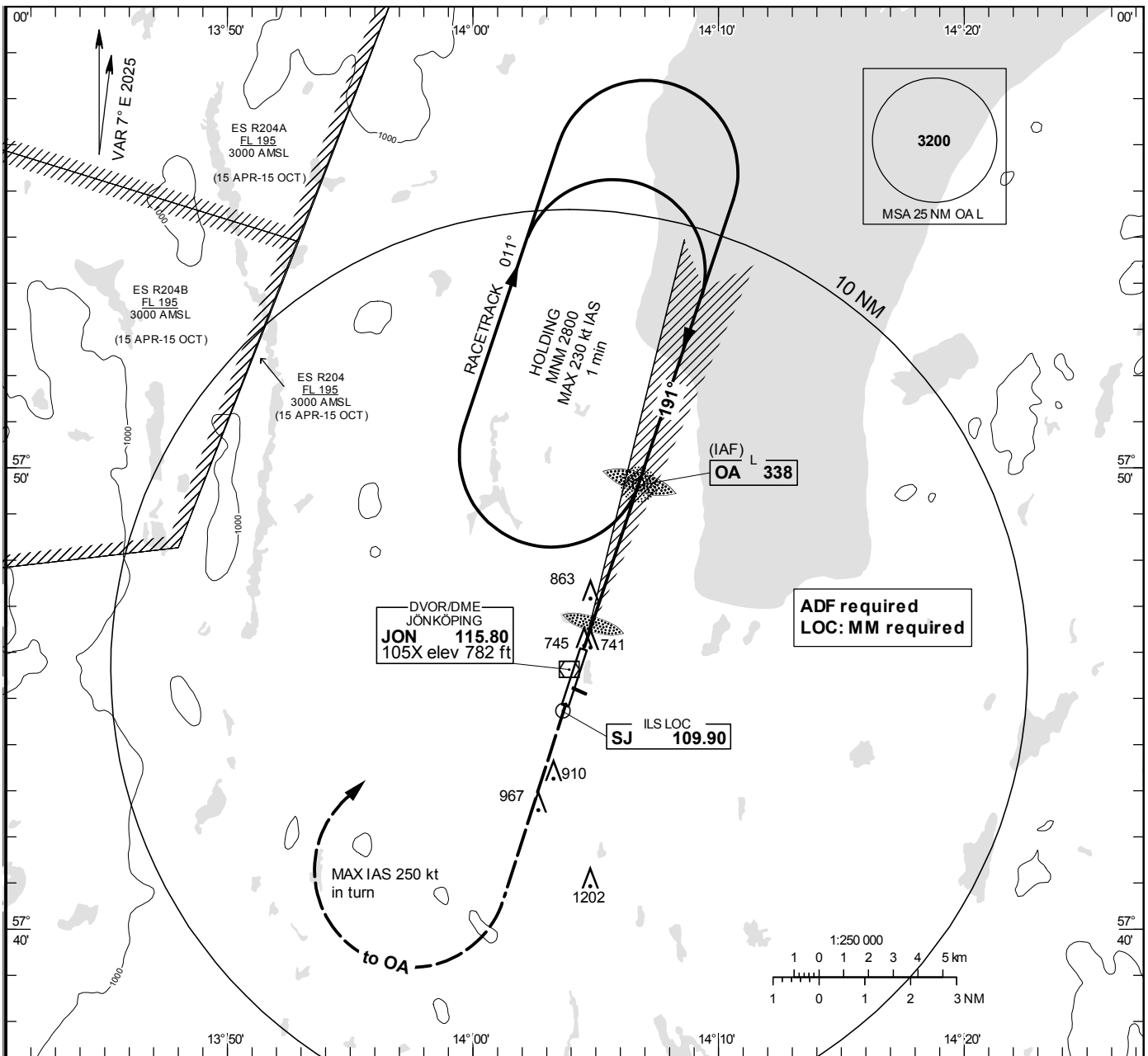


INSTRUMENT APPROACH CHART – ICAO

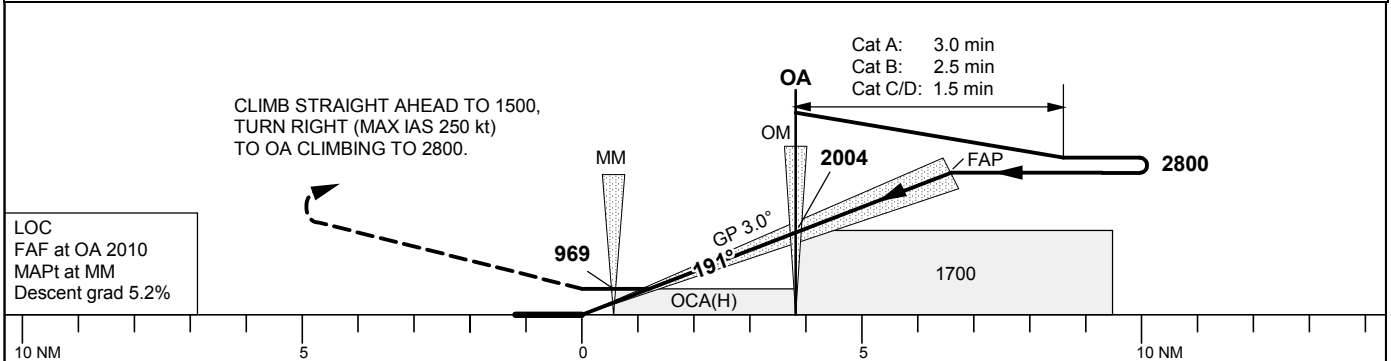
THR ELEV 739.1 ft, AD ELEV 742 ft
 OCH are related to THR.
 Circling OCH are related to AD ELEV.
 BRG are MAG
 ALT. HGT and ELEV in ft.

JÖNKÖPING TOWER 118.255

ILS or LOC RWY 19



TA 5000 ft AMSL RDH 50.9 ft *Timing not authorized for defining the MAPt



LOC
 FAF at OA 2010
 MAPt at MM
 Descent grad 5.2%

OCA (H)					Final approach		LOC Distance FAF-MAPt 3.2 NM*						
Cat of ACFT	A	B	C	D	DME JON NM	2		3		4			
Straight-in Approach	CAT I	884(144)	892(152)	901(161)	910(170)	ALT	1280		1600		1920		
	LOC	1110(380)				GS	kt	80	100	120	140	160	180
Circling (Max IAS 190 kt)		1210(470)	1270(530)	1600(860)	1600(860)	Time	min:s	2:26	1:57	1:38	1:24	1:13	1:05
						Rate of descent	ft/min	425	530	635	745	850	955