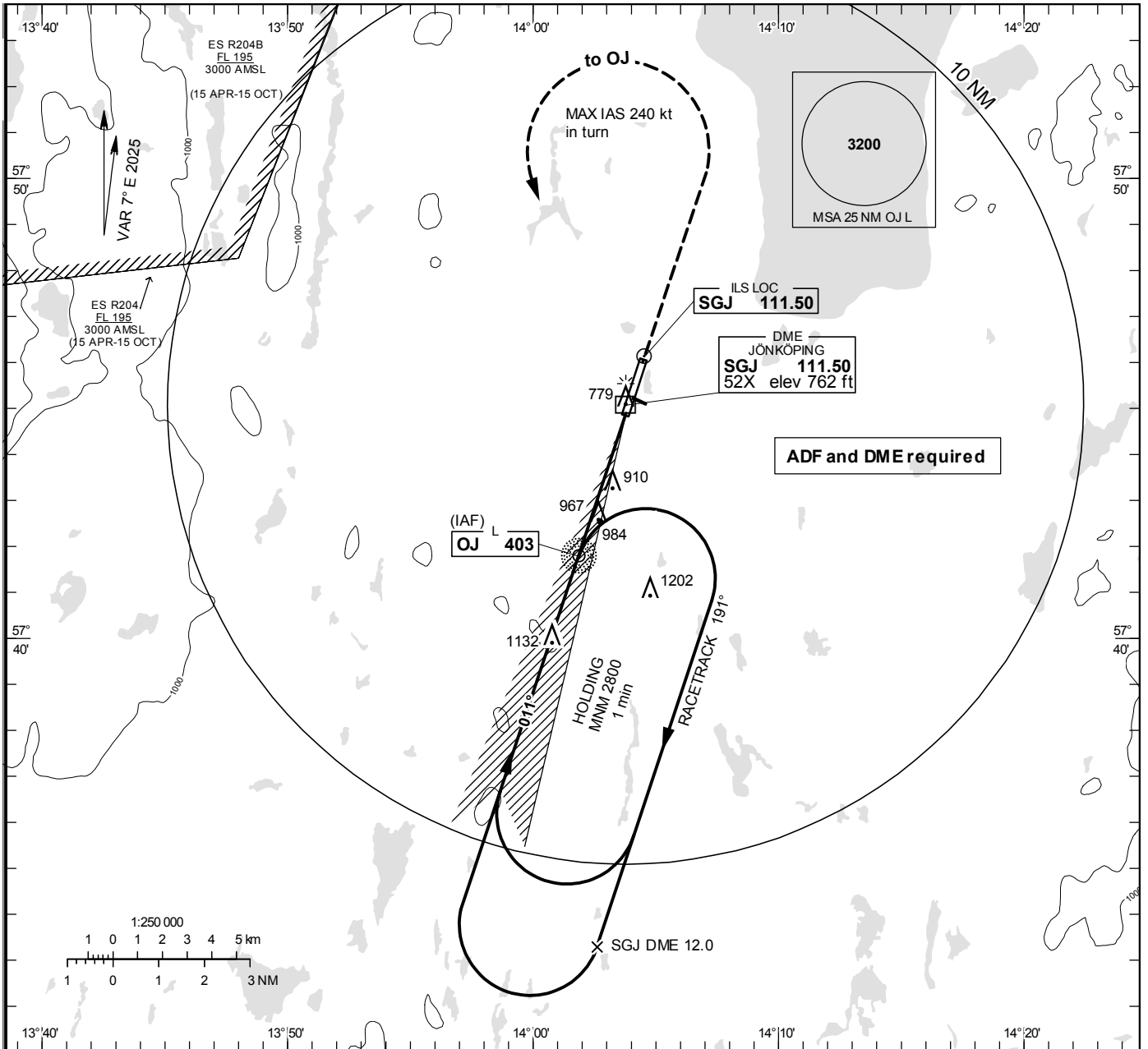


INSTRUMENT APPROACH CHART – ICAO

THR ELEV 734.3 ft, AD ELEV 742 ft
 OCH are related to THR.
 Circling OCH are related to AD ELEV.
 BRG are MAG
 ALT, HGT and ELEV in ft.

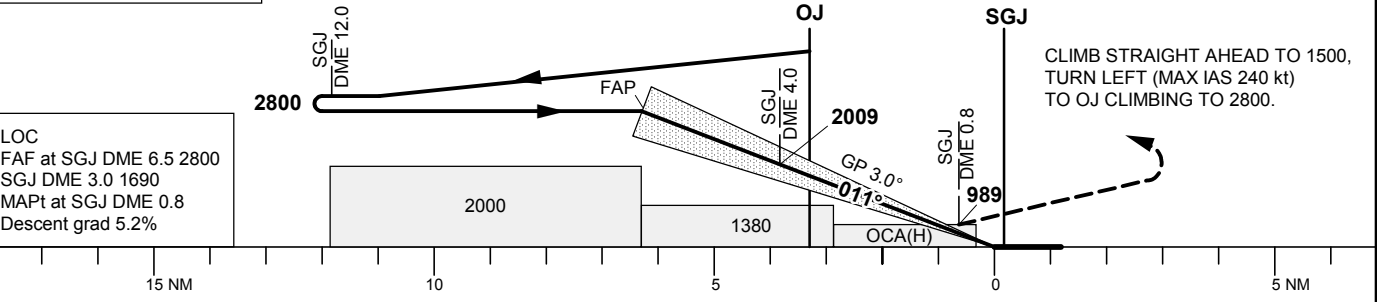
JÖNKÖPING TOWER 118.255

ILS or LOC RWY 01



TA 5000 ft AMSL RDH 56.0 ft *Timing not authorized for defining the MAPt

OM replaced by SGJ DME 4.0
 MM replaced by SGJ DME 0.8



LOC
 FAF at SGJ DME 6.5 2800
 SGJ DME 3.0 1690
 MAPt at SGJ DME 0.8
 Descent grad 5.2%

OCA (H)					Final approach	LOC Distance FAF-MAPt 6.0 NM*							
Cat of ACFT	A	B	C	D	DME SGJ NM	6	5	4	3	2			
Straight-in Approach	CAT I	876(141)	885(150)	896(161)	908(173)	ALT	2650	2330	2010	1690	1380		
	LOC	1230(500)				GS	kt	80	100	120	140	160	180
Circling (MAX IAS 190 kt)		1210(470)	1270(530)	1600(860)	1600(860)	Time	min:s	4:30	3:36	3:00	2:34	2:15	2:00
						Rate of descent	ft/min	425	530	635	745	850	955