

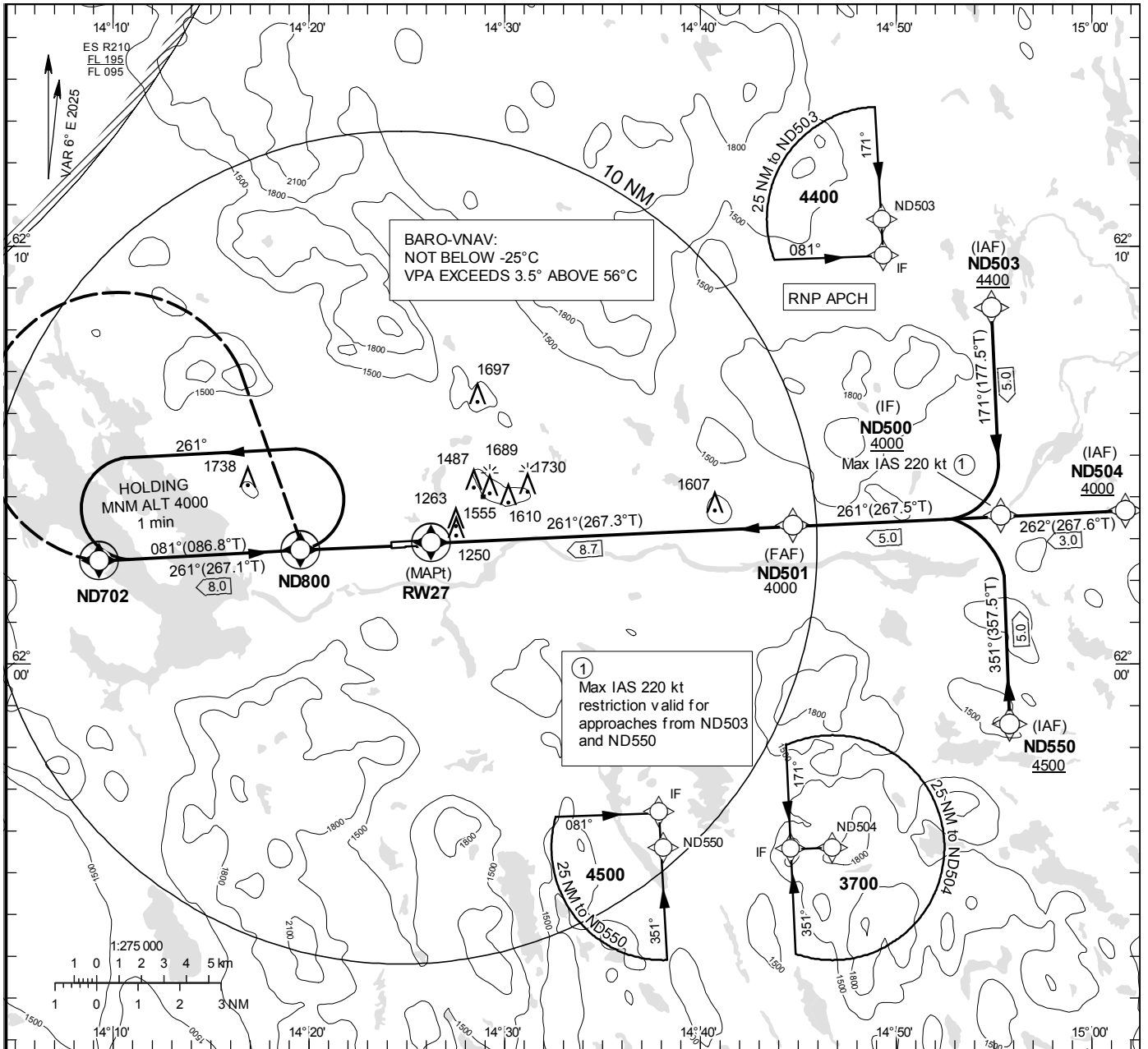
**INSTRUMENT
APPROACH
CHART – ICAO**

THR ELEV 1177 ft, AD ELEV 1178 ft
 OCH are related to THR.
 Circling OCH are related to AD ELEV.
 BRG are MAG (True).
 ALT. HGT and ELEV in ft.

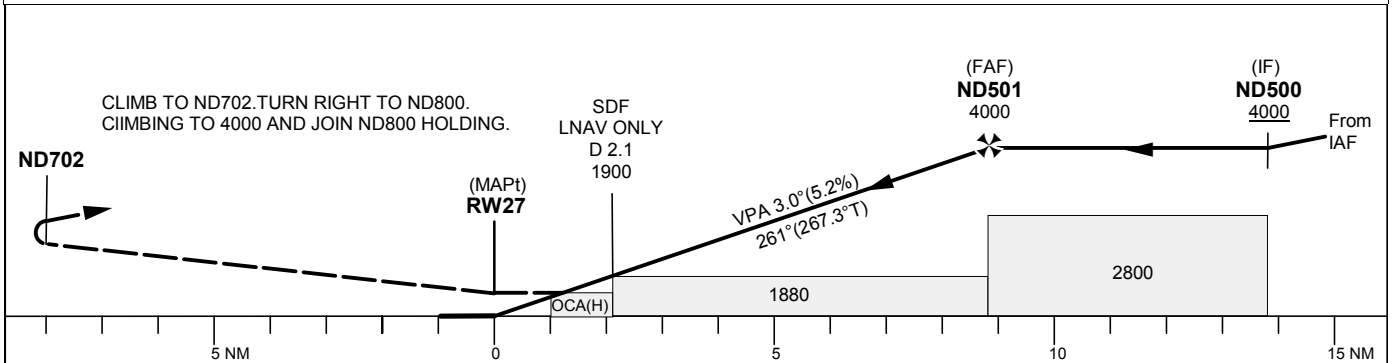
SVEG INFORMATION 122.205

RNP RWY 27

EGNOS Ch 90027 E 27A



TA 6000 ft AMSL RDH 50 ft



Cat of ACFT	OCA (H)			Final approach Dist to RWY 27 NM	Distance FAF-MAPt 8.7 NM							
	A	B	C		2	3	4	5	6	7	8	
LPV	1380 (203)	1393 (216)	1401 (224)	ALT	1860	2180	2500	2820	3140	3460	3770	
LNAV/VNAV	1394 (217)	1406 (229)	1414 (237)	GS	kt	80	100	120	140	160		
LNAV	1670 (500)			Rate of descent	ft/min	425	530	635	745	850		
Circling	1850 (680)	2200 (1030)	2640 (1470)									
Circling N RWY	1790 (620)	2030 (860)	2140 (970)									

LFV

CHANGE: VAR, obst, TAA to ND503, MNM ALT at ND503, Baro-VNAV new, MOCA, OCA(H), circling new, coding, editorial.

AIRAC AMDT 5/2024

RNP RWY 27 via ND550

Path Desc	Waypoint Identifier	Fly-over	Course °M(°T)	Dist (NM)	Turn Dir	Altitude	Speed	VPA/RDH	Rec Navaid	Navigation Specification
IF	ND550	-	-	-	-	+4500	-	-	-	RNP APCH
TF	ND500	-	351°(357.5°)	5.0	-	+4000	-220	-	-	RNP APCH

RNP RWY 27 via ND504

Path Desc	Waypoint Identifier	Fly-over	Course °M(°T)	Dist (NM)	Turn Dir	Altitude	Speed	VPA/RDH	Rec Navaid	Navigation Specification
IF	ND504	-	-	-	-	-	-	-	-	RNP APCH
TF	ND500	-	262°(267.6°)	3.0	-	+4000	-	-	-	RNP APCH

RNP RWY 27 via ND503

Path Desc	Waypoint Identifier	Fly-over	Course °M(°T)	Dist (NM)	Turn Dir	Altitude	Speed	VPA/RDH	Rec Navaid	Navigation Specification
IF	ND503	-	-	-	-	+4400	-	-	-	RNP APCH
TF	ND500	-	171°(177.5°)	5.0	-	+4000	-220	-	-	RNP APCH

Path Desc	Waypoint Identifier	Fly-over	Course °M(°T)	Dist (NM)	Turn Dir	Altitude	Speed	VPA/RDH	Rec Navaid	Navigation Specification
IF	ND500	-	-	-	-	+4000	-	-	-	RNP APCH
TF	ND501	-	261°(267.5°)	5.0	-	+4000	-	-	-	RNP APCH
TF	RW27	Y	261°(267.3°)	8.7	-	@1227	-	-3.0/50	-	RNP APCH
TF	ND702	Y	261°(267.1°)	8.0	-	-	-	-	-	RNP APCH
DF	ND800	Y	-	-	R	+4000	-	-	-	RNP APCH

Path Desc	Waypoint Identifier	Fly-over	Course °M(°T)	Dist (NM)	Turn Dir	Altitude	Speed	VPA/RDH	Rec Navaid	Navigation Specification
HM	ND800	Y	081°(086.8°)	-	L	+4000	-	-	-	RNP 1

FAS Data Block

RNP RWY 27

Input data

Operation Type	0
SBAS Provider	1 (EGNOS)
Airport Identifier	ESND
Runway	27
Runway Letter	0 (None)
Approach Performance Designator	0
Route Indicator	
Reference Path Data Selector	0
Reference Path Identifier	E27A
LTP/FTP Latitude	620253.2390N
LTP/FTP Longitude	0142614.1905E
LTP/FTP Ellipsoidal Height (metres)	391.8
FPAP Latitude	620250.4105N
Delta FPAP Latitude (seconds)	-2.8285
FPAP Longitude	0142417.2795E
Delta FPAP Longitude (seconds)	-116.9110
Threshold Crossing Height	50.0
TCH Units Selector	0 (feet)
Glidepath Angle (degrees)	3.00
Course Width (metres)	105.00
Length Offset (metres)	0
HAL (metres)	40.0
VAL (metres)	50.0

Output data

Data Block	10 04 0E 13 05 1B 00 00 01 37 32 05 6E CF A0 1A 5D 20 32 06 4E 23 E7 E9 FF A2 6E FC F4 01 2C 01 64 00 C8 FA 73 B7 53 6B
Calculated CRC Value	73B7536B

Required Additional Data

ICAO Code	ES
LTP/FTP Orthometric Height (metres)	358.7