

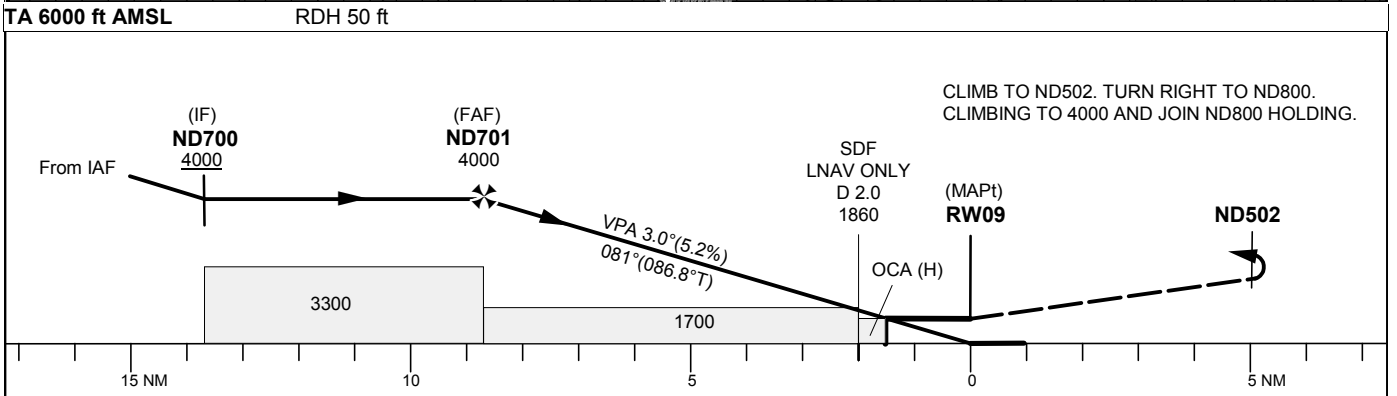
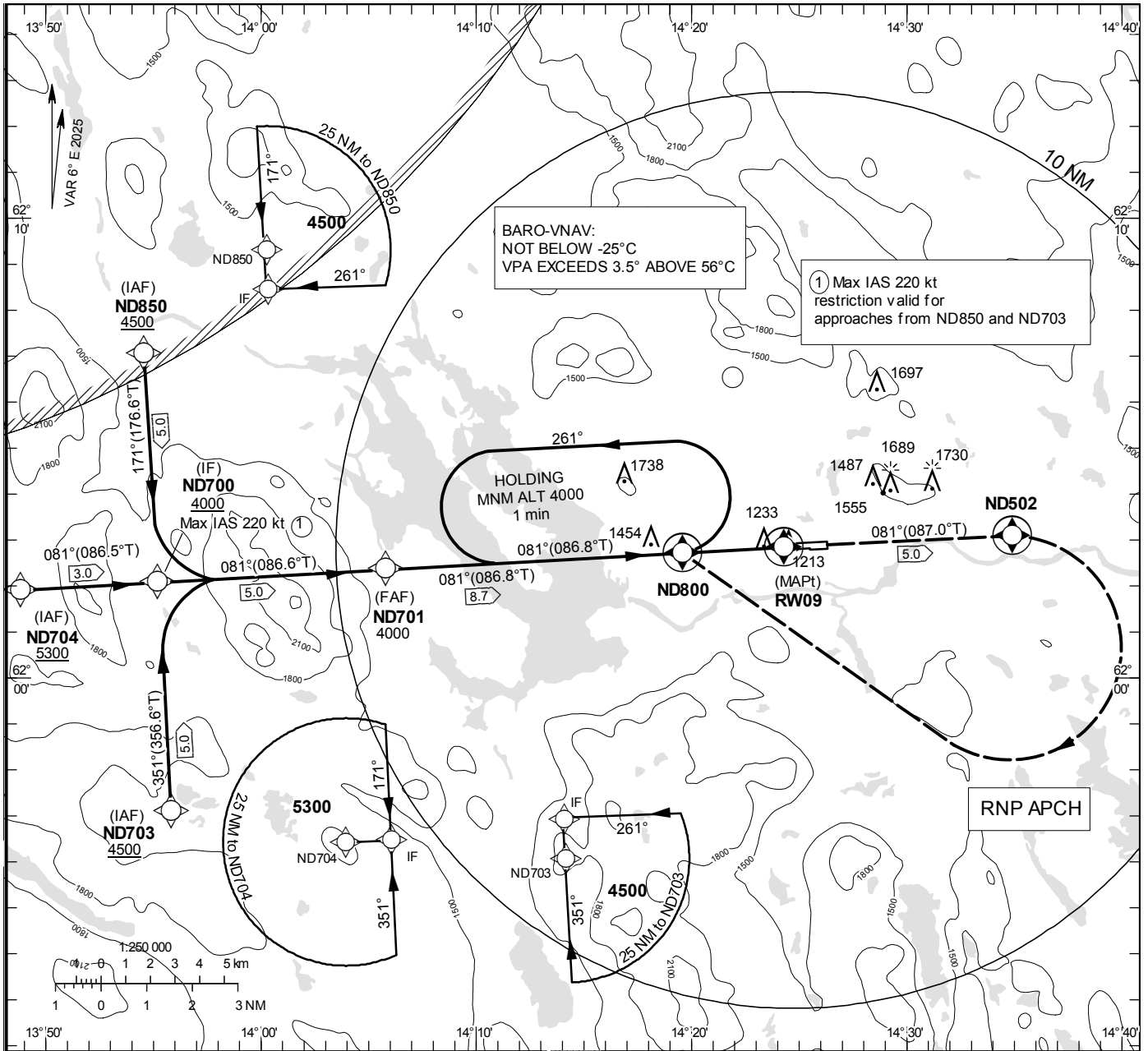
**INSTRUMENT
APPROACH
CHART – ICAO**

THR ELEV 1172.7 ft, AD ELEV 1178 ft
 OCH are related to THR.
 Circling OCH are related to AD ELEV.
 BRG are MAG (True).
 ALT, HGT and ELEV in ft.

SVEG INFORMATION 122.205

RNP RWY 09

EGNOS Ch 87862 E 09A



Cat of ACFT	OCA (H)			Final approach	Distance FAF-MAPt 8.7 NM						
	A	B	C	Dist to RW09 NM	8	7	6	5	4	3	2
LPV	1327 (154)	1337 (164)	1347 (174)	ALT	3770	3450	3130	2810	2500	2180	1860
LNAV/VNAV	1434 (262)	1446 (274)	1466 (294)	GS	kt	80	100	120	140	160	
LNAV	1610 (440)			Rate of descent	ft/min	425	530	635	745	850	
Circling	1850 (680)	2200 (1030)	2640 (1470)								
Circling N RWY	1790 (620)	2030 (860)	2140 (970)								

RNP RWY 09 via ND850

Path Desc	Waypoint Identifier	Fly-over	Course °M(°T)	Dist (NM)	Turn Dir	Altitude	Speed	VPA/RDH	Rec Navaid	Navigation Specification
IF	ND850	-	-	-	-	+4500	-	-	-	RNP APCH
TF	ND700	-	171°(176.6°)	5.0	-	+4000	-220	-	-	RNP APCH

RNP RWY 09 via ND704

Path Desc	Waypoint Identifier	Fly-over	Course °M(°T)	Dist (NM)	Turn Dir	Altitude	Speed	VPA/RDH	Rec Navaid	Navigation Specification
IF	ND704	-	-	-	-	+5300	-	-	-	RNP APCH
TF	ND700	-	081°(086.5°)	3.0	-	+4000	-	-	-	RNP APCH

RNP RWY 09 via ND703

Path Desc	Waypoint Identifier	Fly-over	Course °M(°T)	Dist (NM)	Turn Dir	Altitude	Speed	VPA/RDH	Rec Navaid	Navigation Specification
IF	ND703	-	-	-	-	+4500	-	-	-	RNP APCH
TF	ND700	-	351°(356.6°)	5.0	-	+4000	-220	-	-	RNP APCH

Path Desc	Waypoint Identifier	Fly-over	Course °M(°T)	Dist (NM)	Turn Dir	Altitude	Speed	VPA/RDH	Rec Navaid	Navigation Specification
IF	ND700	-	-	-	-	+4000	-	-	-	RNP APCH
TF	ND701	-	081°(086.6°)	5.0	-	+4000	-	-	-	RNP APCH
TF	RW09	Y	081°(086.8°)	8.7	-	@1223	-	-3.0/50	-	RNP APCH
TF	ND502	Y	081°(087.0°)	5.0	-	-	-	-	-	RNP APCH
DF	ND800	Y	-	-	R	+4000	-	-	-	RNP APCH

Path Desc	Waypoint Identifier	Fly-over	Course °M(°T)	Dist (NM)	Turn Dir	Altitude	Speed	VPA/RDH	Rec Navaid	Navigation Specification
HM	ND800	Y	081°(086.8°)	-	L	+4000	-	-	-	RNP 1

FAS Data Block

RNP RWY 09

Input data

Operation Type	0
SBAS Provider	1 (EGNOS)
Airport Identifier	ESND
Runway	09
Runway Letter	0 (None)
Approach Performance Designator	0
Route Indicator	
Reference Path Data Selector	0
Reference Path Identifier	E09A
LTP/FTP Latitude	620250.4105N
LTP/FTP Longitude	0142417.2795E
LTP/FTP Ellipsoidal Height (metres)	390.6
FPAP Latitude	620253.2390N
Delta FPAP Latitude (seconds)	2.8285
FPAP Longitude	0142614.1905E
Delta FPAP Longitude (seconds)	116.9110
Threshold Crossing Height	50.0
TCH Units Selector	0 (feet)
Glidepath Angle (degrees)	3.00
Course Width (metres)	105.00
Length Offset (metres)	0
HAL (metres)	40.0
VAL (metres)	35.0

Output data

Data Block	10 04 0E 13 05 09 00 00 01 39 30 05 55 B9 A0 1A FF 8E 2E 06 42 23 19 16 00 5E 91 03 F4 01 2C 01 64 00 C8 AF B7 25 FF AD
Calculated CRC Value	B725FFAD

Required Additional Data

ICAO Code	ES
LTP/FTP Orthometric Height (metres)	357.4