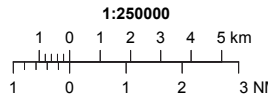


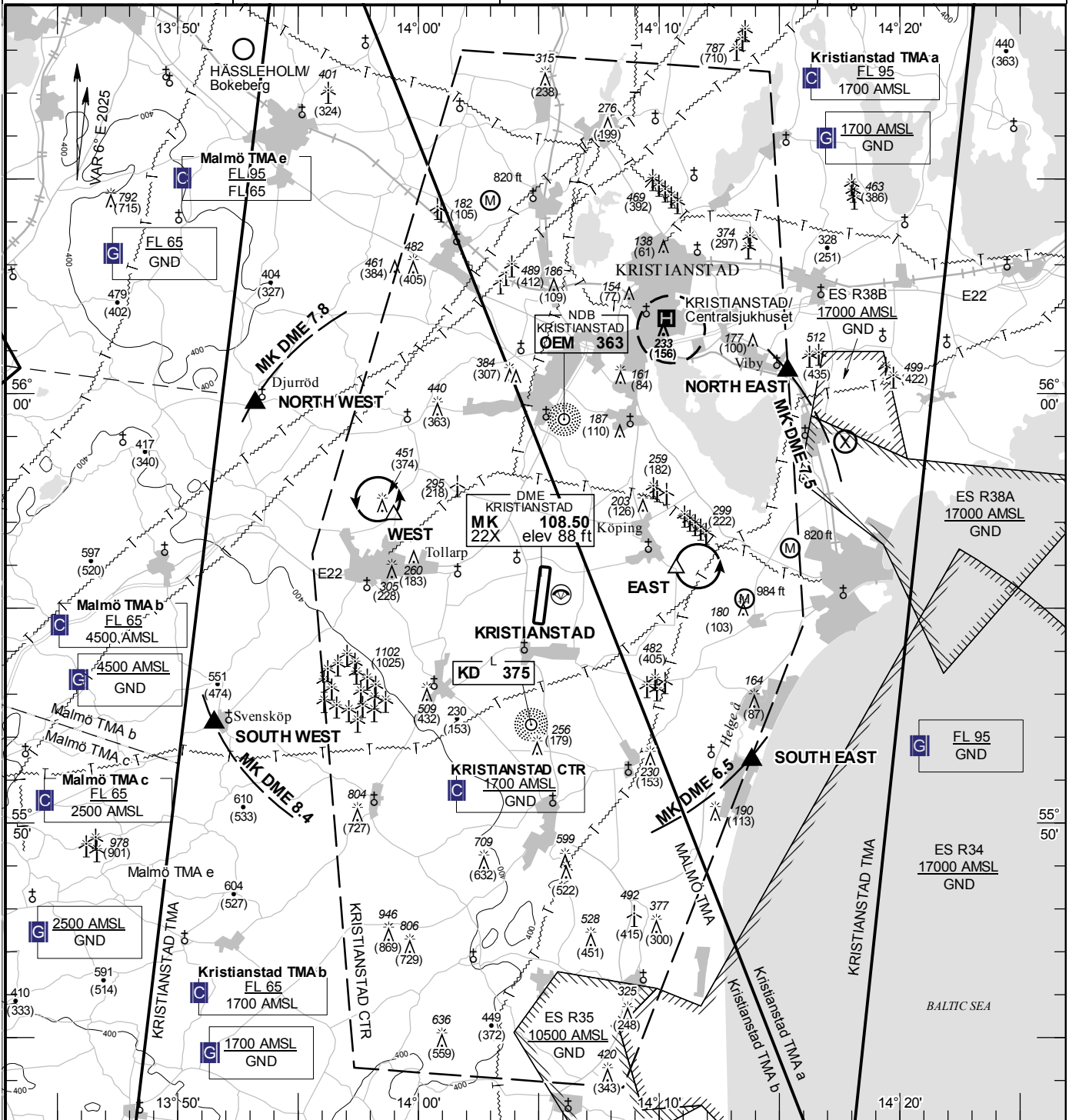
VISUAL APPROACH CHART - ICAO



AD ELEV 77 FEET
 ELEV and ALT in ft
 HGT in ft above AD ELEV
TA 5000 AMSL

KRISTIANSTAD TOWER 129.355

AD 2 ESMK 6-1
KRISTIANSTAD SWEDEN



Communication failure

- SQUAWK 7600
- Enter CTR via NORTH WEST/
SOUTH WEST – Holding WEST
or via NORTH EAST/SOUTH EAST –
Holding EAST at or below 1500 ft AMSL to
traffic circuit.
Transmit blind your intentions.
- Flash LDG-lights and watch TWR for optical
signals.

Remark

Departure RWY 19 right turn. Parajumping area
on airfield.

RWY NR	THR ELEV	PAPI (MEHT)
01	77 ft	Left/3.00° (50 ft)
19	73.8 ft	Left/3.25° (59 ft)

Legend
See GEN 2.3

Entry / exit point

NORTH EAST: East of Viby 560031N 0141520E
SOUTH EAST: Mouth of river Helge å 555127N 0141351E
SOUTH WEST: Svensköp 555219N 0135131E
NORTH WEST: Djurröd 555946N 0135313E

Holding

EAST: Hold east of Köpings, east of point 555555N 0141043E
WEST: Hold north of Tollarp, north west of point 555709N 0135858E

LFV

CHANGE: VAR

AIRAC AMDT 5/2024 **08 AUG 2024**