

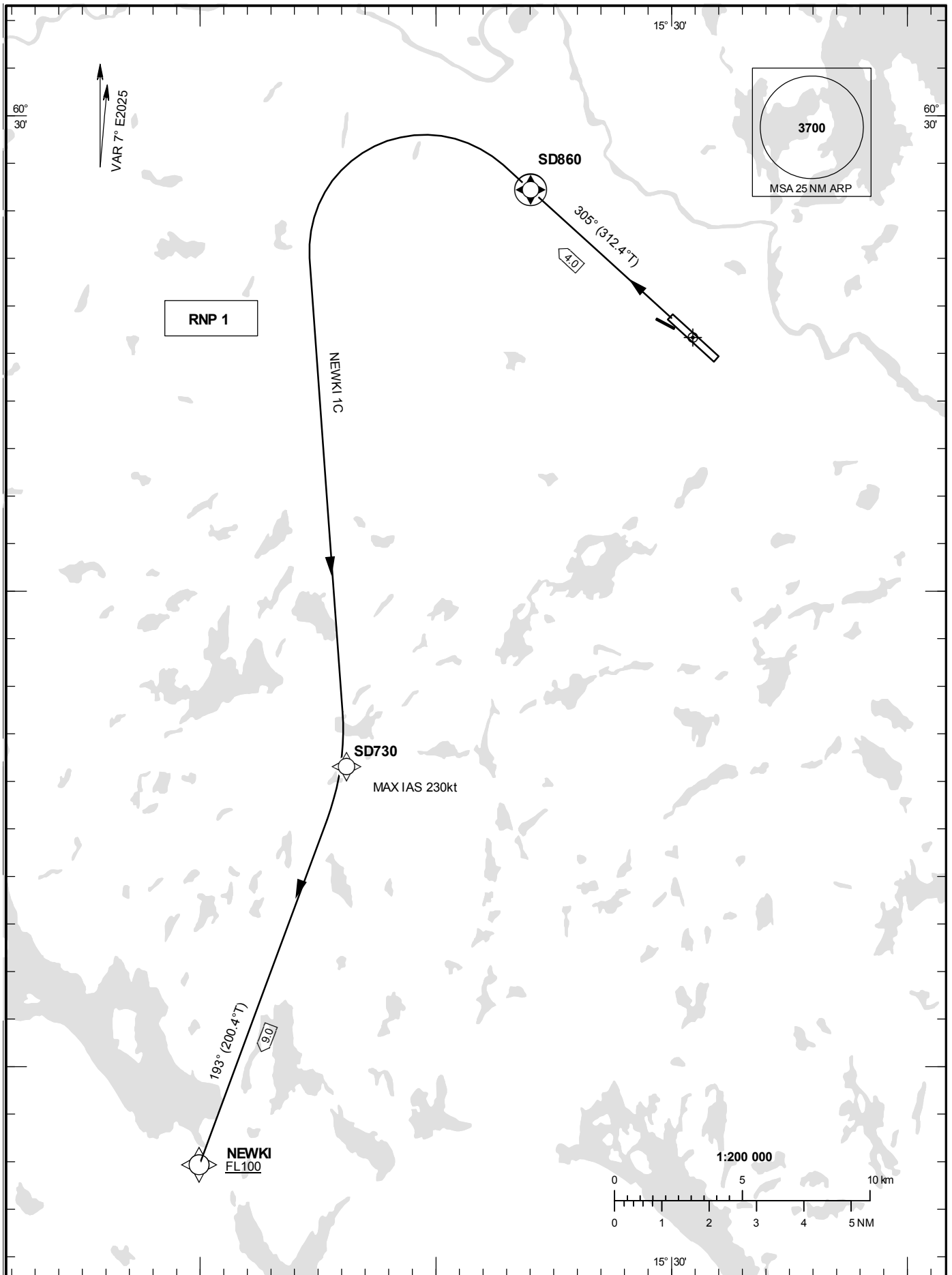
STANDARD INSTRUMENT
DEPARTURE CHART (SID) -
ICAO

HGT and ALT in ft
BRG are MAG (True)
TA 5000 ft AMSL

BORLÄNGE TOWER 127.305

RNP RWY 32

NEWKI 1C



Prescribed Coding of RNP SID for RWY 32

NEWKI 1C

Path Term	Waypoint Identifier	Fly-over	Course °M(°T)	Dist (NM)	Turn Dir	Rest Alts (ft AMSL)	Speed Limits (kt)	VPA/ RDH (°/ft)	Rec Navaid	Navigation Specification
CF	SD860	Y	305°(312.4°)	4.0	-	-	-	-	BOR	RNP 1
DF	SD730	-	-	-	L	-	-230	-	-	RNP 1
TF	NEWKI	-	193°(200.4°)	9.0	-	+FL100	-	-	-	RNP 1

SID instruction: SD860 – SD730 (max IAS 230 kt, until SD730) – NEWKI (FL100 or above)