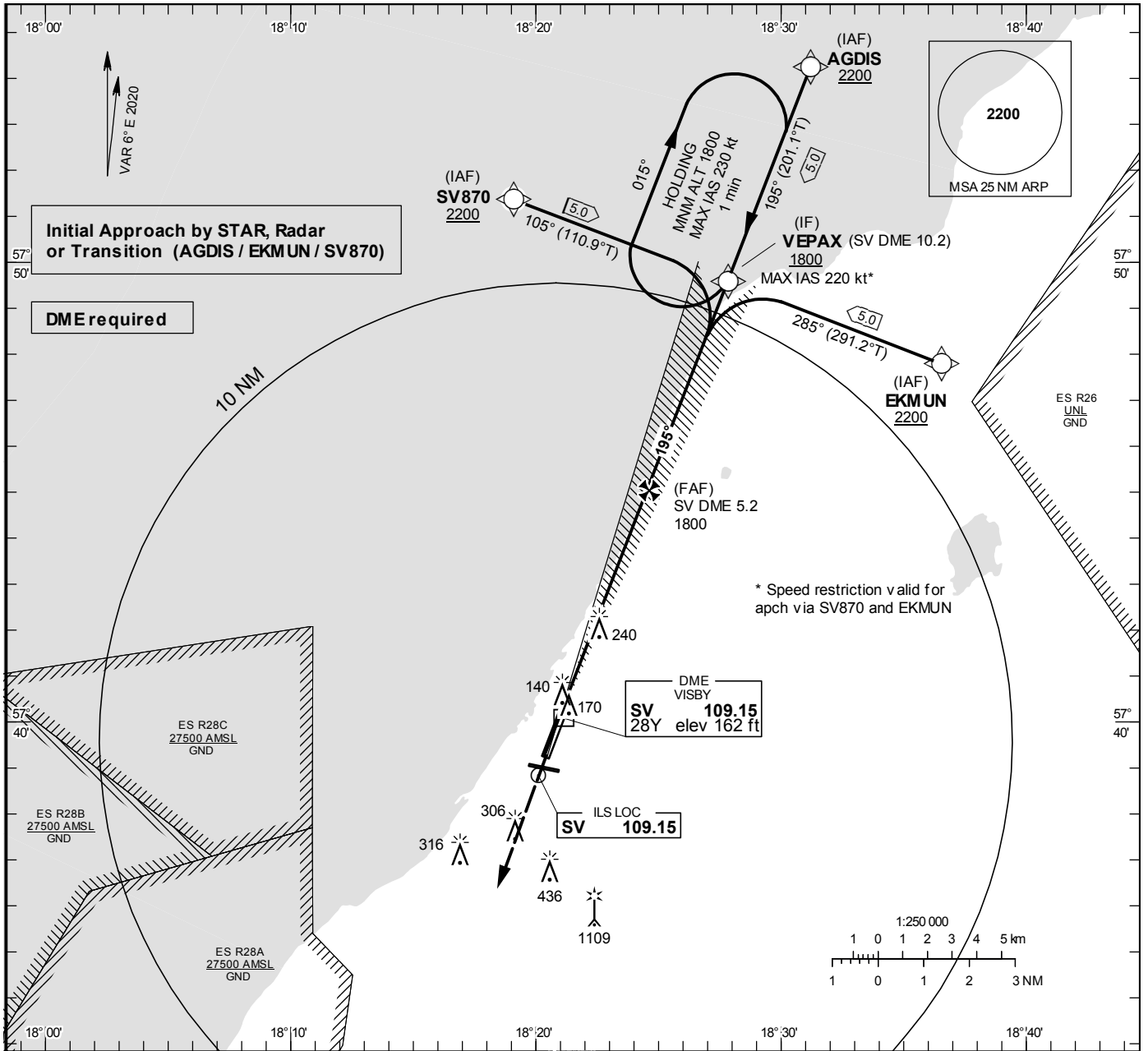


INSTRUMENT APPROACH CHART – ICAO

THR ELEV 137.0 ft, AD ELEV 164 ft
 OCH are related to THR.
 Circling OCH are related to AD ELEV.
 BRG are MAG
 ALT, HGT and ELEV in ft.

VISBY TOWER	120.305
VISBY APPROACH	126.155

ILS z or LOC z RWY 21

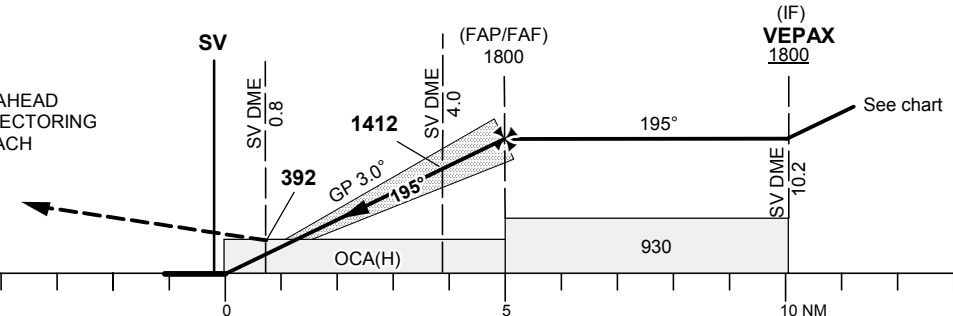


TA 5000 ft AMSL RDH 57.1 ft *Timing not authorized for defining the MAPt

OM replaced by SV DME 4.0
 MM replaced by SV DME 0.8

CLIMB STRAIGHT AHEAD TO 2200, RADAR VECTORED FOR NEW APPROACH

LOC
 FAF at SV DME 5.2 1800
 MAPt at SV DME 0.8
 Descent grad. 5.2%



OCA (H)					Final approach				LOC Distance FAF-MAPt 4.4 NM*				
Cat of ACFT	A	B	C	D	DME SV NM	5	4	3	2	5	4	3	2
Straight-in Approach	CAT I	285(148)	296(159)	304(167)	316(179)	ALT	1731	1412	1094	775			
	LOC	500 (360)				GS	kt	80	100	120	140	160	180
Circling W RWY	630(460)	780(610)	1510(1340)	1510(1340)	Time	min:ss	03:19	02:39	02:13	01:54	01:39	01:28	
	630(460)	630(460)	740(570)	1010(840)	Rate of descent	ft/min	425	530	635	745	850	955	