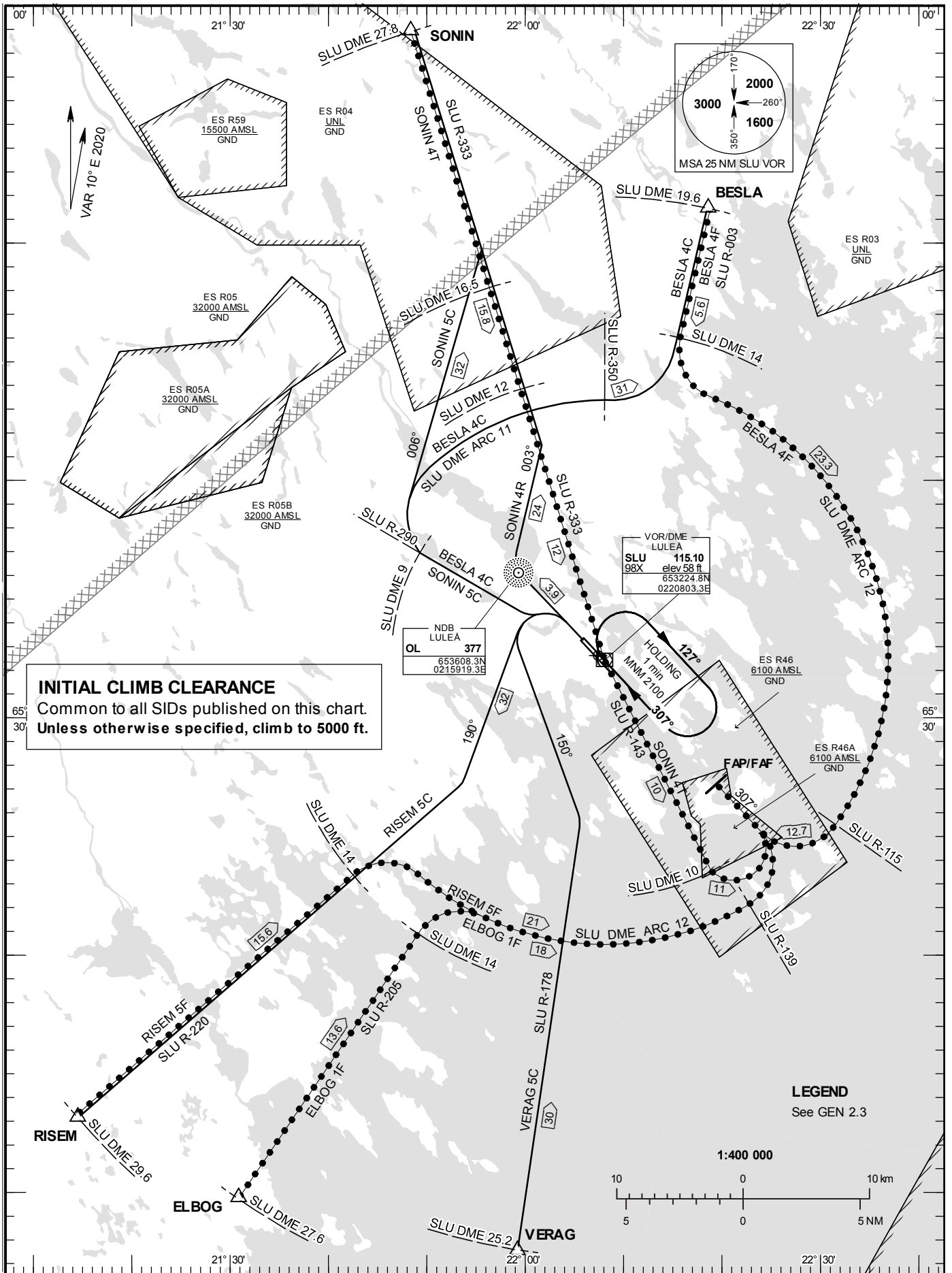


STANDARD INSTRUMENT  
DEPARTURE AND ARRIVAL  
CHART (SID/STAR) - ICAO

HGT and ALT in ft  
BRG are MAG  
TA 5000 ft AMSL

KALLAX TOWER	128.200
KALLAX APPROACH	125.450

RWY 32

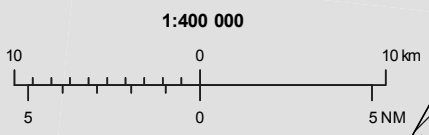


**INITIAL CLIMB CLEARANCE**  
Common to all SIDs published on this chart.  
Unless otherwise specified, climb to 5000 ft.

VOR/DME  
LULEÅ  
SLU  
98X elev 58 ft  
653224.8N  
0220803.3E

NDB  
LULEÅ  
OL 377  
653608.3N  
0215919.3E

**LEGEND**  
See GEN 2.3



## DEPARTURE (SID) RWY 32

### REMARK

MNM climb gradient required by ATC: Aircraft proceeding on SID shall use 6.6 % (400 ft/NM). Aircraft unable to conform to this procedure shall inform ATC accordingly.

### BESLA FOUR CHARLIE DEPARTURE (BESLA 4C)

Straight ahead to 1000 ft. Turn left, intercept SLU R-290 and proceed to SLU DME 9.0. Turn right and proceed on SLU DME ARC 11.0. At SLU R-350 turn left, intercept SLU R-003 and proceed to BESLA.

### RISEM FIVE CHARLIE DEPARTURE (RISEM 5C)

Straight ahead to 1000 ft. Turn left to track 190°, intercept SLU R-220 and proceed to RISEM.

### SONIN FOUR ROMEO DEPARTURE (SONIN 4R)

(For PROP ACFT only.)

Straight ahead to OL, turn right to track 003°, intercept SLU R-333 and proceed to SONIN.

### SONIN FIVE CHARLIE DEPARTURE (SONIN 5C)

Straight ahead to 1000 ft. Turn left, intercept SLU R-290 and proceed to SLU DME 9.0. Turn right to track 006° and intercept SLU R-333 and proceed to SONIN.

### VERAG FIVE CHARLIE DEPARTURE (VERAG 5C)

Straight ahead to 1000 ft. Turn left to track 150°, intercept SLU R-178 and proceed to VERAG.

## ARRIVAL (STAR) RWY 32

### BESLA FOUR FOXTROT ARRIVAL (BESLA 4F)

At BESLA intercept SLU R-003 and proceed to SLU DME 14.0. Turn left and proceed on SLU DME ARC 12. At SLU R-115 turn right and intercept LOC SPA, not below 2100 ft until FAP/FAF.

### ELBOG ONE FOXTROT ARRIVAL (ELBOG 1F)

At ELBOG intercept SLU R-205 and proceed to SLU DME 14.0, not below 2500 ft. Turn right and proceed on SLU DME ARC 12. At SLU R-139, turn left and intercept LOC SPA, not below 2100 ft until FAP/FAF.

### RISEM FIVE FOXTROT ARRIVAL (RISEM 5F)

At RISEM intercept SLU R-220 and proceed to SLU DME 14.0, not below 2500 ft. Turn right and proceed on SLU DME ARC 12. At SLU R-139 turn left and intercept LOC SPA, not below 2100 ft until FAP/FAF.

### SONIN FOUR TANGO ARRIVAL (SONIN 4T)

(For PROP ACFT only.)

At SONIN intercept SLU R-333 and proceed to SLU, not below 2500 ft. At SLU intercept SLU R-143 and proceed to SLU DME 10.0. Turn left to intercept LOC SPA, not below 2100 ft until FAP/FAF.