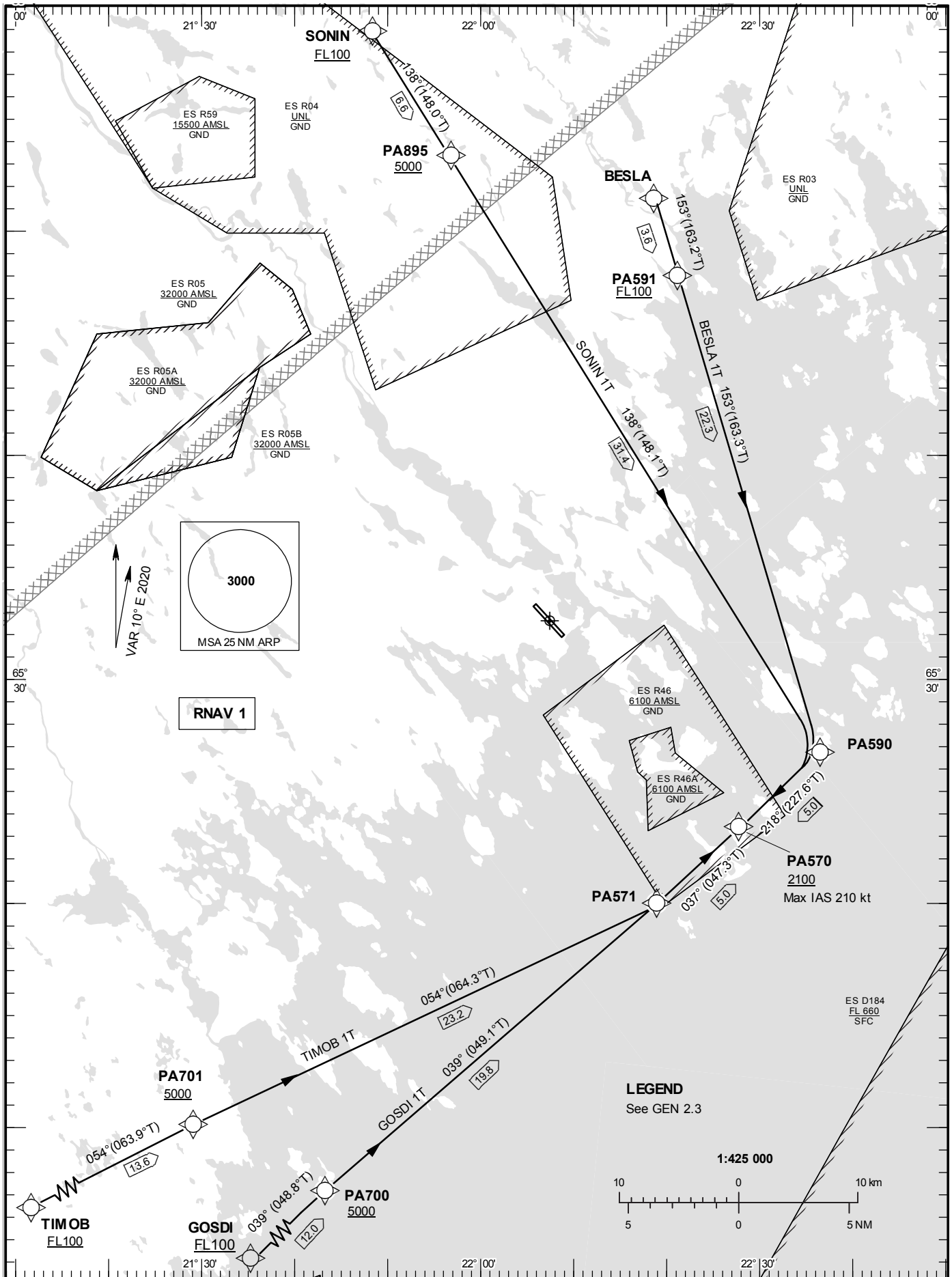


STANDARD INSTRUMENT
ARRIVAL CHART (STAR) -
ICAO

HGT and ALT in ft
BRG are MAG
TA 5000 ft AMSL

KALLAX TOWER	128.200
KALLAX APPROACH	125.450

RNAV (GNSS) STAR RWY 32



Prescribed Coding of RNAV STAR for RWY 32

RNAV 1 for positioning update.

Operators unable to fly RNAV 1 shall inform ATC "UNABLE RNAV STAR". Radar vectors will then be provided.

BESLA 1T

Path Term	Waypoint Identifier	Fly-over	Course °M(°T)	Dist (NM)	Turn Dir	Rest Alts (ft AMSL)	Speed Limits (kt)	VPA/RDH (°/ft)	Rec Navaid	Navigation Specification
IF	BESLA	-	-	-	-	-	-	-	-	RNAV 1
TF	PA591	-	153°(163.2°)	3.6	-	+FL100	-	-	-	RNAV 1
TF	PA590	-	153°(163.3°)	22.3	-	-	-	-	-	RNAV 1
TF	PA570	-	218°(227.6°)	5.0	-	+2100	-210	-	-	RNAV 1

STAR instruction: BESLA – PA591 (FL100 or above) – PA590 – PA570 (2100 ft or above, max IAS 210 kt)

GOSDI 1T

Path Term	Waypoint Identifier	Fly-over	Course °M(°T)	Dist (NM)	Turn Dir	Rest Alts (ft AMSL)	Speed Limits (kt)	VPA/RDH (°/ft)	Rec Navaid	Navigation Specification
IF	GOSDI	-	-	-	-	+FL100	-	-	-	RNAV 1
TF	PA700	-	039°(048.8°)	12.0	-	+5000	-	-	-	RNAV 1
TF	PA571	-	039°(049.1°)	19.8	-	-	-	-	-	RNAV 1
TF	PA570	-	037°(047.3°)	5.0	-	+2100	-210	-	-	RNAV 1

STAR instruction: GOSDI (FL100 or above) – PA700 (5000 ft or above) – PA571 – PA570 (2100 ft or above, max IAS 210 kt)

SONIN 1T

Path Term	Waypoint Identifier	Fly-over	Course °M(°T)	Dist (NM)	Turn Dir	Rest Alts (ft AMSL)	Speed Limits (kt)	VPA/RDH (°/ft)	Rec Navaid	Navigation Specification
IF	SONIN	-	-	-	-	+FL100	-	-	-	RNAV 1
TF	PA895	-	138°(148.0°)	6.6	-	+5000	-	-	-	RNAV 1
TF	PA590	-	138°(148.1°)	31.4	-	-	-	-	-	RNAV 1
TF	PA570	-	218°(227.6°)	5.0	-	+2100	-210	-	-	RNAV 1

STAR instruction: SONIN (FL100 or above) – PA895 (5000 ft or above) – PA590 – PA570 (2100 ft or above, max IAS 210 kt)

TIMOB 1T

Path Term	Waypoint Identifier	Fly-over	Course °M(°T)	Dist (NM)	Turn Dir	Rest Alts (ft AMSL)	Speed Limits (kt)	VPA/RDH (°/ft)	Rec Navaid	Navigation Specification
IF	TIMOB	-	-	-	-	+FL100	-	-	-	RNAV 1
TF	PA701	-	054°(063.9°)	13.6	-	+5000	-	-	-	RNAV 1
TF	PA571	-	054°(064.3°)	23.2	-	-	-	-	-	RNAV 1
TF	PA570	-	037°(047.3°)	5.0	-	+2100	-210	-	-	RNAV 1

STAR instruction: TIMOB (FL100 or above) – PA701 (5000 ft or above) – PA571 – PA570 (2100 ft or above, max IAS 210 kt)