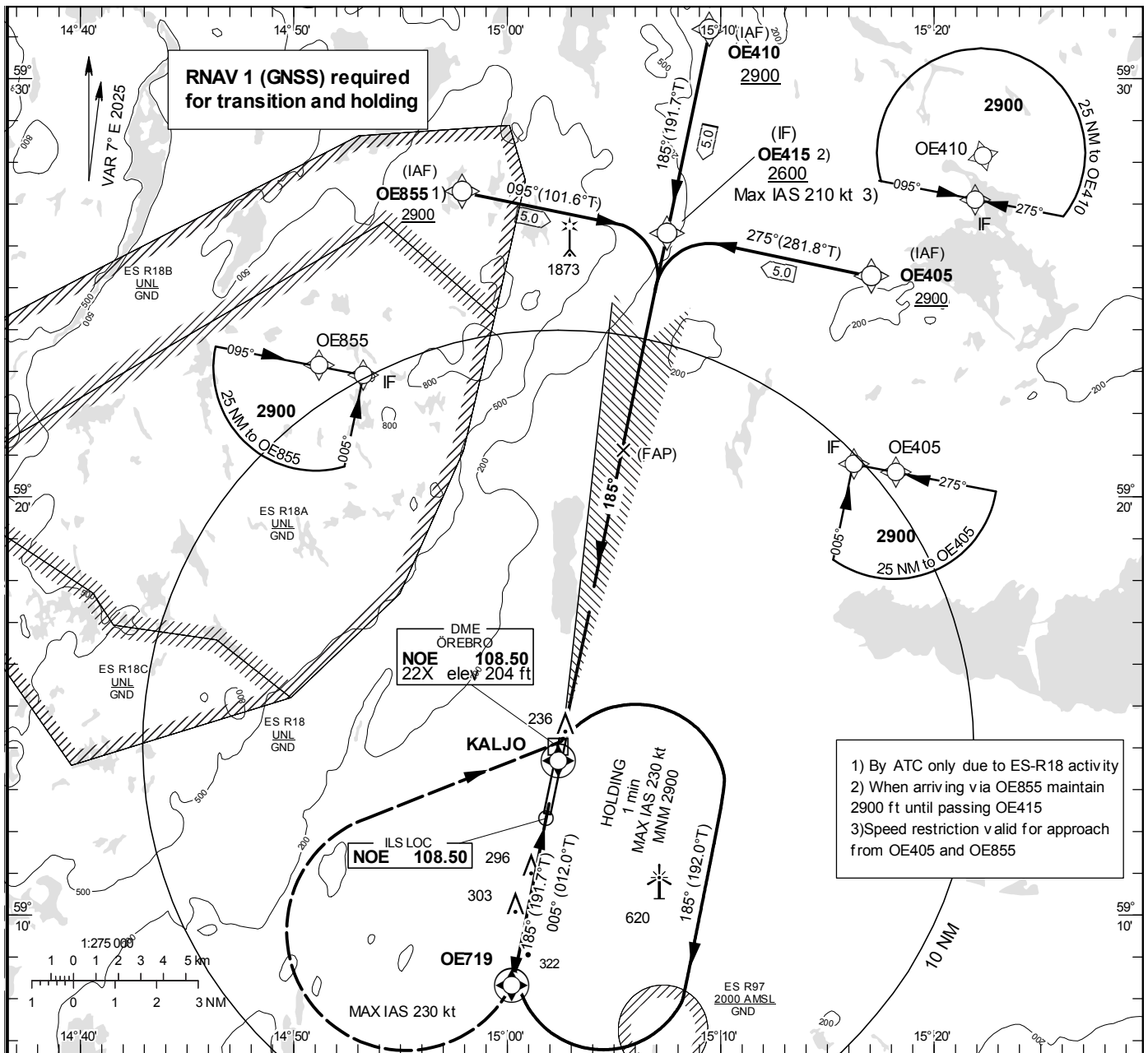


ILS z or LOC z RWY 19

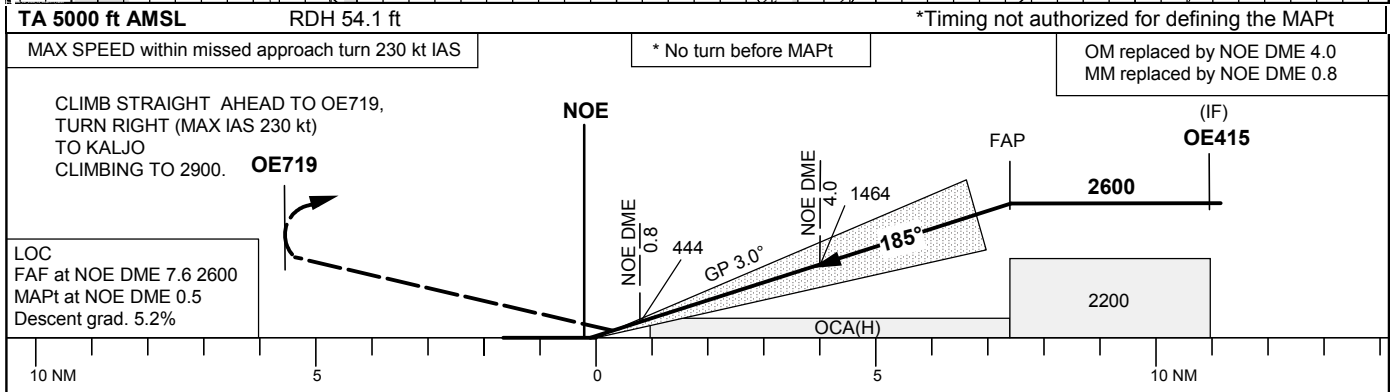
ÖREBRO TOWER 120.280

THR ELEV 191.1 ft, AD ELEV 192 ft
 OCH are related to THR.
 Circling OCH are related to AD ELEV.
 BRG are MAG
 ALT. HGT and ELEV in ft.

INSTRUMENT
 APPROACH
 CHART – ICAO



1) By ATC only due to ES-R18 activity
 2) When arriving via OE855 maintain 2900 ft until passing OE415
 3) Speed restriction valid for approach from OE405 and OE855



| OCA (H) | | | | | | Final approach | | | | | | | |
|----------------------|-----------|-----------|------------|-----------|-----------|-------------------------------|--------|------|------|------|------|------|-----|
| Cat of ACFT | A | B | C | D | DL | LOC Distance FAF-MAPT 7.1 NM* | | | | | | | |
| | | | | | | NOE DME NM | 2 | 3 | 4 | 5 | 6 | 7 | |
| Straight-in Approach | Cat I | 354 (162) | 361 (169) | 373 (181) | 383 (191) | 387 (195) | 820 | 1140 | 1460 | 1780 | 2100 | 2420 | |
| | LOC | 570 (380) | | | | | GS | kt | 80 | 100 | 120 | 140 | 160 |
| Circling | 600 (410) | 690 (500) | 1020 (830) | | | Rate of descent | ft/min | 425 | 535 | 635 | 745 | 850 | 955 |