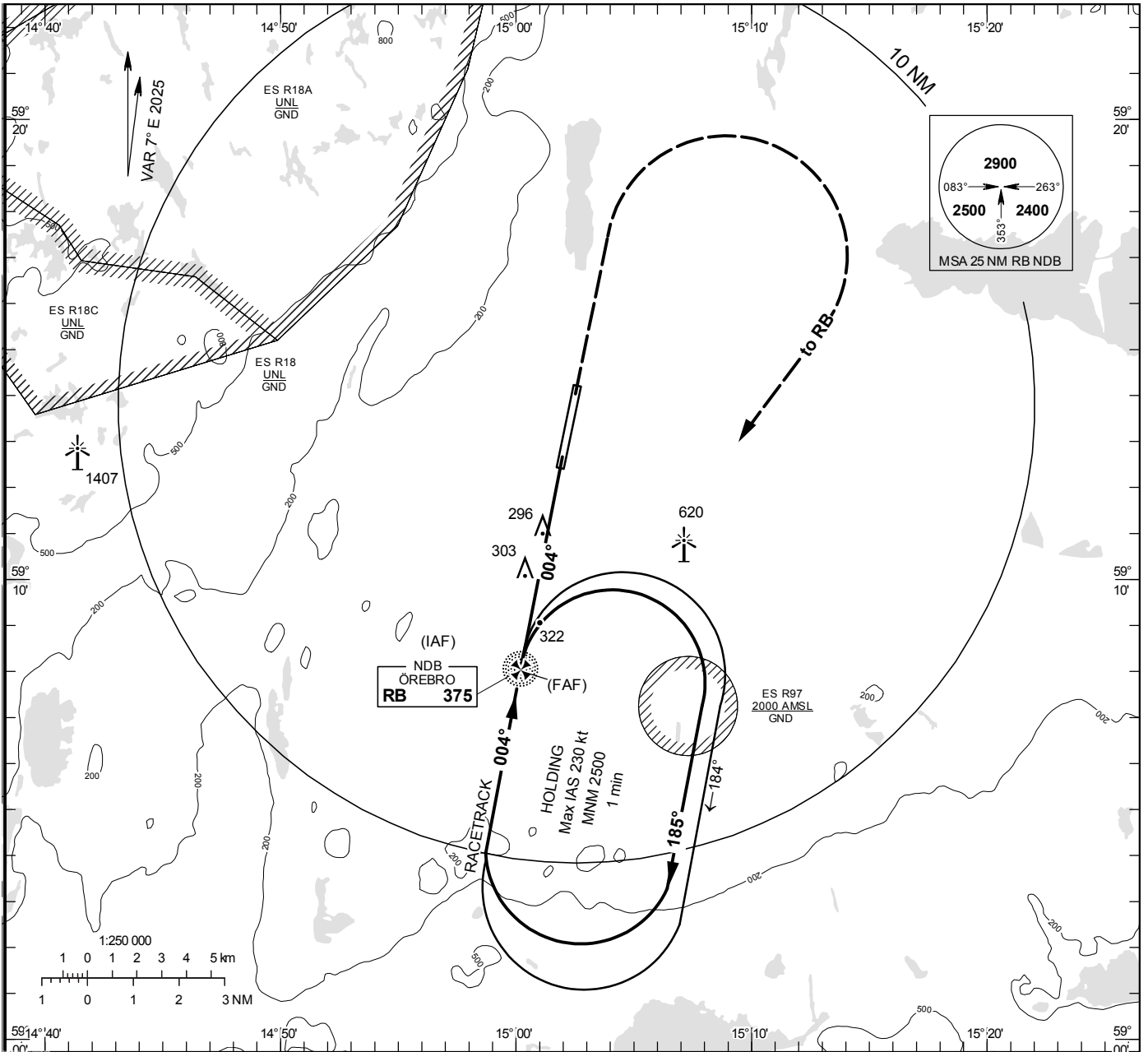


**INSTRUMENT
APPROACH
CHART – ICAO**

THR ELEV 161.3 ft, AD ELEV 192 ft
 OCH are related to THR.
 Circling OCH are related to AD ELEV.
 BRG are MAG
 ALT. HGT and ELEV in ft.

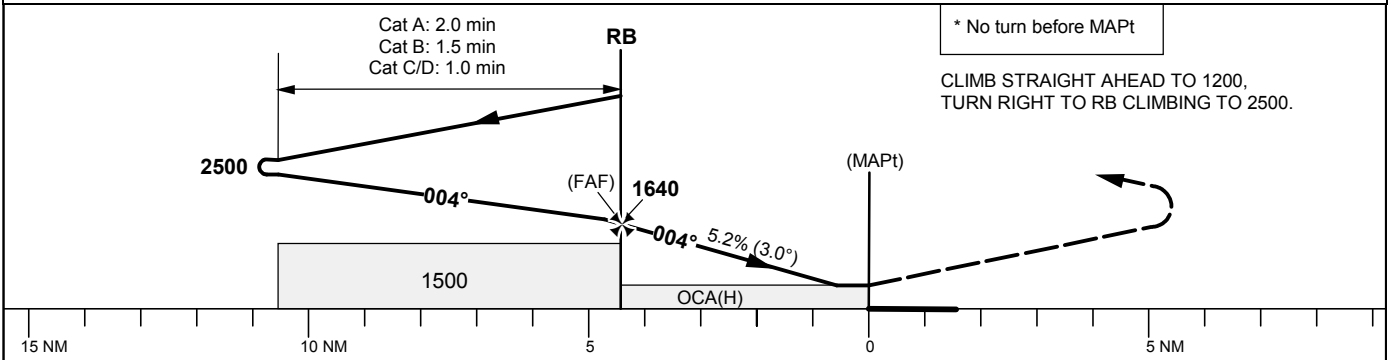
ÖREBRO TOWER 120.280

NDB RWY 01



TA 5000 ft AMSL

Final APCH line 1° offset



Cat of ACFT	OCA (H)				Final approach		Distance FAF-MAPt 4.5 NM*					
	A	B	C	D	DME NOE NM	6	5	4	3			
Straight-in Approach	570 (410)				ALT	1620	1300	980	660			
Circling	600 (410)	690 (500)	1020 (830)		GS	kt	80	100	120	140	160	180
					Time	min:s	3:23	2:42	2:15	1:56	1:41	1:30
					Rate of descent	ft/min	425	535	635	745	850	955