

**VISUAL APPROACH CHART - ICAO**

1:250000  
1 0 1 2 3 4 5 km  
1 0 1 2 3 NM

**AD ELEV 140 FEET**

ELEV and ALT in ft  
HGT in ft above AD ELEV

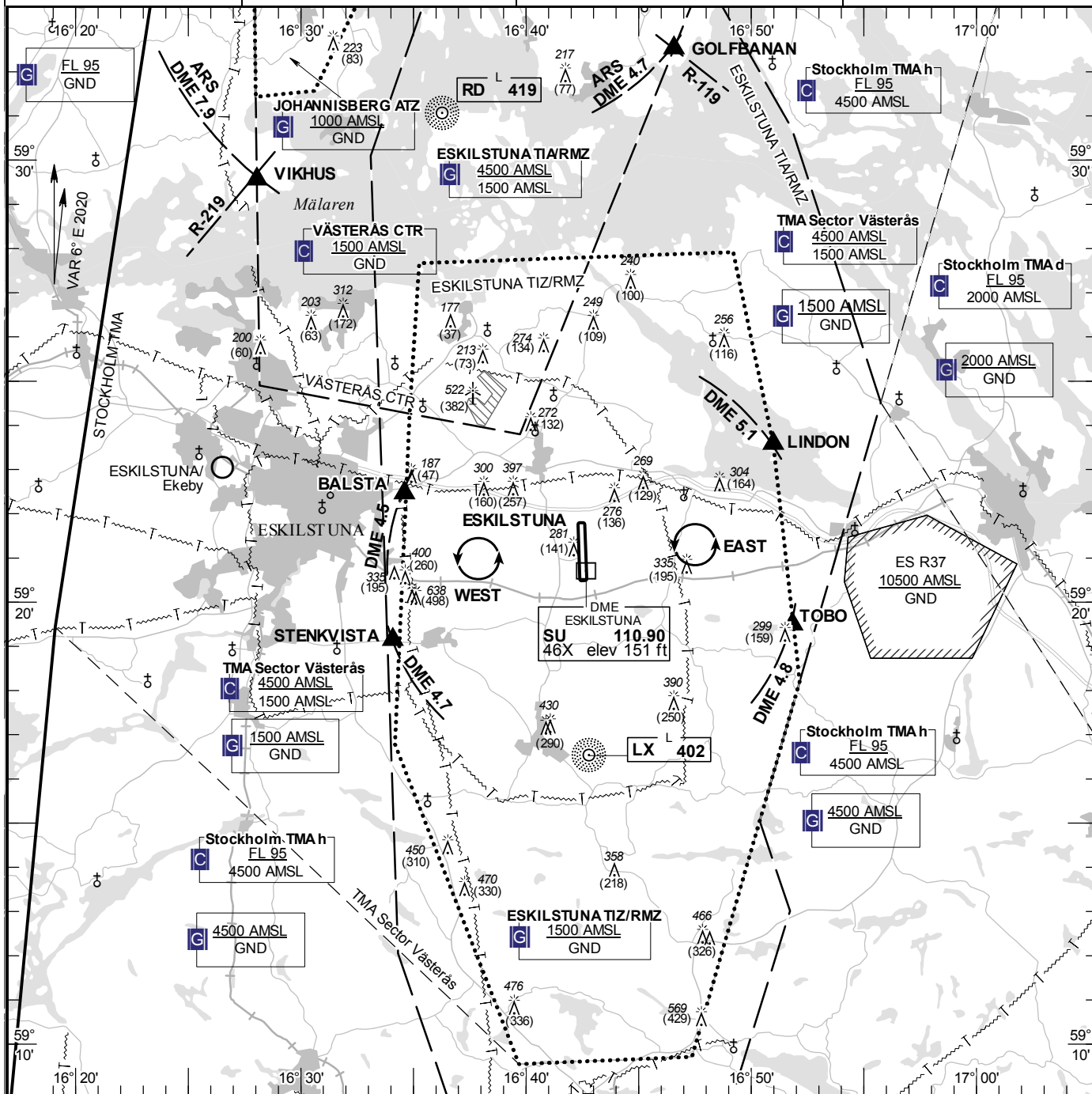
**TA 5000 AMSL**

**ESKILSTUNA INFORMATION**

**126.855**

**AD 2 ESSU 6-1**

**ESKILSTUNA SWEDEN**



**Communication failure**

NIL

**Remark**

NIL

**Warning**

During APCH RWY 36 risk for mix-up and LDG on other RWY short SW of THR 36.

RWY NR	THR ELEV	APAPI (MEHT)
18	129 ft	APAPI Left/2.86° (50 ft)
36	130.4 ft	APAPI Left/3.00° (50 ft)

**Entry / exit point**

LINDON	592334N 0165059E
TOBO	591929N 0165150E
STENKVISTA	591908N 0163405E
BALSTA	592227N 0163436E

**Holding**

EAST: Hold east of road  
WEST: Hold west of cross road

**Legend**

See GEN 2.3