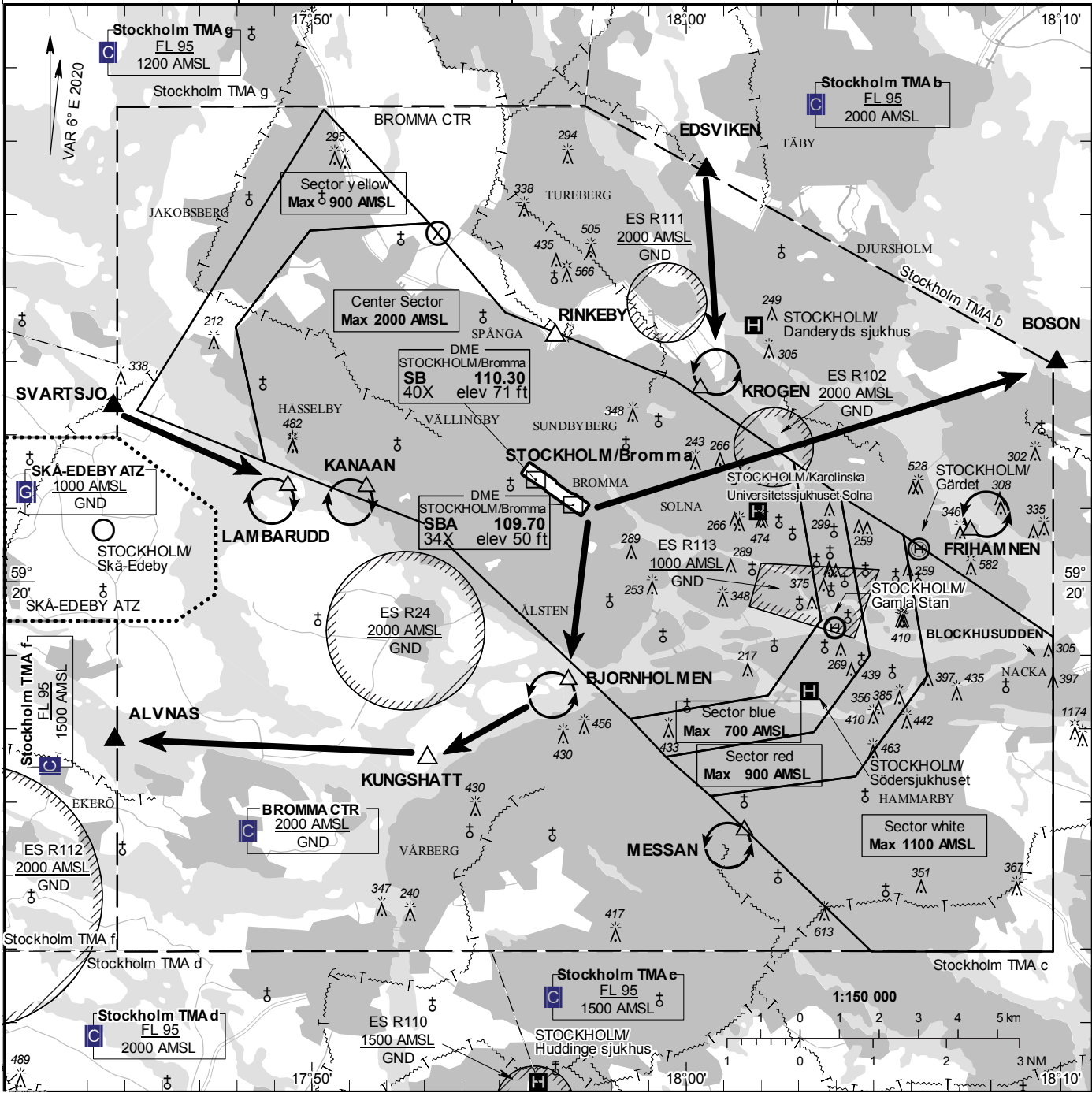



AIP SWEDEN VFR-FLIGHT WITHIN BROMMA CTR (ref AD 2 ESSB 2.22)	AD ELEV 47 FEET	BROMMA TOWER 118.105	AD 2 ESSB 6-3 RWY 12
	ELEV and ALT in ft HGT in ft above AD ELEV	BROMMA GROUND 121.605 BROMMA ATIS 122.455	



<p>Communication failure</p> <p>Aircraft outside CTR having received no clearance should land at an aerodrome outside CTR and obtain clearance by telephone for further flight to STOCKHOLM/Bromma.</p> <p>If no suitable aerodrome is within reach;</p> <ol style="list-style-type: none"> SQUAWK 7600 Depending on probable active RWY; For RWY 30 enter CTR via ALVNAS – Holding BJORNHOLMEN at or below 1500 ft AMSL to join traffic circuit on downwind leg. For RWY 12 enter CTR via SVARTSJO – Holding KANAAN at or below 1500 ft AMSL to join right traffic circuit on downwind leg. Transmit blind your intentions. Flash LDG-lights and watch TWR for optical signals. <p>Remark</p> <p>Obstacles below 197 ft AGL not shown in CTR</p>	<p>Entry / exit point</p> <p>EDSVIKEN 592536N 0180032E BOSON 592259N 0180954E ALVNAS 591750N 0174444E SVARTSJO 592223N 0174442E</p> <p>Reporting point</p> <p>RINKEBY 592320N 0175630E KUNGSHTATT 591735N 0175305E</p> <p>Legend</p> <p>See GEN 2.3</p> <p> Special procedures for balloon flight, see AD 2 ESSB 2.22.6.4</p>	<p>Holding</p> <p>KROGEN: Hold over intersection between roads E18 and E4, north east of point 592237N 0180023E</p> <p>FRIHAMNEN: Hold over the harbour Frihamnen, north east of point 592041N 0180735E</p> <p>MESSAN: Hold over the exhibition hall, south west of point 591636N 0180133E</p> <p>BJORNHOLMEN: Hold over Björnholmen, south west of point 591839N 0175651E</p> <p>KANAAN: Hold over the swimming area Kanaanbadet, south west of point 592117N 0175127E</p> <p>LAMBARUDD: Hold over Lambarudd, south west of point 592118N 0174921E</p>
--	---	--