

VISUAL APPROACH CHART - ICAO

1:250000



AD ELEV 705 FEET

ELEV and ALT in ft
HGT in ft above AD ELEV

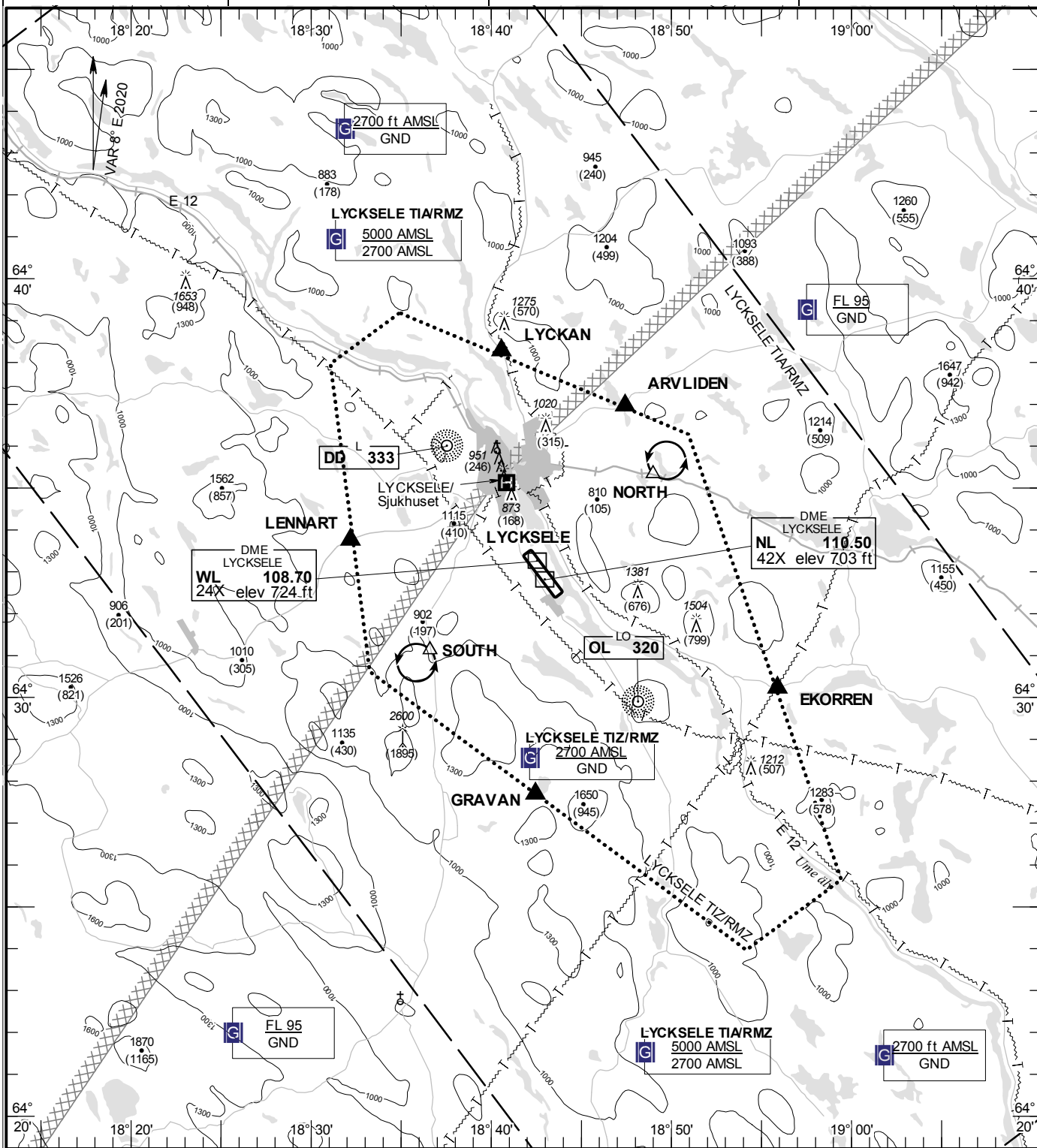
TA 5000 AMSL

LYCKSELE INFORMATION

122.230

AD 2 ESNL 6-1

LYCKSELE SWEDEN



Communication failure

NIL

Remark

NIL

RWY NR	THR ELEV	PAPI (MEHT)
14	704.5 ft	Left/3.50° (50 ft)
32	689 ft	Left/3.00° (50 ft)

Entry / exit point

LYCKAN	643816N 0184034E
ARVLIDEN	643657N 0184726E
EKORREN	643013N 0185553E
GRAVAN	642741N 0184227E
LENNART	643345N 0183211E

Holding

- NORTH:** Hold over railway crossing, north east of point 643519N 0184859E
- SOUTH:** Hold over crossroad, south west of point 643107N 0183636E

Legend
See GEN 2.3

LFV

CHANGE: OBST

AIRAC AMDT 3/2024 **16 MAY 2024**