

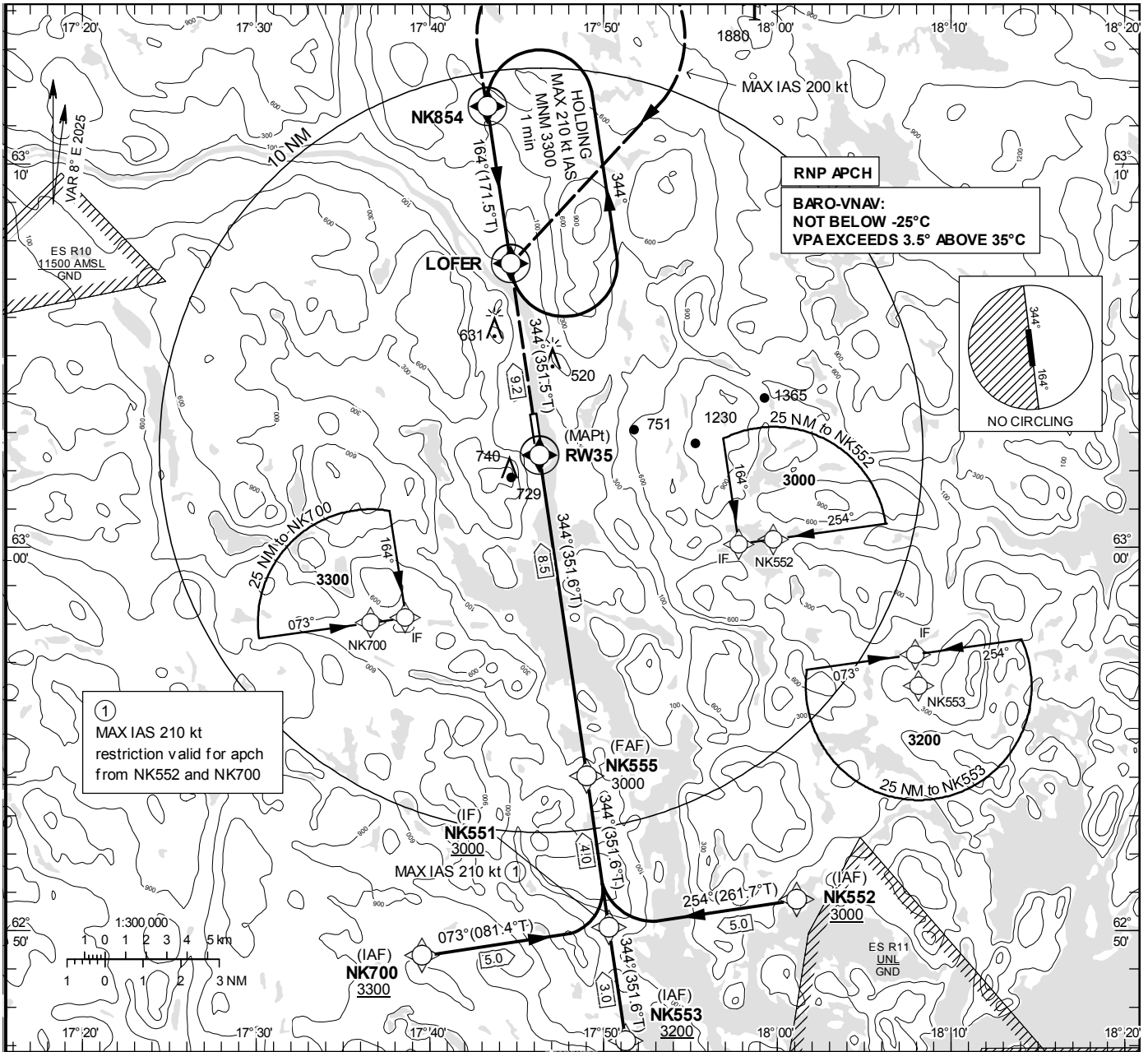
INSTRUMENT APPROACH CHART – ICAO

THR ELEV 23.5 ft, AD ELEV 36 ft
 OCH are related to THR.
 BRG are MAG (True).
 ALT, HGT and ELEV in ft.

KRAMFORS INFORMATION
 122.155

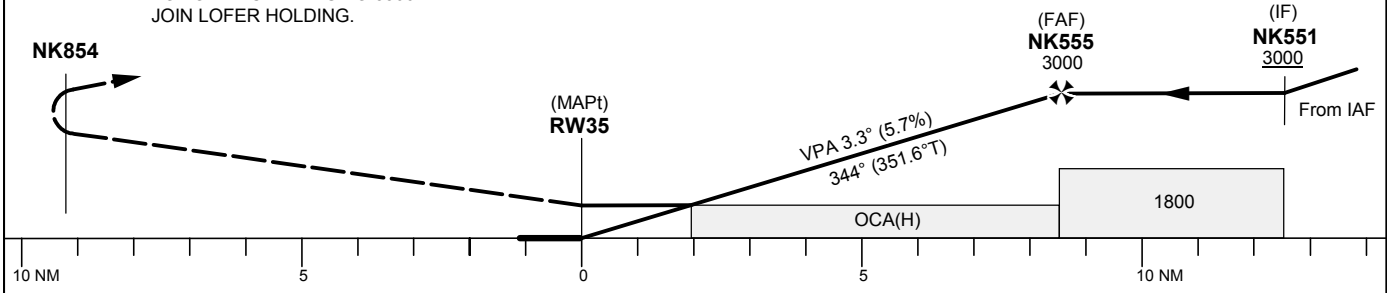
RNP RWY 35

EGNOS Ch 86162 E 35A



TA 5000 ft AMSL RDH 50 ft

CLIMB TO NK854, TURN RIGHT (MAX IAS 200 kt)
 TO LOFER CLIMBING TO 3300 AND
 JOIN LOFER HOLDING.



Cat of ACFT	OCA (H)				Final approach		Distance FAF-MAPT 8.5 NM					
	A	B	C	D	Dist to RW35	ALT	3	4	5	6	7	8
LPV	315(292)	328(305)	336(313)	346(323)	ALT	1110	1450	1800	2140	2490	2830	
LNAV/VNAV	769(746)	771(748)	773(750)	775(752)	GS	kt	80	100	120	140	160	180
LNAV	800(780)				Rate of descent	ft/min	460	575	690	805	920	1035
Circling E RWY	820(790)	1050(1020)	1630(1600)	1760(1730)								

RNP RWY 35 via NK552

Path Desc	Waypoint Identifier	Fly-over	Course °M(°T)	Dist (NM)	Turn Dir	Altitude	Speed	VPA/RDH	Rec Navaid	Navigation Specification
IF	NK552	-	-	-	-	+3000	-	-	-	RNP APCH
TF	NK551	-	254°(261.7°)	5.0	-	+3000	-210	-	-	RNP APCH

RNP RWY 35 via NK553

Path Desc	Waypoint Identifier	Fly-over	Course °M(°T)	Dist (NM)	Turn Dir	Altitude	Speed	VPA/RDH	Rec Navaid	Navigation Specification
IF	NK553	-	-	-	-	+3200	-	-	-	RNP APCH
TF	NK551	-	344°(351.6°)	3.0	-	+3000	-	-	-	RNP APCH

RNP RWY 35 via NK700

Path Desc	Waypoint Identifier	Fly-over	Course °M(°T)	Dist (NM)	Turn Dir	Altitude	Speed	VPA/RDH	Rec Navaid	Navigation Specification
IF	NK700	-	-	-	-	+3300	-	-	-	RNP APCH
TF	NK551	-	073°(081.4°)	5.0	-	+3000	-210	-	-	RNP APCH

Path Desc	Waypoint Identifier	Fly-over	Course °M(°T)	Dist (NM)	Turn Dir	Altitude	Speed	VPA/RDH	Rec Navaid	Navigation Specification
IF	NK551	-	-	-	-	+3000	-	-	-	RNP APCH
TF	NK555	-	344°(351.6°)	4.0	-	@3000	-	-	-	RNP APCH
TF	RW35	Y	344°(351.6°)	8.5	-	@74	-	-3.25/50	-	RNP APCH
TF	NK854	Y	344°(351.5°)	9.2	-	-	-	-	-	RNP APCH
DF	LOFER	Y	-	-	R	+3300	-200	-	-	RNP APCH

ESNK Holding LOFER

Path Desc	Waypoint Identifier	Fly-over	Course °M(°T)	Dist (NM)	Turn Dir	Altitude	Speed	VPA/RDH	Rec Navaid	Navigation Specification
HM	LOFER	Y	164°(171.5°)	-	L	+3300	-210	-	-	RNP 1

FAS Data Block

RNP RWY 35

Input data

Operation Type	0
SBAS Provider	1 (EGNOS)
Airport Identifier	ESNK
Runway	35
Runway Letter	0 (None)
Approach Performance Designator	0
Route Indicator	
Reference Path Data Selector	0
Reference Path Identifier	E35A
LTP/FTP Latitude	630222.9940N
LTP/FTP Longitude	0174618.3560E
LTP/FTP Ellipsoidal Height (metres)	33.1
FPAP Latitude	630328.3595N
Delta FPAP Latitude (seconds)	65.3655
FPAP Longitude	0174556.9445E
Delta FPAP Longitude (seconds)	-21.4115
Threshold Crossing Height	50.0
TCH Units Selector	0 (feet)
Glidepath Angle (degrees)	3.25
Course Width (metres)	105.00
Length Offset (metres)	48
HAL (metres)	40.0
VAL (metres)	50.0

Output data

Data Block	10 0B 0E 13 05 23 00 00 01 35 33 05 24 C0 0D 1B E8 76 A0 07 4B 15 AB FE 01 B9 58 FF F4 01 45 01 64 06 C8 FA 5D A5 95 95
Calculated CRC Value	5DA59595

Required Additional Data

ICAO Code	ES
LTP/FTP Orthometric Height (metres)	7.2