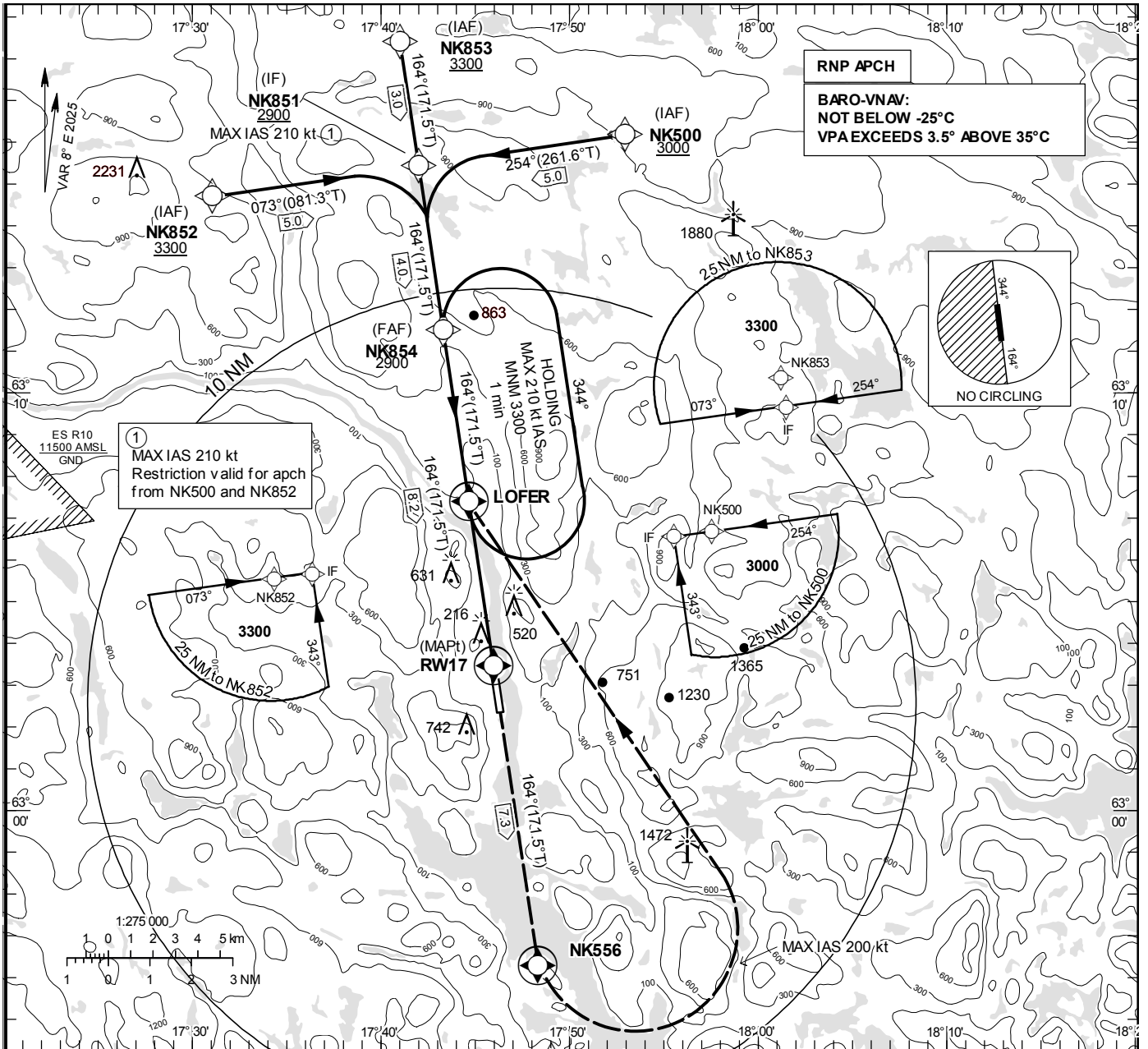


INSTRUMENT APPROACH CHART – ICAO

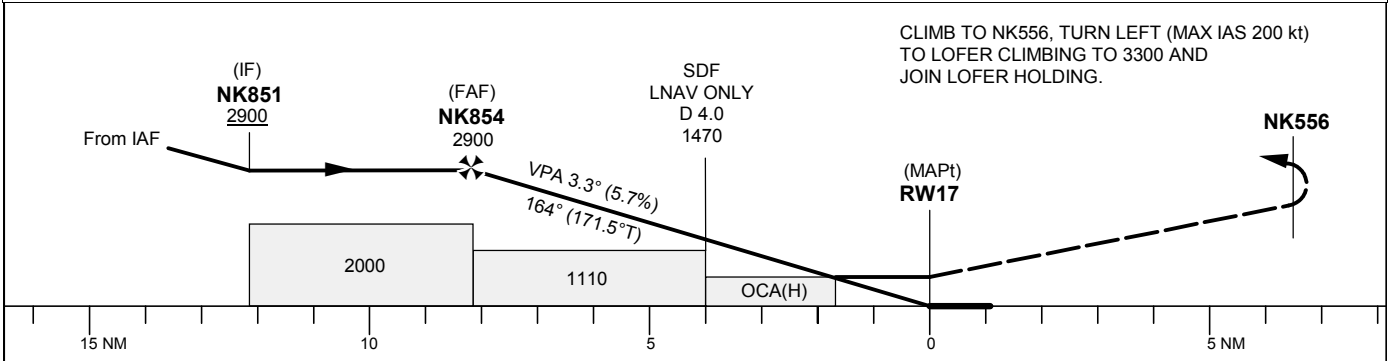
THR ELEV 35 ft, AD ELEV 36 ft
 OCH are related to THR.
 BRG are MAG (True).
 ALT, HGT and ELEV in ft.

KRAMFORS INFORMATION
 122.155

RNP RWY 17
 EGNOS Ch 60022 E 17A



TA 5000 ft AMSL RDH 50 ft



Cat of ACFT	OCA (H)				Final approach Dist to RW17	Distance FAF-MAPT 8.2 NM						
	A	B	C	D		8	7	6	5	4	3	
LPV	349(314)	362(327)	370(335)	380(345)	ALT	2850	2500	2160	1810	1470	1120	
LNAV/VNAV	701(666)	707(672)	712(677)	717(682)	GS	kt	80	100	120	140	160	180
LNAV	780(750)				Rate of descent	ft/min	460	575	690	805	920	1035
Circling E RWY	820(790)	1050(1020)	1630(1600)	1760(1730)								

RNP RWY 17 via NK852

Path Desc	Waypoint Identifier	Fly-over	Course °M(°T)	Dist (NM)	Turn Dir	Altitude	Speed	VPA/RDH	Rec Navaid	Navigation Specification
IF	NK852	-	-	-	-	+3300	-	-	-	RNP APCH
TF	NK851	-	073°(081.3°)	5.0	-	+2900	-210	-	-	RNP APCH

RNP RWY 17 via NK853

Path Desc	Waypoint Identifier	Fly-over	Course °M(°T)	Dist (NM)	Turn Dir	Altitude	Speed	VPA/RDH	Rec Navaid	Navigation Specification
IF	NK853	-	-	-	-	+3300	-	-	-	RNP APCH
TF	NK851	-	164°(171.5°)	3.0	-	+2900	-	-	-	RNP APCH

RNP RWY 17 via NK500

Path Desc	Waypoint Identifier	Fly-over	Course °M(°T)	Dist (NM)	Turn Dir	Altitude	Speed	VPA/RDH	Rec Navaid	Navigation Specification
IF	NK500	-	-	-	-	+3000	-	-	-	RNP APCH
TF	NK851	-	254°(261.6°)	5.0	-	+2900	-210	-	-	RNP APCH

Path Desc	Waypoint Identifier	Fly-over	Course °M(°T)	Dist (NM)	Turn Dir	Altitude	Speed	VPA/RDH	Rec Navaid	Navigation Specification
IF	NK851	-	-	-	-	+2900	-	-	-	RNP APCH
TF	NK854	-	164°(171.5°)	4.0	-	@2900	-	-	-	RNP APCH
TF	RW17	Y	164°(171.5°)	8.2	-	@85	-	-3.25/50	-	RNP APCH
TF	NK556	Y	164°(171.5°)	7.3	-	-	-	-	-	RNP APCH
DF	LOFER	Y	-	-	L	+3300	-200	-	-	RNP APCH

ESNK Holding LOFER

Path Desc	Waypoint Identifier	Fly-over	Course °M(°T)	Dist (NM)	Turn Dir	Altitude	Speed	VPA/RDH	Rec Navaid	Navigation Specification
HM	LOFER	Y	164°(171.5°)	-	L	+3300	-210	-	-	RNP 1

FAS Data Block

RNP RWY 17

Input data

Operation Type	0
SBAS Provider	1 (EGNOS)
Airport Identifier	ESNK
Runway	17
Runway Letter	0 (None)
Approach Performance Designator	0
Route Indicator	
Reference Path Data Selector	0
Reference Path Identifier	E17A
LTP/FTP Latitude	630326.9080N
LTP/FTP Longitude	0174557.3860E
LTP/FTP Ellipsoidal Height (metres)	36.8
FPAP Latitude	630222.9940N
Delta FPAP Latitude (seconds)	-63.9140
FPAP Longitude	0174618.3560E
Delta FPAP Longitude (seconds)	20.9700
Threshold Crossing Height	50.0
TCH Units Selector	0 (feet)
Glidepath Angle (degrees)	3.25
Course Width (metres)	105.00
Length Offset (metres)	0
HAL (metres)	40.0
VAL (metres)	50.0

Output data

Data Block	10 0B 0E 13 05 11 00 00 01 37 31 05 78 B3 0F 1B 14 D3 9F 07 70 15 AC 0C FE D4 A3 00 F4 01 45 01 64 00 C8 FA 4B 53 2B C2
Calculated CRC Value	4B532BC2

Required Additional Data

ICAO Code	ES
LTP/FTP Orthometric Height (metres)	10.8