
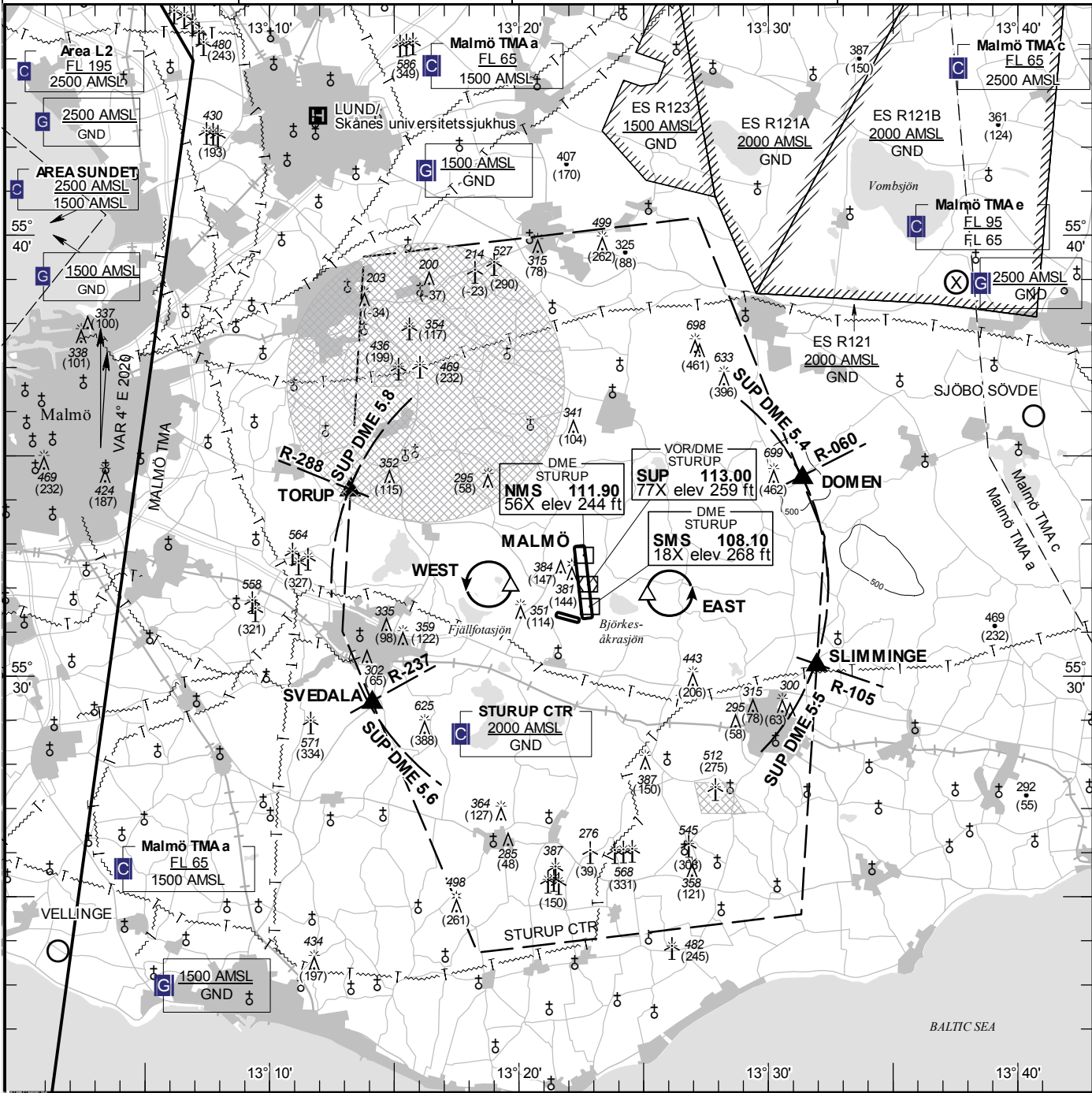


VISUAL APPROACH CHART - ICAO 1:250000 	AD ELEV 237 FEET ELEV and ALT in ft HGT in ft above AD ELEV TA 5000 AMSL	STURUP TOWER 118.805 121.705 STURUP ATIS 129.280	AD 2 ESMS 6-1 MALMÖ SWEDEN
--	---	---	---



Communication failure

Aircraft outside CTR having received no clearance should land at an aerodrome outside CTR and obtain clearance by telephone for further flight to MALMÖ.

If no suitable aerodrome is within reach;

1. SQUAWK 7600
2. Enter CTR via DOMEN or SLIMMINGE to holding EAST at or below 1500 ft AMSL. Transmit blind your intentions.
3. Flash LDG-lights and watch for optical signals from signaling lamp, from the camera installation placed on top of the remote tower (position marked R-TWR on AD Chart) or from local tower.

RWY NR	THR ELEV	PAPI (MEHT)
17	208.8 ft	Left/3.00° (59 ft)
35	236.3 ft	Left/3.00° (60 ft)
11	232 ft	NIL
29	228 ft	NIL

Entry / exit point

DOMEN	553429N 0133122E
SLIMMINGE	553014N 0133156E
SVEDALA	552923N 0131407E
TORUP	553412N 0131314E

Holding

- WEST:** Hold west of the eastern shoreline of lake Fjällfotasjön, west of point 553206N 0131939E
- EAST:** Hold east of lake Björkesåkrasjön, east of point 553149N 0132509E

Legend

See GEN 2.3

Remark

NIL

LFV

CHANGE: ES R121, ES R121A, ES R121B. ES R123 new.

AIRAC AMDT 3/2024 **16 MAY 2024**