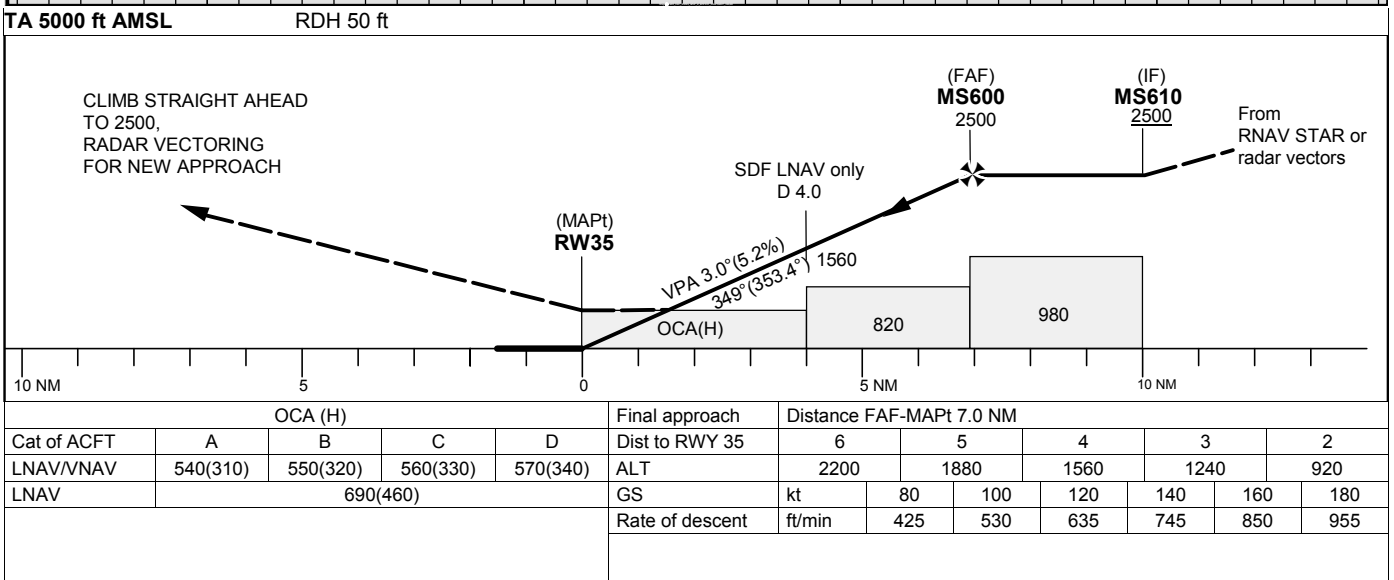
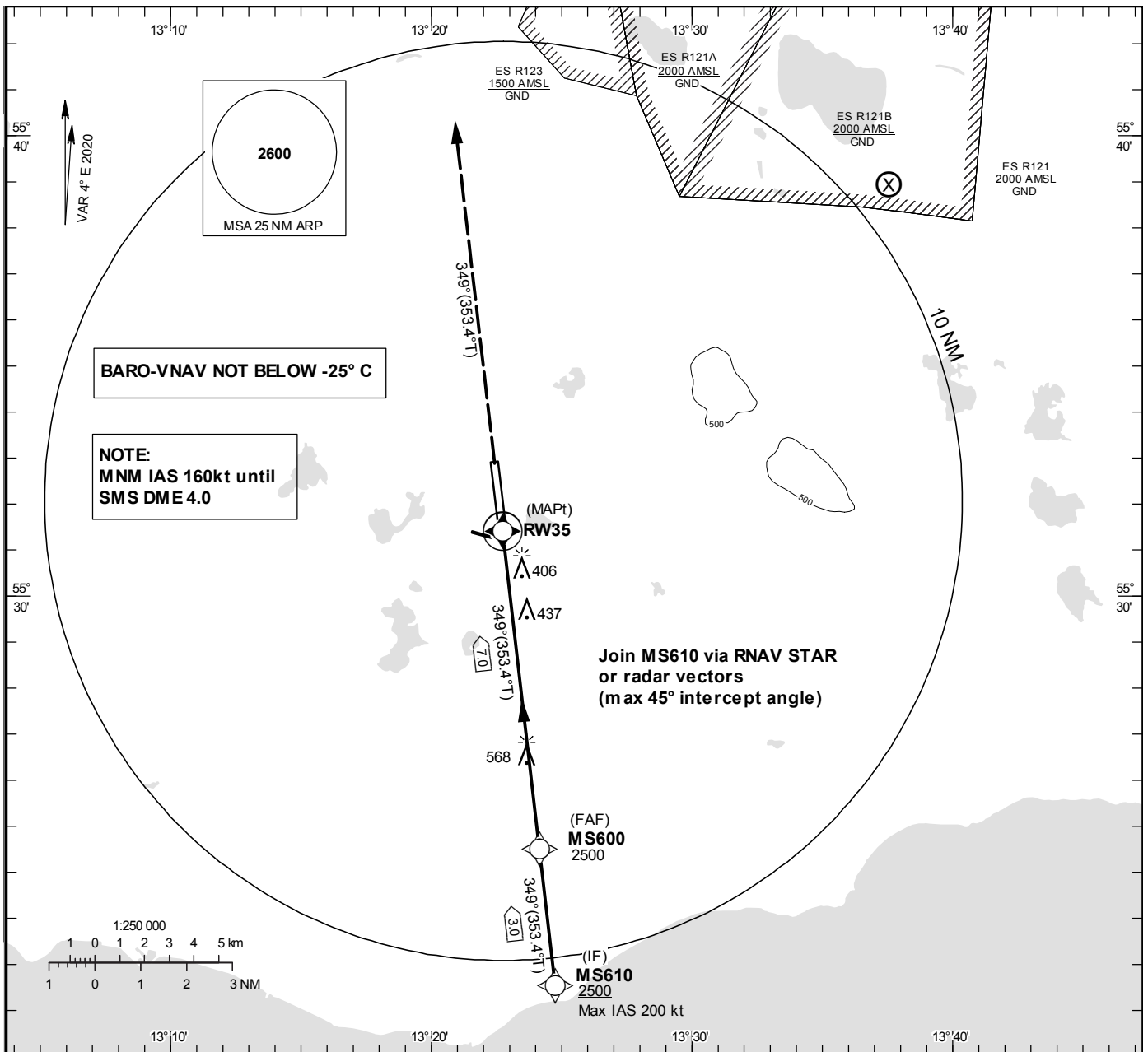


**INSTRUMENT APPROACH CHART – ICAO**  
**THR ELEV 236.3 ft, AD ELEV 237 ft**  
 OCH are related to THR.  
 BRG are MAG (True).  
 ALT, HGT and ELEV in ft.

STURUP TOWER	118.805
SWEDEN CONTROL	134.980
STURUP ATIS	129.280

**RNP z RWY 35**



## RNP z RWY 35 via RNAV STAR or radar vectors

Path Desc	Waypoint Identifier	Fly-over	Course °M(°T)	Dist (NM)	Turn Dir	Altitude	Speed	VPA/RDH	Rec Navaid	Navigation Specification
IF	MS610	-	-	-	-	+2500	-200	-	-	RNP APCH
TF	MS600	-	349°(353.4°)	3.0	-	@2500	-	-	-	RNP APCH
TF	RW35	Y	349°(353.4°)	7.0	-	@286	-	-3.0/50	-	RNP APCH
CA	-	-	349°(353.4°)	-	-	+2500	-	-	-	RNP APCH
VM	-	-	349°	-	-	-	-	-	-	RNP APCH