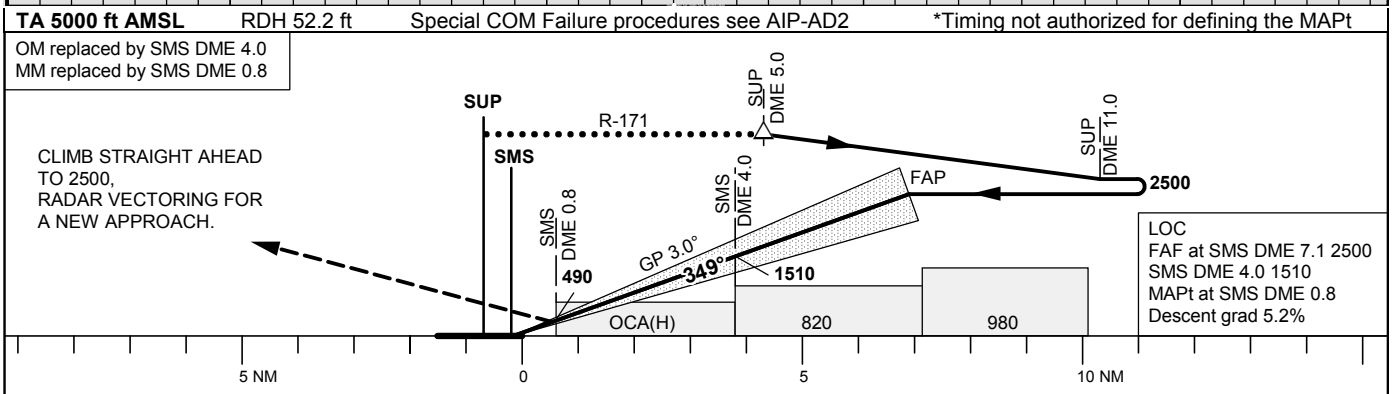
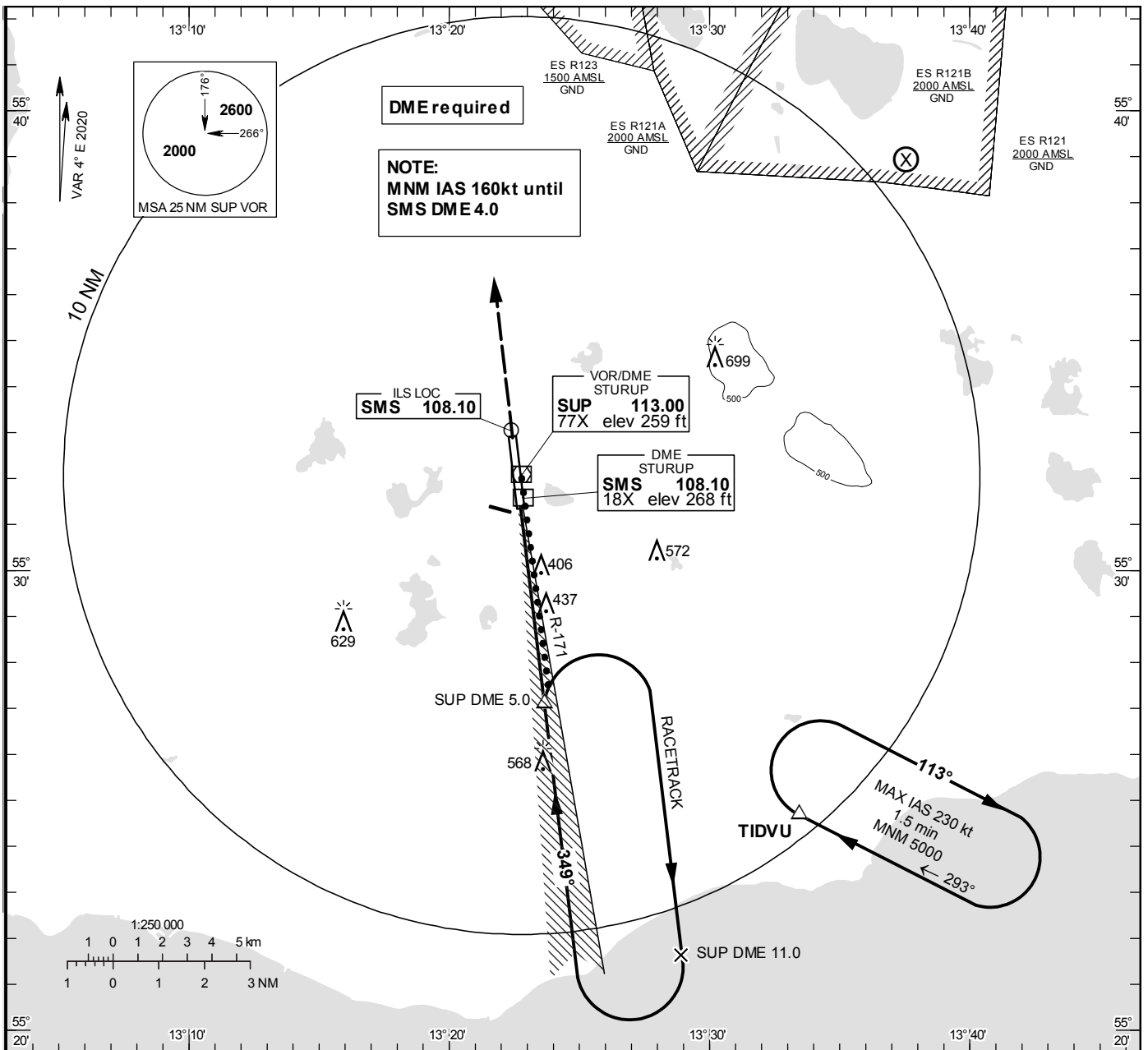


**INSTRUMENT APPROACH CHART – ICAO**

**THR ELEV 236.3 ft, AD ELEV 237 ft**  
 OCH are related to THR.  
 Circling OCH are related to AD ELEV.  
 BRG are MAG  
 ALT, HGT and ELEV in ft.

STURUP TOWER	118.805
SWEDEN CONTROL	134.980
STURUP ATIS	129.280

**ILS or LOC RWY 35**



Cat of ACFT	OCA (H)					Final approach DME SMS NM	LOC Distance FAF-MAPt 6.3 NM*							
	A	B	C	D	D <sub>L</sub>		7	6	5	4	3	2		
Straight-in Approach	CAT I	378(142)	389(153)	405(169)	420(184)	425(189)	2460	2150	1830	1510	1190	870		
	LOC	690 (460)					GS	kt	80	100	120	140	160	180
							Time	min:s	4:45	3:48	3:10	2:43	2:22	2:07
Circling		710 (480)	740 (510)	970(740)	1100(870)	1100(870)	Rate of descent	ft/min	425	535	640	745	850	960