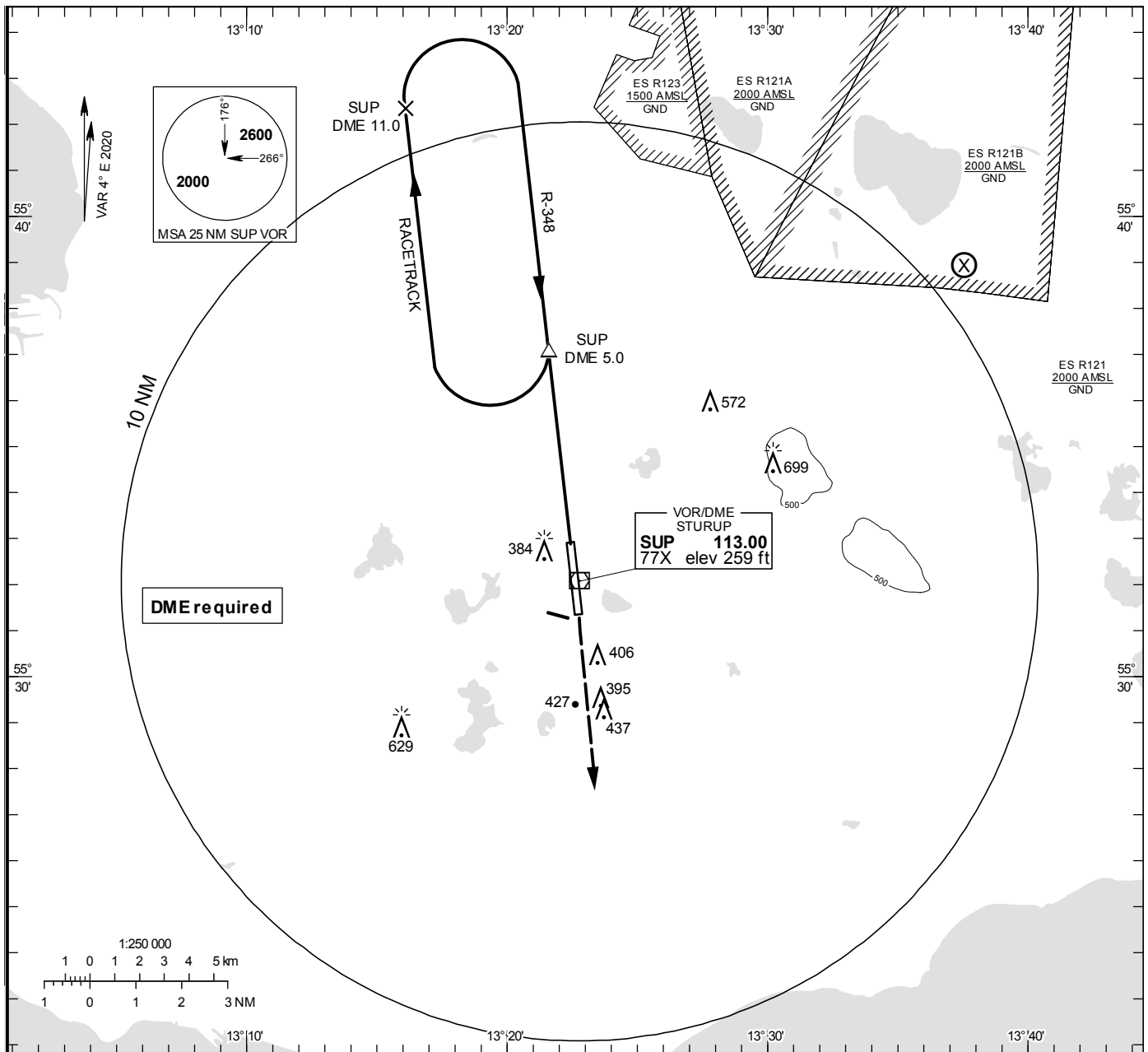


VOR RWY 17

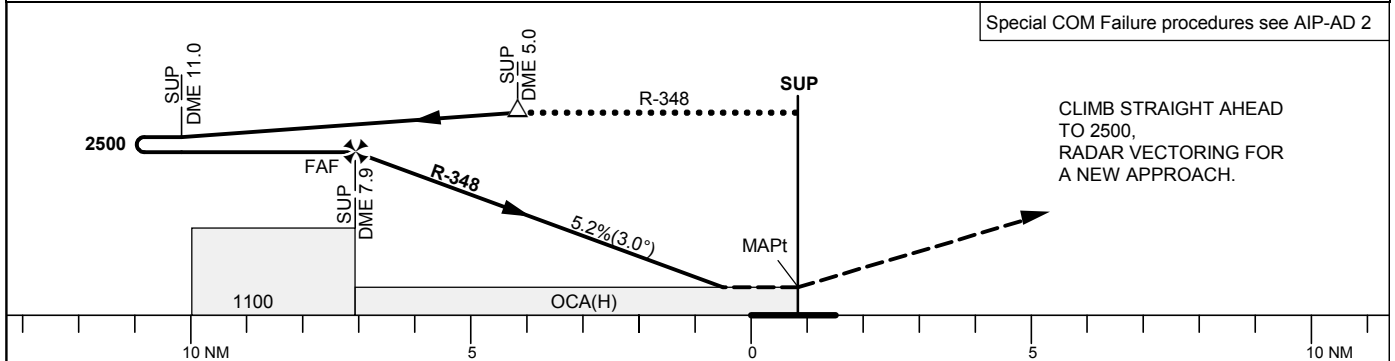
STURUP TOWER	118.805
SWEDEN CONTROL	134.980
STURUP ATIS	129.280

THR ELEV 208.8 ft, AD ELEV 237 ft  
 OCH are related to THR.  
 Circling OCH are related to AD ELEV.  
 BRG are MAG  
 ALT, HGT and ELEV in ft.

INSTRUMENT  
APPROACH  
CHART – ICAO



TA 5000 ft AMSL Final APCH line offset 1° \*Timing not authorized for defining the MAPt



Cat of ACFT	OCA (H)				Final approach							
	A	B	C	D	DME SUP NM	7	6	5	4	3	2	
Straight-in Approach	630 (430)				ALT	2230	1910	1590	1270	950	640	
Circling	710 (480)	740 (510)	970 (740)	1100 (870)	GS	kt	80	100	120	140	160	180
					Time	min:s	5:54	4:43	3:56	3:22	2:57	2:37
					Rate of descent	ft/min	425	535	640	745	850	960