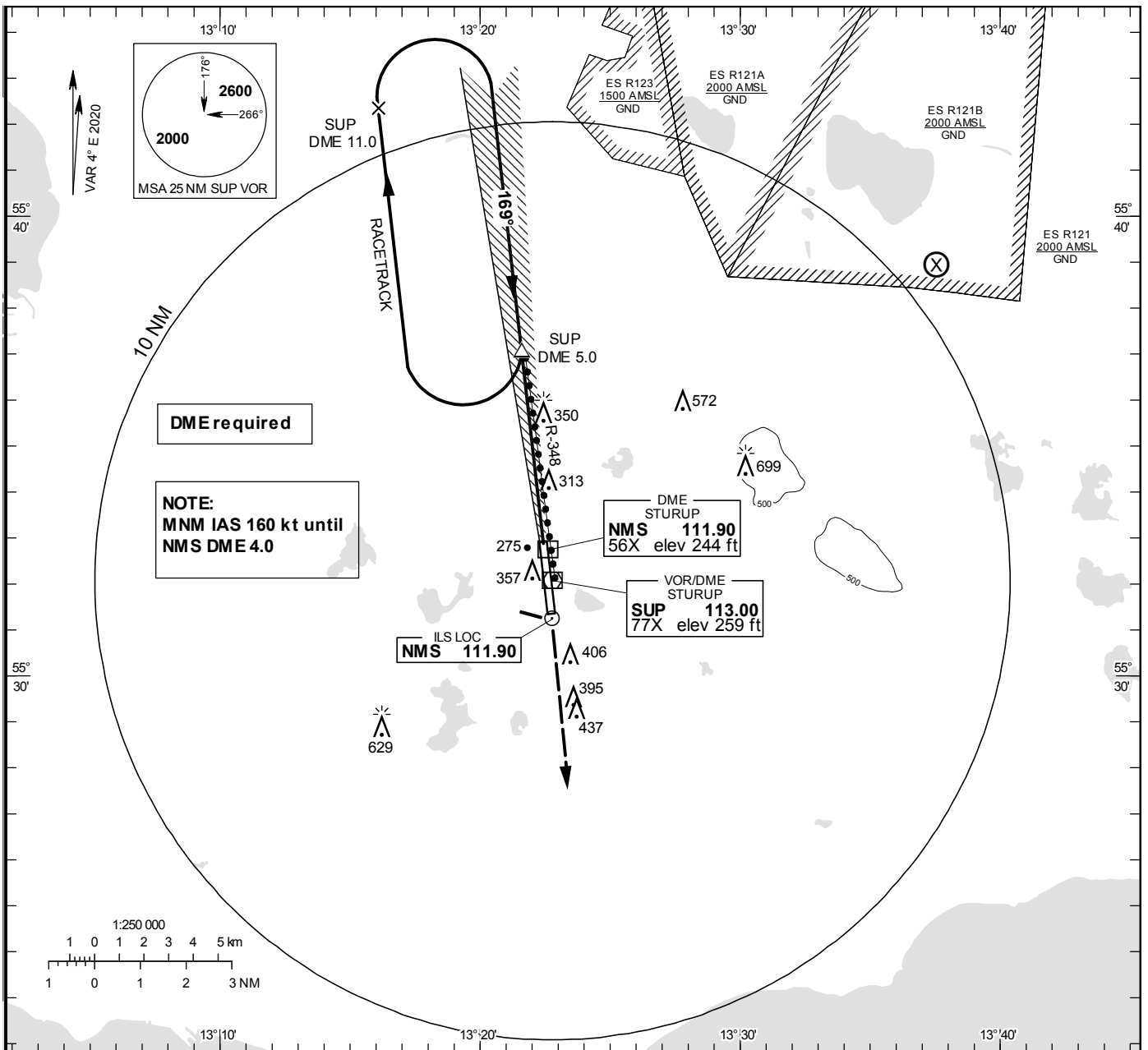


**INSTRUMENT APPROACH CHART – ICAO**

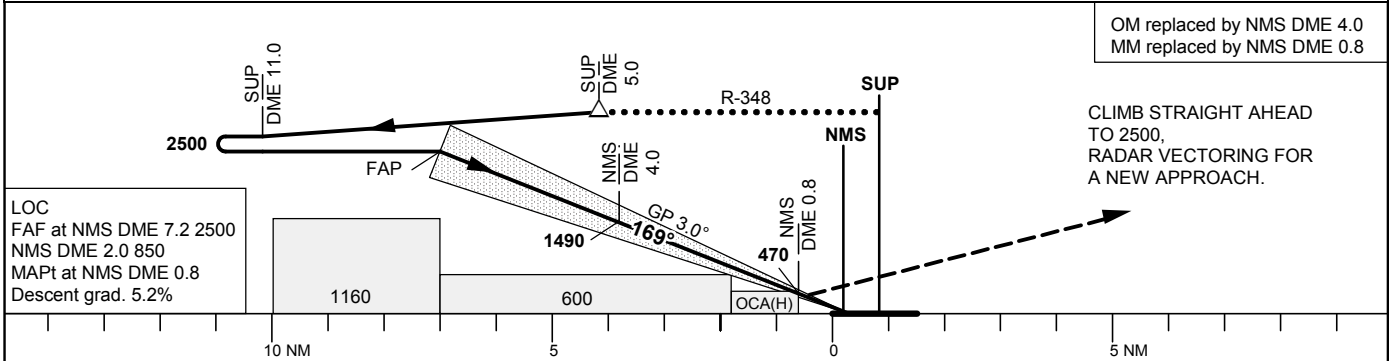
**THR ELEV 208.8 ft, AD ELEV 237 ft**  
 OCH are related to THR.  
 Circling OCH are related to AD ELEV.  
 BRG are MAG  
 ALT. HGT and ELEV in ft.

STURUP TOWER	118.805
SWEDEN CONTROL	134.980
STURUP ATIS	129.280

**ILS or LOC RWY 17**



TA 5000 ft AMSL RDH 57.0 ft Special COM Failure procedures see AIP-AD 2 \*Timing not authorized for defining the MAPt



Cat of ACFT	OCA (H)					Final approach	LOC Distance FAF-MAPt 6.4 NM*							
	A	B	C	D	D <sub>L</sub>		DME NMS NM	7	6	5	4	3	2	
Straight-in Approach	CAT I	351(142)	362(153)	377(168)	392(183)	397(188)	ALT	2440	2120	1810	1490	1170	850	
	CAT II	258(49)	268(59)	282(73)	294(85)	295(86)	GS	kt	80	100	120	140	160	180
	LOC	570(370)					Time	min:s	4:47	3:50	3:11	2:44	2:24	2:08
Circling						Rate of descent	ft/min	425	535	640	745	850	960	
		710(480)	740(510)	970(740)	1100(870)	1100(870)								