

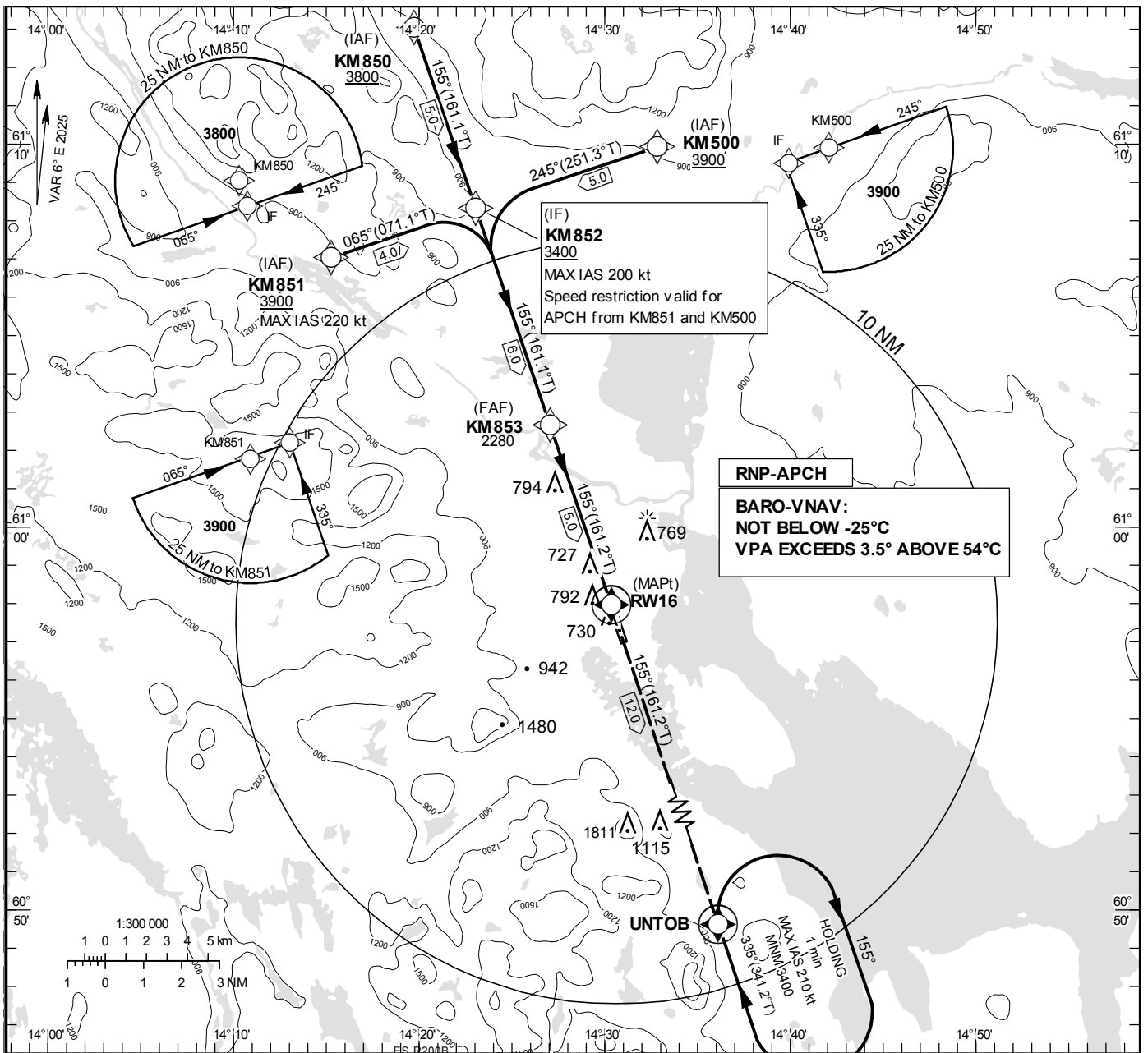
**INSTRUMENT
APPROACH
CHART – ICAO**

THR ELEV 631.2 ft, AD ELEV 635 ft
 OCH are related to THR.
 Circling OCH are related to AD ELEV.
 BRG are MAG (True).
 ALT. HGT and ELEV in ft.

MORA INFORMATION 119.055

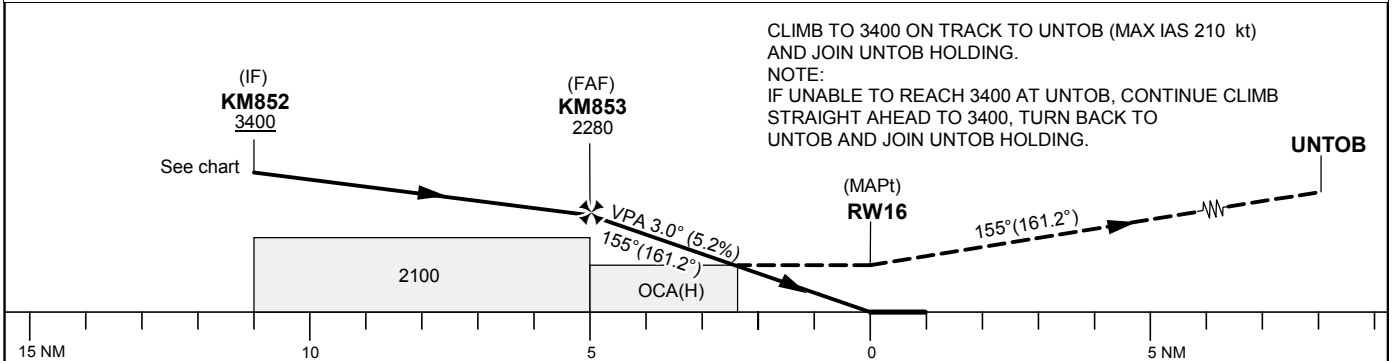
RNP RWY 16

EGNOS Ch 44283 E 16A



TA 5000 ft AMSL RDH 50.0 ft

CLIMB TO 3400 ON TRACK TO UNTOB (MAX IAS 210 kt) AND JOIN UNTOB HOLDING.
 NOTE:
 IF UNABLE TO REACH 3400 AT UNTOB, CONTINUE CLIMB STRAIGHT AHEAD TO 3400, TURN BACK TO UNTOB AND JOIN UNTOB HOLDING.



Cat of ACFT	OCA (H)				Distance FAF-MAPt 5.0 NM							
	A	B	C	D	Dist to RW16 (NM)	5	4	3	2	1		
LPV	860(229)	873(242)	881(250)	891(260)	ALT	2280	1950	1640	1320	1000		
LNAV/VNAV	997(366)	1009(378)	1029(398)	1055(424)	GS	kt	80	100	120	140	160	180
LNAV	1200(570)				Rate of descent	ft/min	425	530	635	745	850	955
Circling	1200(570)	1240(610)	1880(1250)	2210(1580)								
Circling E RWY	1200(570)	1200(570)	1230(600)	1510(880)								

RNP RWY 16 via KM850

Path Desc	Waypoint Identifier	Fly-over	Course °M(°T)	Dist (NM)	Turn Dir	Altitude	Speed	VPA/RDH	Rec Navaid	Navigation Specification
IF	KM850	-	-	-	-	+3800	-	-	-	RNP APCH
TF	KM852	-	155°(161.1°)	5.0	-	+3400	-	-	-	RNP APCH

RNP RWY 16 via KM851

Path Desc	Waypoint Identifier	Fly-over	Course °M(°T)	Dist (NM)	Turn Dir	Altitude	Speed	VPA/RDH	Rec Navaid	Navigation Specification
IF	KM851	-	-	-	-	+3900	-220	-	-	RNP APCH
TF	KM852	-	065°(071.1°)	4.0	-	+3400	-200	-	-	RNP APCH

RNP RWY 16 via KM500

Path Desc	Waypoint Identifier	Fly-over	Course °M(°T)	Dist (NM)	Turn Dir	Altitude	Speed	VPA/RDH	Rec Navaid	Navigation Specification
IF	KM500	-	-	-	-	+3900	-	-	-	RNP APCH
TF	KM852	-	245°(251.3°)	5.0	-	+3400	-200	-	-	RNP APCH

Path Desc	Waypoint Identifier	Fly-over	Course °M(°T)	Dist (NM)	Turn Dir	Altitude	Speed	VPA/RDH	Rec Navaid	Navigation Specification
IF	KM852	-	-	-	-	+3400	-	-	-	RNP APCH
TF	KM853	-	155°(161.1°)	6.0	-	+2280	-	-	-	RNP APCH
TF	RW16	Y	155°(161.2°)	5.0	-	@681	-	-3.0/50	-	RNP APCH
TF	UNTOB	Y	155°(161.2°)	12.0	-	-	-210	-	-	RNP APCH

Path Desc	Waypoint Identifier	Fly-over	Course °M(°T)	Dist (NM)	Turn Dir	Altitude	Speed	VPA/RDH	Rec Navaid	Navigation Specification
HM	UNTOB	Y	335°(341.2°)	-	R	+3400	-210	-	-	RNAV 1

FAS Data Block

RNP RWY 16

Input data

Operation Type	0
SBAS Provider	1 (EGNOS)
Airport Identifier	ESKM
Runway	16
Runway Letter	0 (None)
Approach Performance Designator	0
Route Indicator	
ReferencePath Data Selector	0
ReferencePath Identifier	E16A
LTP/FTP Latitude	605756.2105N
LTP/FTP Longitude	0143021.5680E
LTP/FTP Ellipsoidal Height (metres)	223.5
FPAP Latitude	605700.7165N
Delta FPAP Latitude (seconds)	-55.4940
FPAP Longitude	0143100.3705E
Delta FPAP Longitude (seconds)	38.8025
Threshold Crossing Height	50.0
TCH Units Selector	0 (feet)
Glidepath Angle (degrees)	3.00
Course Width (metres)	105.00
Length Offset (metres)	0
HAL (metres)	40.0
VAL (metres)	50.0

Output data

Data Block	10 0D 0B 13 05 10 00 00 01 36 31 05 E5 E1 29 1A 00 AD 39 06 BB 1C 74 4E FE 25 2F 01 F4 01 2C 01 64 00 C8 FA 2A 1F 72 C3
Calculated CRC Value	2A1F72C3

Required Additional Data

ICAO Code	ES
LTP/FTP Orthometric Height (metres)	192.4