
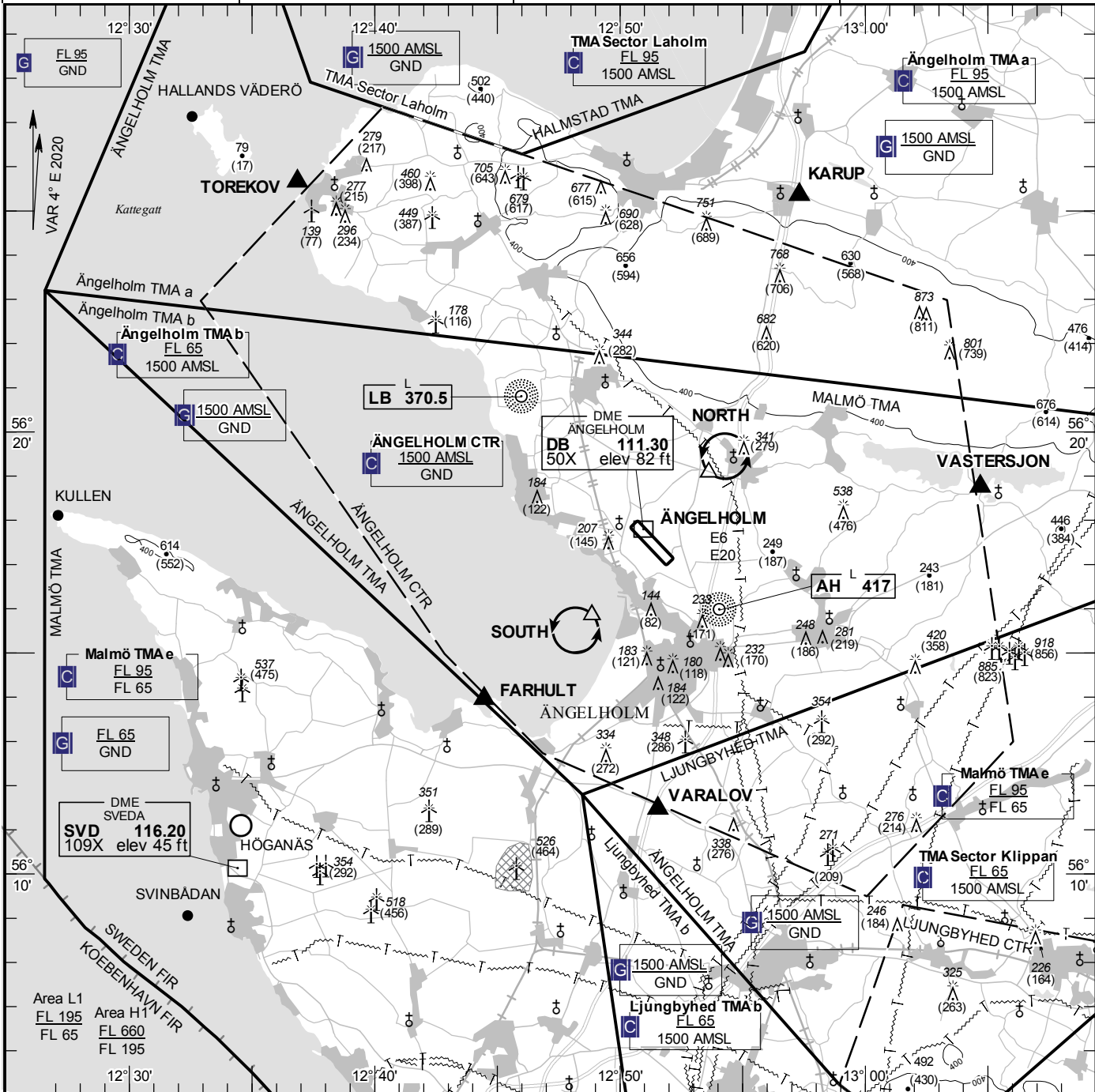


VISUAL APPROACH CHART - ICAO 1:250000 	AD ELEV 62 FEET ELEV and ALT in ft HGT in ft above AD ELEV TA 5000 AMSL	ÄNGELHOLM TOWER 127.105 ÄNGELHOLM APPROACH 132.455	AD 2 ESTA 6-1 ÄNGELHOLM SWEDEN
--	--	---	---



Communication failure

- 1 SQUAWK 7600
- 2 Enter CTR via FARHULT – Holding SOUTH at or below 1500 ft AMSL to traffic circuit. Transmit blind your intentions.
- 3 Flash LDG-lights and watch TWR for optical signals.

RWY NR	THR ELEV	PAPI (MEHT)
14	60.2 ft	Left/3.00° (37 ft)
32	52 ft	Left/3.00° (54 ft)

Entry / exit point

TOREKOV	562539N 0123651E
KARUP	562521N 0125719E
VASTERSJON	561845N 0130441E
VARALOV	561128N 0125133E
FARHULT	561357N 0124428E

Remark

Right hand traffic circuit when RWY 32 is in use.

Sector LAHOLM and sector KLIPPAN:
ATC provider, see ENR 2.1

Legend
See GEN 2.3

Holding

- NORTH:** Hold at Hjärnarp church, north east of point 561903N 0125338E
- SOUTH:** Hold west camping ground, south west of point 561550N 0124851E