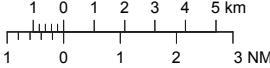
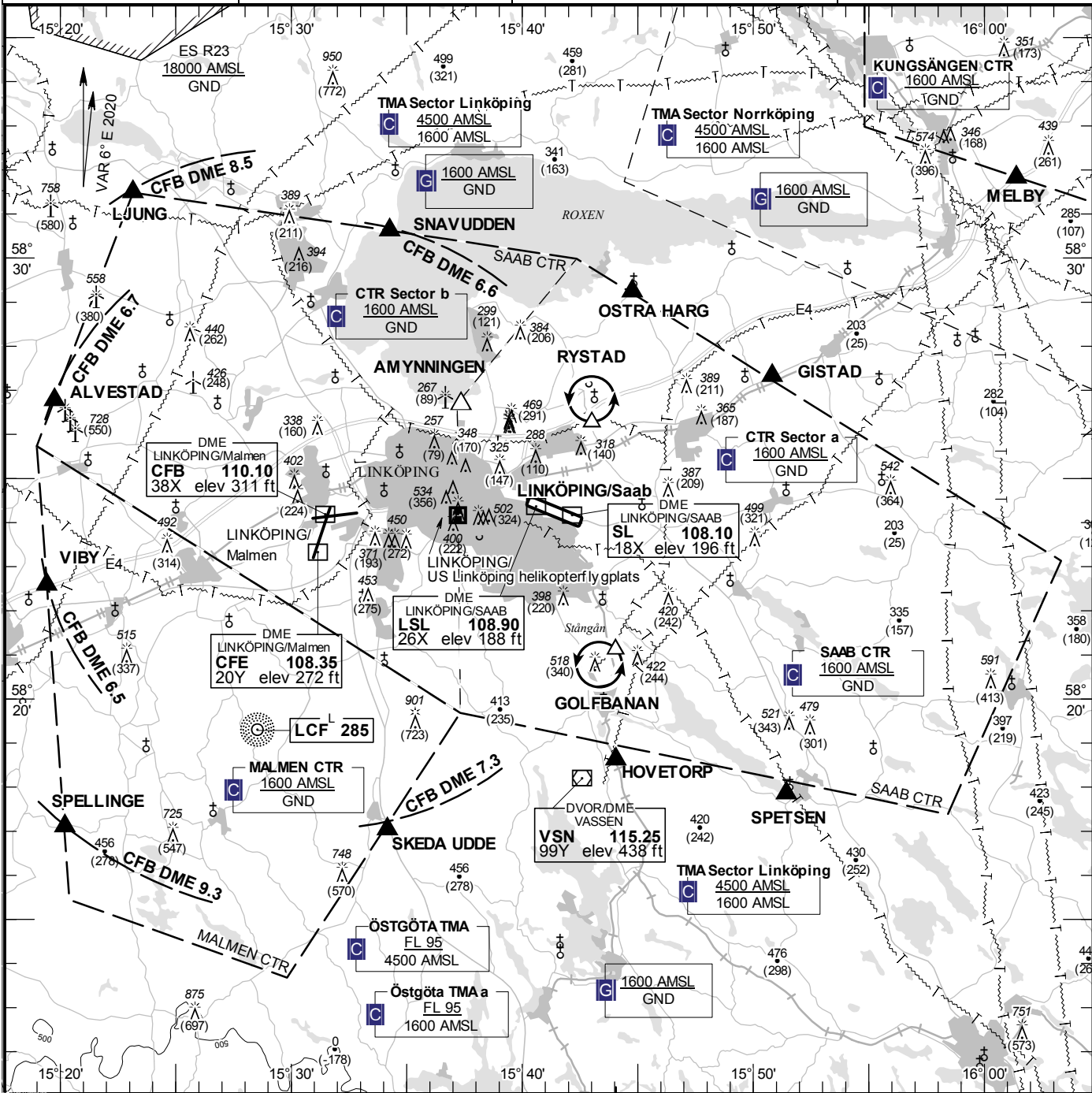


<b>VISUAL APPROACH CHART – ICAO</b> 1:250000 	<b>AD ELEV 178 FEET</b> ELEV and ALT in ft HGT in ft above AD ELEV <b>TA 5000 AMSL</b>	<b>SAAB TOWER 118.805</b> <b>133.105</b> <b>ÖSTGÖTA APPROACH 132.955</b>	<b>AD 2 ESSL 6-1</b> <b>LINKÖPING/Saab SWEDEN</b>
--	---	--	--



**Communication failure**

- 1 SQUAWK 7600
- 2 Contact TWR on TEL +46 (0)60 64 62 12 for clearance.
- 3 If telephone contact cannot be established, enter CTR via OSTRÄ HARG or GISTAD to holding RYSTAD.
- 4 Hold in RYSTAD 5 min and flash with landing lights and wait for optical signals from R-TWR.
- 5 If optical signals cannot be perceived, start APCH via overhead to RWY of choice.
- 6 Confirm RWY free.
- 7 Land and taxi via TWY L to GAC Apron.

RWY NR	THR ELEV	PAPI (MEHT)
11	156.9 ft	Left/3.00° (58 ft)
29	177.9 ft	Left/3.00° (59 ft)

**Legend**  
See GEN 2.3

**Remark**  
During the operational hours of MALMEN TWR; SAAB CTR sector B delegated to MALMEN TWR. Right hand traffic circuit when RWY 29 is in use.

**Entry / exit point**

LJUNG	583129N 0152309E
SNAVUDDEN	583037N 0153416E
OSTRÄ HARG	582914N 0154446E
GISTAD	582719N 0155049E
SPETSEN	581751N 0155126E
HOVETORP	581837N 0154403E
ALVESTAD	582646N 0151945E

**Reporting point**

AMYNNINGEN 582640N 0153721E

**Holding**

RYSTAD: Hold over Rystad church, north of point 582620N 0154300E  
 GOLFBANAN: Hold west of Stångån over the golf course, south west of point 582111N 0154402E