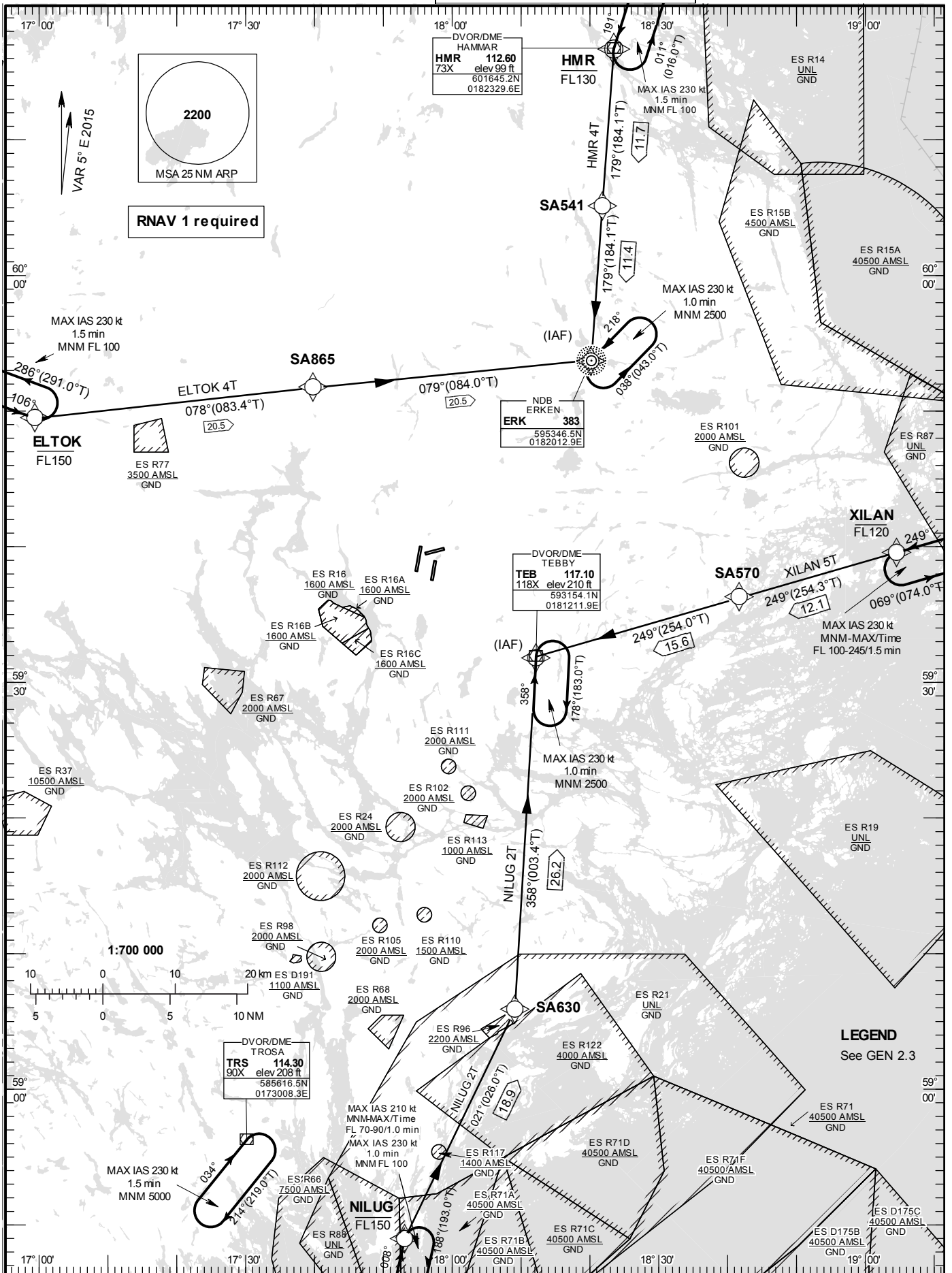


**.STANDARD INSTRUMENT
ARRIVAL CHART (STAR) -
ICAO**

HGT and ALT in ft
BRG are MAG (True)
TA 5000 ft AMSL

ARLANDA TOWER	118.505
ARLANDA ATIS ARR	119.005
STOCKHOLM APPROACH	123.755

**RNAV (DME/DME or GNSS)
STAR RWY 26**



LEGEND
See GEN 2.3

Prescribed Coding of RNAV STAR for RWY 26

REMARK

Aircraft to STOCKHOLM/Arlanda shall not be operated at an airspeed of more than 250 kt IAS below FL100 unless otherwise instructed.

Clearance limit is normally the IAF.

From IAF aircraft will be radar vectored to final approach.

In case of radio communication failure, see AD 2.22 para 3.

All RNAV STARs are based on GNSS or DME/DME for position update.

ELTOK 4T

Path Term	Waypoint Identifier	Fly-over	Course °M(°T)	Dist (NM)	Turn Dir	Rest Alts (ft AMSL)	Speed Limits (kt)	VPA/RDH (°/ft)	Rec Navaid	Navigation Specification
IF	ELTOK	-	-	-	-	-FL150	-	-	-	RNAV1
TF	SA865	-	078°(083.4°)	20.5	-	-	-	-	-	RNAV1
TF	ERK	-	079°(084.0°)	20.5	-	-	-	-	-	RNAV1

STAR instruction: ELTOK (FL150 or below) – SA865 – ERK

HMR 4T

Path Term	Waypoint Identifier	Fly-over	Course °M(°T)	Dist (NM)	Turn Dir	Rest Alts (ft AMSL)	Speed Limits (kt)	VPA/RDH (°/ft)	Rec Navaid	Navigation Specification
IF	HMR	-	-	-	-	-FL130	-	-	-	RNAV1
TF	SA541	-	179°(184.1°)	11.7	-	-	-	-	-	RNAV1
TF	ERK	-	179°(184.1°)	11.4	-	-	-	-	-	RNAV1

STAR instruction: HMR (FL130 or below) – SA541 – ERK

NILUG 2T

Path Term	Waypoint Identifier	Fly-over	Course °M(°T)	Dist (NM)	Turn Dir	Rest Alts (ft AMSL)	Speed Limits (kt)	VPA/RDH (°/ft)	Rec Navaid	Navigation Specification
IF	NILUG	-	-	-	-	-FL150	-	-	-	RNAV1
TF	SA630	-	021°(026.0°)	18.9	-	-	-	-	-	RNAV1
TF	TEB	-	358°(003.4°)	26.2	-	-	-	-	-	RNAV1

STAR instruction: NILUG (FL150 or below) – SA630 – TEB

XILAN 5T

Path Term	Waypoint Identifier	Fly-over	Course °M(°T)	Dist (NM)	Turn Dir	Rest Alts (ft AMSL)	Speed Limits (kt)	VPA/RDH (°/ft)	Rec Navaid	Navigation Specification
IF	XILAN	-	-	-	-	-FL120	-	-	-	RNAV1
TF	SA570	-	249°(254.3°)	12.1	-	-	-	-	-	RNAV1
TF	TEB	-	249°(254.0°)	15.6	-	-	-	-	-	RNAV1

STAR instruction: XILAN (FL120 or below) – SA570 – TEB