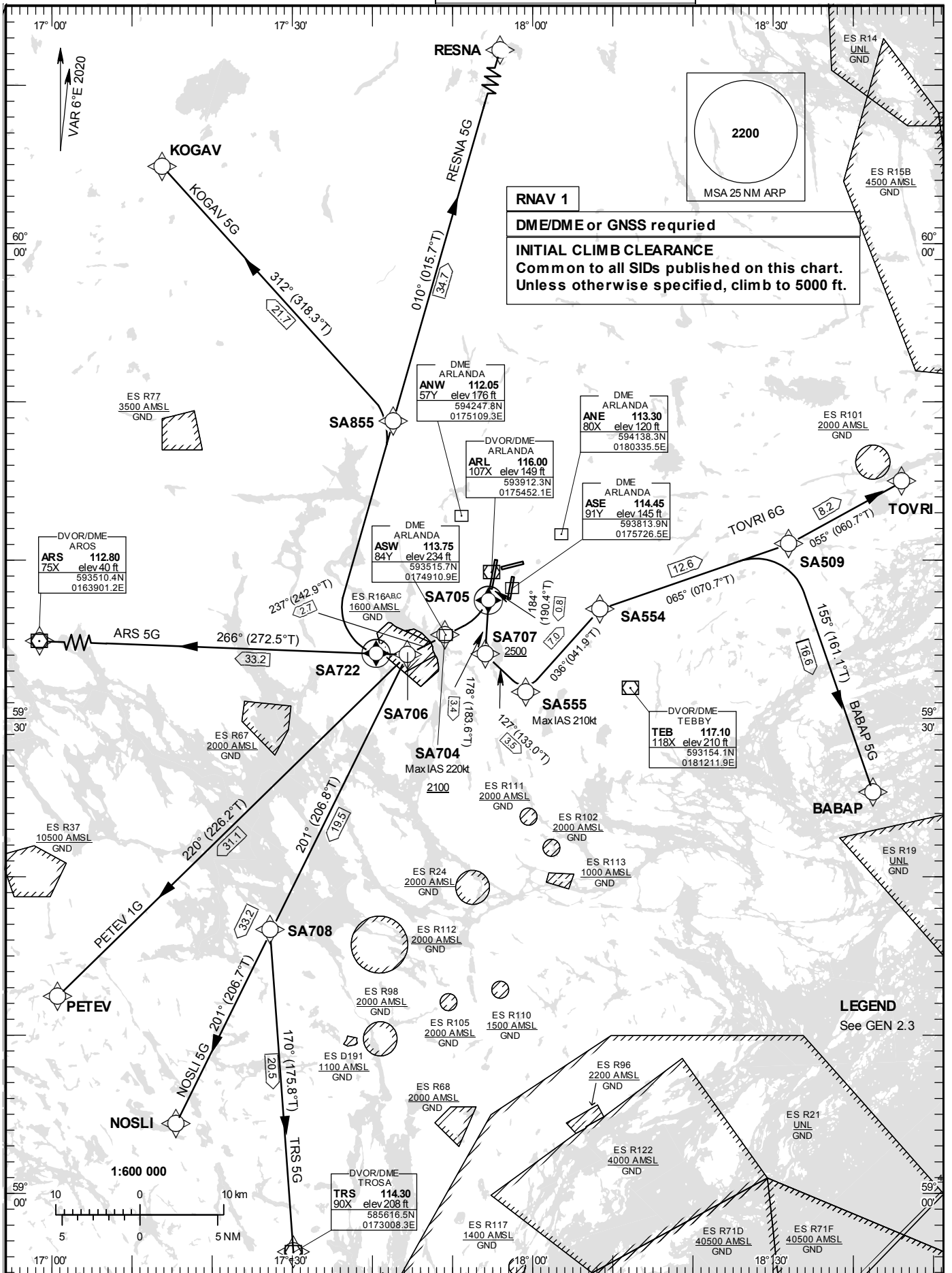


STANDARD INSTRUMENT
DEPARTURE CHART (SID) -
ICAO

HGT and ALT in ft
BRG are MAG (True)
TA 5000 ft AMSL

ARLANDA TOWER	118.505
ARLANDA ATIS DEP	121.630
STOCKHOLM APPROACH	123.755

RNAV RWY 19R
ARS5G, BABAP5G, KOGAV5G,
NOSLI5G, PETEV1G, RESNA5G,
TOVRI6G, TRS1G



Prescribed Coding of RNAV SID for RWY 19R**Notes:**

INITIAL CLIMB CLEARANCE: Climb to 5000 ft unless otherwise specified. Common to all SIDs published on charts.

Aircraft proceeding on RNAV SID shall use 400 ft/NM (6.6%) as a minimum gradient of climb up to 5000 ft AMSL.
Aircraft unable to conform with this procedure shall inform ATC accordingly.

Aircraft from STOCKHOLM/Arlanda shall not be operated at an airspeed of more than 250 kt IAS below FL 100 unless otherwise instructed.

Contact Frequency: Contact STOCKHOLM DEPARTURE, when so instructed by TWR, on channel indicated below.

ARS 5G

Path Term	Waypoint Identifier	Fly-over	Course °M(°T)	Dist (NM)	Turn Dir	Rest Alts (ft AMSL)	Speed Limits (kt)	VPA/RDH (°/ft)	Rec Navaid	Navigation Specification
CF	SA705	Y	184°(190.4°)	0.8	-	-	-	-	ARL	RNAV 1
DF	SA704	-	-	-	R	+2100	-220	-	-	RNAV 1
TF	SA706	-	237° (242.9°)	2.7	-	-	-	-	-	RNAV 1
TF	ARS	-	266° (272.5°)	33.2	-	-	-	-	-	RNAV 1

SID instruction: Climb on track 184° to SA705 – SA704 (MNM 2100 ft, max IAS 220 kt) – SA706 – ARS **124.105 MHz**
(MNM climb gradient 7.6% (460 ft/NM) until SA704)

ACFT unable to follow RNAV SID: Report "unable RNAV SID due RNAV type" to Clearance Delivery and "unable RNAV SID" to Stockholm Departure at first contact.
Climb on track 184° to ARL DME 2. Turn right to track 239° (max IAS 220 kt in turn) and continue climb to MNM 2100 ft at ARL DME 5.0 Expect radar vectors to ARS.
(MNM climb gradient 7.6% (460 ft/NM) until ARL DME 5.0)

BABAP 5G

Path Term	Waypoint Identifier	Fly-over	Course °M(°T)	Dist (NM)	Turn Dir	Rest Alts (ft AMSL)	Speed Limits (kt)	VPA/RDH (°/ft)	Rec Navaid	Navigation Specification
CF	SA705	Y	184°(190.4°)	0.8	-	-	-	-	ARL	RNAV 1
TF	SA707	-	178°(183.6°)	3.4	-	+2500	-	-	-	RNAV 1
TF	SA555	-	127°(133.0°)	3.5	-	-	-210	-	-	RNAV1
TF	SA554	-	036°(041.9°)	7.0	L	-	-	-	-	RNAV 1
TF	SA509	-	065°(070.7°)	12.6	-	-	-	-	-	RNAV 1
TF	BABAP	-	155°(161.1°)	16.6	R	-	-	-	-	RNAV 1

SID instruction: Climb to SA705 on course 184°. Turn left on course 178° to SA707. Turn left to SA555 (max IAS 210 kt) – SA554 – SA509 – BABAP. **130.330 MHz**

MNM climb gradient 13.3% (810 ft/NM) until SA707, due to separation criteria.

Note: If unable 2500 ft before turn at SA707, continue on track 178° and inform ATC.

MNM climb gradient 4.8% (295 ft/NM) until SA707, due to obstacles.

ACFT unable to follow RNAV SID: Report "unable RNAV SID due RNAV type" to Clearance Delivery and "unable RNAV SID" to Stockholm Departure at first contact. Climb on track 184° to ARL DME 2. Turn left to track 178° to ARL DME 5.2. At or above 2500 ft turn left to track 127°(max IAS 210 kt). Expect radar vectors to BABAP.

KOGAV 5G

Path Term	Waypoint Identifier	Fly-over	Course °M(°T)	Dist (NM)	Turn Dir	Rest Alts (ft AMSL)	Speed Limits (kt)	VPA/RDH (°/ft)	Rec Navaid	Navigation Specification
CF	SA705	Y	184°(190.4°)	0.8	-	-	-	-	ARL	RNAV 1
DF	SA704	-	-	-	R	+2100	-220	-	-	RNAV 1
TF	SA706	-	237°(242.9°)	2.7	-	-	-	-	-	RNAV 1
CF	SA722	Y	266°(271.7°)	2.0	-	-	-	-	ARL	RNAV 1
DF	SA855	-	-	-	R	-	-	-	-	RNAV 1
TF	KOGAV	-	312°(318.3°)	21.7	L	-	-	-	-	RNAV 1

SID instruction: Climb on track 184° to SA705 – SA704 (MNM 2100 ft, max IAS 220 kt) – SA706 – SA722 – SA855– KOGAV (MNM climb gradient 7.6% (460 ft/NM) until SA704) **124.105 MHz**

ACFT unable to follow RNAV SID: Report "unable RNAV SID due RNAV type" to Clearance Delivery and "unable RNAV SID" to Stockholm Departure at first contact.
Climb on track 184° to ARL DME 2. Turn right to track 239° (max IAS 220 kt in turn) and continue climb to MNM 2100 ft at ARL DME 5.0. Expect radar vectors to KOGAV. (MNM climb gradient 7.6% (460 ft/NM) until ARL DME 5.0)

NOSLI 5G

Path Term	Waypoint Identifier	Fly-over	Course °M(°T)	Dist (NM)	Turn Dir	Rest Alts (ft AMSL)	Speed Limits (kt)	VPA/RDH (°/ft)	Rec Navaid	Navigation Specification
CF	SA705	Y	184°(190.4°)	0.8	-	-	-	-	ARL	RNAV 1
DF	SA704	-	-	-	R	+2100	-220	-	-	RNAV 1
TF	SA706	-	237°(242.9°)	2.7	-	-	-	-	-	RNAV 1
TF	NOSLI	-	201°(206.7°)	33.2	-	-	-	-	-	RNAV 1

SID instruction: Climb on track 184° to SA705 – SA704 (MNM 2100 ft, max IAS 220 kt) – SA706 – NOSLI (MNM climb gradient 7.6% (460 ft/NM) until SA704) **124.105 MHz**

ACFT unable to follow RNAV SID: Report "unable RNAV SID due RNAV type" to Clearance Delivery and "unable RNAV SID" to Stockholm Departure at first contact.
Climb on track 184° to ARL DME 2. Turn right to track 239° (max IAS 220 kt in turn) and continue climb to MNM 2100 ft at ARL DME 5.0. Expect radar vectors to NOSLI. (MNM climb gradient 7.6% (460 ft/NM) until ARL DME 5.0)

PETEV 1G

Path Term	Waypoint Identifier	Fly-over	Course °M(°T)	Dist (NM)	Turn Dir	Rest Alts (ft AMSL)	Speed Limits (kt)	VPA/RDH (°/ft)	Rec Navaid	Navigation Specification
CF	SA705	Y	184°(190.4°)	0.8	-	-	-	-	ARL	RNAV 1
DF	SA704	-	-	-	R	+2100	-220	-	-	RNAV 1
TF	SA706	-	237°(242.9°)	2.7	-	-	-	-	-	RNAV 1
TF	PETEV	-	220°(226.2°)	31.1	-	-	-	-	-	RNAV 1

SID instruction: Climb on track 184° to SA705 – SA704 (MNM 2100 ft, max IAS 220 kt) – SA706 – PETEV (MNM climb gradient 7.6% (460 ft/NM) until SA704) **124.105 MHz**

ACFT unable to follow RNAV SID: Report "unable RNAV SID due RNAV type" to Clearance Delivery and "unable RNAV SID" to Stockholm Departure at first contact.
Climb on track 184° to ARL DME 2. Turn right to track 239° (max IAS 220 kt in turn) and continue climb to MNM 2100 ft at ARL DME 5.0. Expect radar vectors to PETEV. (MNM climb gradient 7.6% (460 ft/NM) until ARL DME 5.0)

RESNA 5G

Path Term	Waypoint Identifier	Fly-over	Course °M(°T)	Dist (NM)	Turn Dir	Rest Alts (ft AMSL)	Speed Limits (kt)	VPA/ RDH (°/ft)	Rec Navaid	Navigation Specification
CF	SA705	Y	184°(190.4°)	0.8	-	-	-	-	ARL	RNAV 1
DF	SA704	-	-	-	R	+2100	-220	-	-	RNAV 1
TF	SA706	-	237°(242.9°)	2.7	-	-	-	-	-	RNAV 1
CF	SA722	Y	266°(271.7°)	2.0	-	-	-	-	ARL	RNAV 1
DF	SA855	-	-	-	R	-	-	-	-	RNAV 1
TF	RESNA	-	010°(015.7°)	34.7	-	-	-	-	-	RNAV 1

SID instruction: Climb on track 184° to SA705 – SA704 (MNM 2100 ft, max IAS 220 kt) – SA706 – SA722 – SA855 – RESNA (MNM climb gradient 7.6% (460 ft/NM) until SA704) **124.105 MHz**

ACFT unable to follow RNAV SID: Report "unable RNAV SID due RNAV type" to Clearance Delivery and "unable RNAV SID" to Stockholm Departure at first contact.
Climb on track 184° to ARL DME 2. Turn right to track 239° (max IAS 220 kt in turn) and continue climb to MNM 2100 ft at ARL DME 5.0. Expect radar vectors to RESNA. (MNM climb gradient 7.6% (460 ft/NM) until ARL DME 5.0)

TOVRI 6G

Path Term	Waypoint Identifier	Fly-over	Course °M(°T)	Dist (NM)	Turn Dir	Rest Alts (ft AMSL)	Speed Limits (kt)	VPA/ RDH (°/ft)	Rec Navaid	Navigation Specification
CF	SA705	Y	184°(190.4°)	0.8	-	-	-	-	ARL	RNAV 1
TF	SA707	-	178°(183.6°)	3.4	-	+2500	-	-	-	RNAV 1
TF	SA555	-	127°(133.0°)	3.5	-	-	-210	-	-	RNAV1
TF	SA554	-	036°(041.9°)	7.0	L	-	-	-	-	RNAV 1
TF	SA509	-	065°(070.7°)	12.6	-	-	-	-	-	RNAV1
TF	TOVRI	-	055°(060.7°)	8.2	-	-	-	-	-	RNAV 1

SID instruction: Climb to SA705 on course 184°. Turn left on course 178° to SA707. Turn left to SA555 (max IAS 210 kt) – SA554 – SA509 – TOVRI. **130.330 MHz**

MNM climb gradient 13.3% (810 ft/NM) until SA707, due to separation criteria.

Note: If unable 2500 ft before turn at SA707, continue on track 178° and inform ATC.

MNM climb gradient 4.8% (295 ft/NM) until SA707, due to obstacles.

ACFT unable to follow RNAV SID: Report "unable RNAV SID due RNAV type" to Clearance Delivery and "unable RNAV SID" to Stockholm Departure at first contact. Climb on track 184° to ARL DME 2. Turn left to track 178° to ARL DME 5.2. At or above 2500 ft turn left to track 127°(max IAS 210 kt). Expect radar vectors to TOVRI.

TRS 5G

Path Term	Waypoint Identifier	Fly-over	Course °M(°T)	Dist (NM)	Turn Dir	Rest Alts (ft AMSL)	Speed Limits (kt)	VPA/ RDH (°/ft)	Rec Navaid	Navigation Specification
CF	SA705	Y	184°(190.4°)	0.8	-	-	-	-	ARL	RNAV 1
DF	SA704	-	-	-	R	+2100	-220	-	-	RNAV 1
TF	SA706	-	237°(242.9°)	2.7	-	-	-	-	-	RNAV 1
TF	SA708	-	201°(206.8°)	19.5	-	-	-	-	-	RNAV 1
TF	TRS	-	170°(175.8°)	20.5	-	-	-	-	-	RNAV 1

SID instruction: Climb on track 184° to SA705 – SA704 (MNM 2100 ft, max IAS 220 kt) – SA706 – SA708 - TRS (MNM climb gradient 7.6% (460 ft/NM) until SA704) **124.105 MHz**

ACFT unable to follow RNAV SID: Report "unable RNAV SID due RNAV type" to Clearance Delivery and "unable RNAV SID" to Stockholm Departure at first contact.
Climb on track 184° to ARL DME 2. Turn right to track 239° (max IAS 220 kt in turn) and continue climb to MNM 2100 ft at ARL DME 5.0. Expect radar vectors to TRS. (MNM climb gradient 7.6% (460 ft/NM) until ARL DME 5.0)